



Illinois Environmental Protection Agency

1021 North Grand Avenue East • P.O. Box 19276 • Springfield • Illinois • 62794-9276 • (217) 782-3397

Notice of Intent for New or Renewal of General Permit for Discharges from Small Municipal Separate Storm Sewer Systems (MS4's)

Part I. Municipal (MS4) Contact Information

1. Name of Municipality: City of Sycamore MS4 #: ILR400552
Population (based on 2010 census): 17519
2. MS4 Mailing Address: 475 N Cross St City: Sycamore, IL Zip: 60178
3. Primary MS4 Contact Person (Authorized Representative for MS4 Permit)
Name: Mark Bushnell Title: City Engineer
Phone: (815) 895-4557 Email Address: mbushnell@cityofsycamore.com

General Information

4. Latitude and Longitude at approximate geographical center of MS4 for which you are requesting authorization to discharge:
Latitude: 41 59 19 Longitude: 88 41 04
Degrees Minutes Seconds Degrees Minutes Seconds
5. Community Type: City Other: _____
6. Name(s) of governmental entity(ies) in which MS4 is located:
- | City/Village | Township | County |
|--------------|----------|--------|
| Sycamore | Sycamore | DeKalb |
| | DeKalb | |
| | Cortland | |
| | Mayfield | |
7. Area of land within your MS4 in square miles: 9.88
8. Percent of MS4 served by combined sewer: 0 Percent of MS4 served by separate sewer: 100

Impaired Waters

The most recent 303(d) list may be found at <https://www2.illinois.gov/epa/topics/water-quality/watershed-management/tmdls/Pages/303d-list.aspx>. Information regarding TMDLs may be found at <https://www2.illinois.gov/epa/topics/water-quality/watershed-management/tmdls/Pages/default.aspx>.

9.

Name(s) of known receiving waters (in and within 3 miles of MS4 area)	Impairment listed on 303d List or TMDL?
Kishwaukee River	<input checked="" type="radio"/> Yes <input type="radio"/> No

9a. If impaired, which potential causes and source?

Causes: PCBs, Fecal Coliforms, Mercury Source: _____

9b. Are the receiving waterbodies included in an approved TMDL or alternate water quality management plan? ☐ Yes ☒ No

9c. Is the MS4 community included in the chloride variance? ☐ Yes ☒ No

Program Responsibility

10. Shared Responsibility

Is your MS4 responsible for any permit requirements of another MS4 community? ☐ Yes ☒ No

Does your MS4 Community rely on another MS4 to satisfy any of the permit requirements? ☐ Yes ☒ No

11. Co-Permittee

Is your MS4 Community a Co-Permittee with another MS4 Community? ☐ Yes ☒ No

12. Other contacts responsible for implementation or coordination of Stormwater Management Program

Name: _____ Title: _____

Phone: _____ Email: _____

Area of Responsibility: _____

Part II. Best Management Practices (include shared responsibilities) which have been implemented or are proposed to be implemented in the MS4 area

A. Public Education and Outreach

Approximate date first implemented: June, 2014 Frequency of each BMP program: _____

Qualifying Local Programs

DeKalb County Stormwater Committee and Kishwaukee Watershed Steering Committee

Measurable Goals (include shared responsibilities)

☒ A.1 Distributed Paper Material

Brief Description of BMP

SWPPP brochures and manuals are available at the Community Development Department.

Measurable Goals, including frequencies

Provide access to brochures, manuals, and the Illinois Urban Manual.

Milestones

Year 1: Continue to provide easy access to information and update as necessary.

Year 2: Continue to provide easy access to information and update as necessary.

Year 3: Continue to provide easy access to information and update as necessary.

Year 4: Continue to provide easy access to information and update as necessary.

Year 5: Continue to provide easy access to information and update as necessary.

Additional Info

BMP Number: _____

☐ A.2 Speaking Engagement

☐ A.3 Public Service Announcement

☐ A.4 Community Event

☒ A.5 Classroom Education Material

Brief Description of BMP

Flood prevention information is available at the Sycamore Public Library and participation in CRS. CRS includes mailing

Measurable Goals, including frequencies

Provide the copies of the following documents, available at the City office:

- Above the Flood: Elevating Your Floodprone House, FEMA-347 (2000)
- Answers to Questions About the National Flood Insurance Program, F-084 (2011)
- Elevated Residential Structures, FEMA-54 (1984)
- Protecting Manufactured Homes from Floods and Other Hazards, FEMA P-85 (2009)
- Protecting Floodplain Resources, FEMA-268 (1996)
- Reducing Damage from Localized Flooding, FEMA 511 (2005)

Milestones

Year 1:

Year 2:

Year 3:

Year 4:

Year 5:

Additional Info

BMP Number:

☒ A.6 Other Public Education

Brief Description of BMP

Measurable Goals, including frequencies

Milestones

Year 1:

Year 2:

Year 3:

Year 4:

Year 5:

Additional Info

BMP Number:

B. Public Participation/Involvement

Approximate date first implemented: Frequency of each BMP program:

Qualifying Local Programs

Measurable Goals (include shared responsibilities)

- ☐ B.2 Educational Volunteer
- ☒ B.3 Stakeholder Meeting

Brief Description of BMP

DeKalb Urban Area Stakeholders Group includes members from Sycamore, DeKalb, and other local areas within DeKalb County.

Measurable Goals, including frequencies

Attend meetings serving as the representative of the City of Sycamore.

Milestones

Year 1: If panel meets, attend meeting.

Year 2: If panel meets, attend meeting.

Year 3: If panel meets, attend meeting.

Year 4: If panel meets, attend meeting.

Year 5: If panel meets, attend meeting.

Additional Info

BMP Number: _____

☐ B.4 Public Hearing

☐ B.5 Volunteer Monitoring

☒ B.6. Program Involvement

Brief Description of BMP

Participation in the Community Rating System (CRS)

Measurable Goals, including frequencies

The City of Sycamore participates in FEMA's Community Rating System and has completed its 4-year cycle verification for 2022.

Milestones

Year 1: Retain CRS Level 7 status

Year 2: Retain CRS Level 7 status

Year 3: Retain CRS Level 7 status

Year 4: Retain CRS Level 7 status

Year 5: Retain CRS Level 7 status

Additional Info

BMP Number: _____

☐ B.7 Other Public Involvement

C. Illicit Discharge Detection and Elimination

Approximate date first implemented: _____ Frequency of each BMP program: Updated continuously

Qualifying Local Programs

Storm Sewer Atlas

Measurable Goals (include shared responsibilities)

☒ C.1 Sewer Map Preparation

Brief Description of BMP

The City has reviewed and continues to review and update its stormsewer atlas to include corrections and additions of publicly accepted stormsewers. This is managed by the Public Works Department via ArcGIS software.

Measurable Goals, including frequencies

Update maps with each new development and each discovery of inaccuracies or new information.

Milestones

Year 1: Continue to update information.

Year 2: Continue to update information.

Year 3: Continue to update information.

Year 4: Continue to update information.

Year 5: Continue to update information.

Additional Info

BMP Number: _____

☒ C.2 Regulatory Control Program

Brief Description of BMP

Illinois Discharge Program

Measurable Goals, including frequencies

Enforcement of City Program via the Unified Development Ordinance (UDO)

Milestones

Year 1: Continue to enforce program.

Year 2: Continue to enforce program.

Year 3: Continue to enforce program.

Year 4: Continue to enforce program.

Year 5: Continue to enforce program.

Additional Info

BMP Number: _____

☐ C.3 Detection/Elimination Prioritization Plan

☒ C.4 Illicit Discharge Tracing Procedures

Brief Description of BMP

Illicit Discharge Tracing Procedures

Measurable Goals, including frequencies

The City traces illicit discharges as they are identified.

Milestones

Year 1: Continue tracing.

Year 2: Continue tracing.

Year 3: Continue tracing.

Year 4: Continue tracing.

Year 5: Continue tracing.

Additional Info

BMP Number: _____

☒ C.5 Illicit Source Removal Procedures

Brief Description of BMP

The City has developed a list of emergency contacts and completed Incident Command System Training.

Measurable Goals, including frequencies

All new employees are required to complete entry level ICS training. Management staff complete additional training. Emergency contacts will continue to be updated.

Milestones

Year 1: Update contacts and continue training.

Year 2: Update contacts and continue training.

Year 3: Update contacts and continue training.

Year 4: Update contacts and continue training.

Year 5: Update contacts and continue training.

Additional Info

BMP Number: _____

☐ C.6 Program Evaluation and Assessment

☒ C.7 Visual Dry Weather Screening

Brief Description of BMP

Monitoring and inspection of stormwater structures.

Measurable Goals, including frequencies

All outfalls are screened annually. 20% of stormsewer catch basins and inlets to be screened annually. Annual evaluation of the screening program to be done. All of this to be documented through the Public Works Department as inspections, vactoring, and cleanings occur. Inspections are evident through manhour tallies.

Milestones

Year 1: Continue to visually inspect outfalls for illicit discharges and review effectiveness of program.

Year 2: Continue to visually inspect outfalls for illicit discharges and review effectiveness of program.

Year 3: Continue to visually inspect outfalls for illicit discharges and review effectiveness of program.

Year 4: Continue to visually inspect outfalls for illicit discharges and review effectiveness of program.

Year 5: Continue to visually inspect outfalls for illicit discharges and review effectiveness of program.

Additional Info

BMP Number: _____

☐ C.8 Pollutant Field Testing

☒ C.9 Public Notification

Brief Description of BMP

The City's website provides access to a brochure on stormwater pollution prevention.

Measurable Goals, including frequencies

Continue to publicize and update NPDES information.

Milestones

Year 1: Provide on website.

Year 2: Provide on website.

Year 3: Provide on website.

Year 4: Provide on website.

Year 5: Provide on website.

Additional Info

BMP Number: _____

☐ C.10 Other Illicit Discharge Controls

D. Construction Site Runoff Control

Approximate date first implemented: _____ Frequency of each BMP program: _____

Qualifying Local Programs

The City of Sycamore has adopted a Soil Erosion Control Ordinance which follows the specifications of the IEPA. The ordinance allows the City to enforce this for all sites regardless of the size.

Measurable Goals (include shared responsibilities)

☒ D.1 Regulatory Control Program

Brief Description of BMP

SWPPP

Measurable Goals, including frequencies

Each applicant is responsible for the management of their project site and the City completes spot inspections to enforce the SWPPP. If necessary, the City issues ordinance violations to achieve compliance. Please see attached reports for reference.

Milestones

Year 1:	Continued enforcement.
Year 2:	Continued enforcement.
Year 3:	Continued enforcement.
Year 4:	Continued enforcement.
Year 5:	Continued enforcement.

Additional Info

BMP Number: _____

☐ D.2 Erosion and Sediment Control BMPs

☐ D.3 Other Waste Control Program

☒ D.4 Site Plan Review Procedures

Brief Description of BMP

Plan review for SESC & SWPPP

Measurable Goals, including frequencies

The City reviews all plans for proper SESC and SWPPP. Regardless of site properties, SWPPP is required per City Ordinance. The City will not issue a building permit until an IL 10 permit has been issued for sites greater than 1 acre.

Milestones

Year 1:	Continue monitoring permit activity.
Year 2:	Continue monitoring permit activity.
Year 3:	Continue monitoring permit activity.
Year 4:	Continue monitoring permit activity.
Year 5:	Continue monitoring permit activity.

Additional Info

BMP Number: _____

--

☐ D.5 Public Information Handling Procedures

☒ D.6 Site Inspection/Enforcement Procedures

Brief Description of BMP

Adoption of SESC measures in the City Ordinance which follows the regulations of the IEPA. The City enforces this at all size regardless of size.

Measurable Goals, including frequencies

The city has and will continue to complete and document inspections. Violations will be subject to fine and remediation.

Milestones

Year 1:	Continue enforcement.
Year 2:	Continue enforcement.
Year 3:	Continue enforcement.
Year 4:	Continue enforcement.
Year 5:	Continue enforcement.

Additional Info

BMP Number: _____

--

☐ D.7 Other Construction Site Runoff Controls

E. Post-Construction Runoff Control

Approximate date first implemented: _____ Frequency of each BMP program: _____

Qualifying Local Programs

--

Measurable Goals (include shared responsibilities)

☐ E.1 Community Control Strategy

☒ E.2 Regulatory Control Program

Brief Description of BMP

Enforcement of the Municipal Code.

Measurable Goals, including frequencies

The Municipal Code provides the City with the authority to monitor and require corrective action of illicit discharges.

Milestones

Year 1: Continue enforcement.

Year 2: Continue enforcement.

Year 3: Continue enforcement.

Year 4: Continue enforcement.

Year 5: Continue enforcement.

Additional Info

BMP Number: _____

☐ E.3 Long Term O & M Procedures

☒ E.4 Pre-Construction Review of BMP Designs

Brief Description of BMP

Site plan review for compliance.

Measurable Goals, including frequencies

Review site plans for BMP compliance with the City Municipal Code, UDO, and IEPA regulations.

Milestones

Year 1: Continue to review all plans for BMP compliance.

Year 2: Continue to review all plans for BMP compliance.

Year 3: Continue to review all plans for BMP compliance.

Year 4: Continue to review all plans for BMP compliance.

Year 5: Continue to review all plans for BMP compliance.

Additional Info

BMP Number: _____

☒ E.5 Site Inspections During Construction

Brief Description of BMP

Site inspections

Measurable Goals, including frequencies

The applicant is responsible for completion SWPPP strategies and the City routinely inspects the site for compliance.

Milestones

Year 1: Continue to inspect construction sites.

Year 2: Continue to inspect construction sites.

Year 3: Continue to inspect construction sites.

Year 4: Continue to inspect construction sites.

Year 5: Continue to inspect construction sites.

Additional Info

BMP Number: _____

☒ E.6 Post-Construction Inspections

Brief Description of BMP

Inspection of completed construction sites.

Measurable Goals, including frequencies

The City completes inspections of all sites prior to the issuance of a permit of occupancy. This includes all sites regardless of size. Field occupancy permits are not issued until stabilization is 70% complete or a NOI has been issued by the IEPA.

Milestones

Year 1: Continue to enforce site final stabilization prior to final occupancy.

Year 2: Continue to enforce site final stabilization prior to final occupancy.

Year 3: Continue to enforce site final stabilization prior to final occupancy.

Year 4: Continue to enforce site final stabilization prior to final occupancy.

Year 5: Continue to enforce site final stabilization prior to final occupancy.

Additional Info

BMP Number: _____

☐ E.7 Other Post-Construction Runoff Controls

F. Pollution Prevention/Good Housekeeping

Approximate date first implemented: _____ Frequency of each BMP program: _____

Qualifying Local Programs

Measurable Goals (include shared responsibilities)

☒ F.1 Employee Training Program

Brief Description of BMP

The City has a training program for employees regarding stormwater pollution prevention. Employees are reminded on rain days of the City ordinance for illicit discharges. If a suspect discharge is observed the engineering department is notified. Employees often look for illegal sewer connections on dry days when catch basins are cleaned.

Measurable Goals, including frequencies

Identify and participate in stormwater pollution prevention training opportunities.

Milestones

Year 1: Identify and take action on storm water issues.

Year 2: Identify and take action on storm water issues.

Year 3: Identify and take action on storm water issues.

Year 4: Identify and take action on storm water issues.

Year 5: Identify and take action on storm water issues.

Additional Info

BMP Number: _____

☒ F.2 Inspection and Maintenance Program

Brief Description of BMP

The City has a training program for employees regarding stormwater pollution prevention. Employees are reminded on rain days of the City ordinance for illicit discharges. If a suspect discharge is observed the engineering department is notified. Employees often look for illegal sewer connections on dry days when catch basins are cleaned.

Measurable Goals, including frequencies

Identify and participate in stormwater pollution prevention training opportunities.

Milestones

Year 1: Identify and take action on storm water issues.

Year 2: Identify and take action on storm water issues.

Year 3: Identify and take action on storm water issues.

Year 4: Identify and take action on storm water issues.

Year 5: Identify and take action on storm water issues.

Additional Info

BMP Number: _____

☒ F.3 Municipal Operations Storm Water Control

Brief Description of BMP

Street Sweeping and storm sewer jetting.

Measurable Goals, including frequencies

Comply with APWA and EPA standards for street sweeping and storm sewer cleaning.

Milestones

Year 1: Continue street sweeping operations and track materials collected & disposed.

Year 2: Continue street sweeping operations and track materials collected & disposed.

Year 3: Continue street sweeping operations and track materials collected & disposed.

Year 4: Continue street sweeping operations and track materials collected & disposed.

Year 5: Continue street sweeping operations and track materials collected & disposed.

Additional Info

BMP Number: _____

☒ F.4 Municipal Operations Waste Disposal

Brief Description of BMP

Leaf pickup program

Measurable Goals, including frequencies

Complete annual leaf and brush pickup of materials that may otherwise enter the stormsewer system.

Milestones

Year 1: Continue the annual leaf pickup program.

Year 2: Continue the annual leaf pickup program.

Year 3: Continue the annual leaf pickup program.

Year 4: Continue the annual leaf pickup program.

Year 5: Continue the annual leaf pickup program.

Additional Info

BMP Number: _____

--

☐ F.5 Flood Management/Assess Guidelines

☐ F.6 Other Municipal Operations Controls

BMPs Currently Implemented and Proposed

BMP Number	Location

Approximate Pollutant Reduction Resulting from each BMP

BMP Number	Pollutant	Reduction

Instream Monitoring Program

Is there an instream monitoring program currently in place? ☒ Yes ☐ No

Is an instream monitoring program currently being proposed? ☐ Yes ☒ No

If Yes, which parameters are monitored and at what frequency?

Parameter	Frequency
Visual water quality	Bi-weekly w Monthly Photos

Sediment Monitoring

Is sediment monitoring currently taking place? ☐ Yes ☒ No

Sample Monitoring of Outfalls

Is sample monitoring of outfalls currently taking place? ☒ Yes ☐ No

If Yes, list locations, pollutant parameters, and frequency of sampling.

Location	Pollutant Parameter	Frequency of Sampling
Subdivision ponds	Visual water quality & outfall condition	Annual

Other Monitoring

Describe other types of monitoring implemented or proposed to evaluate the BMP effectiveness or water quality impact of stormwater.

--

Part III. Certification

I certify under penalty of law that this document and all attachments were prepared under my direction or supervision in accordance with a system designed to assure that qualified personnel properly gathered and evaluated the information submitted. Based on my inquiry of the person or persons who manage the system, or those persons directly responsible for gathering the information, the information submitted is, to the best of my knowledge and belief, true, accurate, and complete. I am aware that there are significant penalties for knowingly submitting false information, including the possibility of fines and imprisonment.

Any person who knowingly makes a false, fictitious, or fraudulent material statement, orally or in writing, to the Illinois EPA commits a Class 4 felony. A second or subsequent offense after conviction is a Class 3 felony (415 ILCS 5/44 (h)).

Mark Bushnell

Authorized Representative Name

City Engineer

Title


Authorized Representative Signature

3/2/23
Date

You may complete this form online and save a copy locally before printing and signing the form. It should then be sent to:

Illinois Environmental Protection Agency
Bureau of Water
Division of Water Pollution Control
Attn: Permit Section
P.O. Box 19276
1021 North Grand Avenue East
Springfield, IL 62794-9276

Information required by this form must be provided to comply with 415 ILCS 5/39 (2000). Failure to do so may prevent this form from being processed and could result in your application being denied.



CITY OF SYCAMORE, ILLINOIS

NPDES PERMIT FOR STORMWATER DISCHARGES
FROM MUNICIPAL SEPARATE STORMWATER SYSTEMS (MS4)

2023 ANNUAL FACILITY INSPECTION REPORT
MARCH 2022 TO FEBRUARY 2023 REPORTING PERIOD

A. Changes to Best Management Practices (BMPs)

The City of Sycamore saw no new changes to BMP commitments within the Notice of Intent (NOI) submitted from the previous reporting period.



Status of Compliance with Permit Conditions

A. Public Education and Outreach

A.1 Distribution of Paper Material – The City of Sycamore has information available in both hard copy format and in electronic versions available to the public. This information is primarily available on the Community Development Department's page on the City's website (<https://cityofsycamore.com/development/>) or in person at 541 DeKalb Avenue and 475 North Cross Street.

Goal: Continue to provide information to the general public, residents, and permit applicants.

Status: The following information is available in hard copy and electronic format.

The following websites have been updated to reflect our new website from January of 2023

- Soil Erosion Control Requirements
<https://www.cityofsycamore.com/DocumentCenter/View/89/Soil-Erosion-Control-Requirements-PDF?bidId=>
- Sycamore NPDES Renewal
<https://www.cityofsycamore.com/197/NPDES-MS-4-Information>
- Waste Management at your Door Collection of Hazardous Material
<https://www.cityofsycamore.com/DocumentCenter/View/175/At-Your-Door-Disposal-Service-PDF?bidId=>
- Erosion Control Ordinance
https://codelibrary.amlegal.com/codes/sycamoreil/latest/sycamore_il/0-0-0-16643•
- Illinois Urban Manual
https://illinoisurbanmanual.org/wpcontent/uploads/2019/04/IUM_FM_2013_FINAL_FINAL_11.4.13.pdf



A.5 Classroom Educational Material

Goal: Continue to provide Educational Material utilizing the Sycamore Public Library.

Status: The following information is available in hard copy format at the Sycamore Public Library.

- Answers to Questions About the National Flood Insurance Program, F-084 (2011)
- Elevated Residential Structures, FEMA-54 (1984)
- Protecting Manufactured Homes from Floods and Other Hazards, FEMA P-85 (2009)
- Protecting Floodplain Resources, FEMA-268 (1996)
- Reducing Damage from Localized Flooding, FEMA 511 (2005)
- Above the Flood: Elevating Your Floodprone House, FEMA-347 (2000)

A.6 Other Public Education

The City of Sycamore participates as a voting member in the DeKalb County Stormwater Committee last held on **(2/9/23)** and attends the Kishwaukee Watershed Steering Committee. <https://dekalbcountywatersheds-il.org/upper-south-branch-plan>

Goal: Continue to participate in these meetings.

Status: The City Engineer serves as the City's representative at these meetings.

B. Public Participation / Involvement

B.3 Public Panel

The City of Sycamore participates in the DeKalb Urban Stakeholders Group. DeKalb Urban Area Stakeholders Group includes members of Sycamore, DeKalb and other areas within DeKalb County.

Goal: Continue to participate in these meetings.

Status: Meetings have not met recently due to lack of actionable items and Covid.

B.6 Program Involvement

The City of Sycamore participates in the Community Rating System (CRS). By doing so, the City provides mailers and flooding information to residents in hard copy format. This letter is sent to parties within and adjacent to the floodplain. In addition, each utility bill receives Notice indicating to contact the Public Works Department at 457 N Cross St.

The City's was recertified as a Level 7 Community in February of 2023.

Goal: Continue to send notices to properties.

Status: Notices have been sent.



B. Illicit Discharge Detection and Elimination

C.1 Storm Sewer Atlas

The City of Sycamore owns and maintains a GIS storm sewer atlas. All new subdivisions and developments are required to provide as-built data in electronic format so it can be added to the GIS system. Periodically these are printed in grid format. Current versions are available on the website.

<https://www.cityofsycamore.com/197/NPDES-MS-4-Information>

Goal: Continue to maintain and update storm sewer atlas.

Status: Storm sewer atlas is updated and now available online.

C.2 Illicit Discharge Ordinance

The City of Sycamore has an adopted ordinance prohibiting illicit discharges. The City Code is available online. The City continues

https://codelibrary.amlegal.com/codes/sycamoreil/latest/sycamore_il/0-0-0-11510

Goal: Continue to enforce and update, as needed, the City Code prohibiting illicit discharges.

Status: The City has continued to enforce this. Copies of reports and fines can be found on the City's MS-4 webpage.

C.4 Illicit Discharge Tracing Procedures

The City traces illicit discharges when they are found by City staff or reported to Public Works, Community Development or Emergency Services. In an emergency the Fire Department will response using the Incident Command System Procedures. For smaller events the City has put together the following checklist to make sure the proper contacts are readily available and contacted, on an as needed basis.

<https://www.cityofsycamore.com/DocumentCenter/View/210/Illicit-Discharge-Incident-PDF?bidId=>

Goal: Continue to identify, react to, document and mitigate Illicit Discharges.

Status: The City has continued to follow these procedures.



C.5 Public Notification

The City's website includes a stormwater pollution prevention brochure. This is found on the Community Development web page under Forms and Helpful information

<https://www.cityofsycamore.com/DocumentCenter/View/89/Soil-Erosion-Control-Requirements-PDF?bidId=>

In addition, all permit applicants are made aware of the City's SWPPP requirements and permits are not issued for sites larger than 1 acre unless a NOI has been issued.

Goal: Continue to provide information to the public and inform applicants of their requirements.

Status: The City has continued to follow these procedures and tracks all issued permits. On February 6, 2023 (Consideration #14A the Sycamore City Council completed and annual review and approval of the City of Sycamore Stormwater Management Plan and Program). This was at a public meeting and no comments were received.

<https://www.cityofsycamore.com/AgendaCenter/ViewFile/Agenda/02062023-126>

C.7 Visual Dry Weather Screening

Annual screening of 25% of storm sewer catch basins and inlets. Annual evaluation of effectiveness of screening program. This is documented through Public Works work records as they are inspected as they are vactored and storm sewers are jetted. This is in addition to the visual inspection completed during street sweeping and when resident calls are taken.

Very rarely does the City receive reports of storm sewer backups or illicit discharges, therefore the frequency of the inspections is considered adequate.

The City has selected three waterway locations to complete visual inspection of water quality. These are locations along the Kishwaukee River and Martin's Ditch. These allow for a comparison of water entering City limits to an intermediate point or prior to it leaving City limits.

Goal: Continue to visually inspect outfalls for illicit discharges, review effectiveness of the program. Continue to monitor waterway locations approximately every two weeks.

Status: The City has continued to follow these procedures.



D. Construction Site Stormwater Runoff Control

D.1 Regulatory Control Program

The City of Sycamore has adopted a Soil Erosion Control Ordinance which closely mimics the rules and regulations. The ordinance allows the City to enforce this for all sites regardless of the size. Each applicant is responsible for management of their own site, but the City completes spot inspections and enforces the SWPPP.

If necessary, the City issues ordinance violations to achieve compliance.

https://codelibrary.amlegal.com/codes/sycamoreil/latest/sycamore_il/0-0-0-16643

Goal: Continue to enforce and update, as needed, the City Code.

Status: The City has continued to enforce



D.2 Erosion and Sediment Controls – Site Operators

The City of Sycamore has adopted a Soil Erosion Control Ordinance which closely mimics the rules and regulations. The ordinance allows the City to enforce this for all sites regardless of the size. Each applicant is responsible for management of their own site, but the City completes spot inspections and enforces the SWPPP.

If necessary, the City issues ordinance violations to achieve compliance. Violation increase if the applicant is a repeat offender. In addition, applicant is not allowed to schedule additional inspections if there is an outstanding fine.

https://codelibrary.amlegal.com/codes/sycamoreil/latest/sycamore_il/0-0-0-16643

Goal: Continue to enforce and follow reporting guidelines.

Status: The City has continued to enforce this. Copies of reports and fines can be found within this document.

D.3 Site-Plan Reviews

The Community Development will not issue permits to sites larger than one acre unless an IEPA Permit has been issued by the IEPA. This is verified by searching on the IEPA website.

<http://dataservices.epa.illinois.gov/NoticesofIntent/ConstructQuickSearch.aspx>

As mentioned previously, the City of Sycamore has adopted a Soil Erosion Control Ordinance which closely mimics the rules and regulations. The ordinance allows the City to enforce this for all sites regardless of the size. Earthmoving activities greater than 10,000 sf require a City permit.

Goal: Continue to enforce and follow reporting guidelines.

Status: The City has continued to complete plan reviews; issue permits and enforce the City code as needed.

D.5 Site-Inspections

The Community Development completes inspections of sites during construction. For sites with their own IEPA permit, the City checks the documentation.

Goal: Continue to complete inspections.

Status: The City has continued to complete inspections. Samples can be found within the attached document.

E. Post – Construction Stormwater Management in New Development and Redevelopment

E.7 - Other Post Construction Runoff Controls

The City has adopted City Code 9-7-13 and 9-7-14 and Section 10 of the DeKalb County IL Stormwater Ordinance. In addition, the City will not issue an occupancy permit or closeout a permit until 70% stabilization has been achieved.



Goal: The City will continue to administer current ordinances related to new post-construction site runoff control.

Status: The City has continued to enforce these regulations.

F. Pollution Prevention/ Good Housekeeping for Municipal Operations

F.1 – Employee Training Program

Employee Pollution Prevention - The City of Sycamore trains its employees to identify, evaluate, correct and document the release of pollutants into the City's storm sewer system. Every City employee undergoes the first two levels of Incident Command System Training. The City has also presented the DeKalb Homebuilders association. A copy of this can be found on the City's website.

Goal: Distribute employee pollution prevention information to all Public Works employees. Conduct a short training session for all Public Works employees. Complete in-person training with an instructor (Kelsy Musich).

F.2—Inspection and Maintenance Program (Leaf Pickup, Street & Parking Lot Cleaning, and Storm Sewer Cleaning)

Goal: The City completes an annual leaf pick up program. Instructions are provided to residents to prevent leaves from being deposited into the storm sewer system or drainage ditches. <https://cityofsycamore.com/public-works/leaf-pick-program/>

The City of Sycamore owns two street sweepers which are used for routine clean up and emergency response. The City regularly conducts sweeping of streets and parking lots, and maintenance of catch basins in high traffic areas. The City completes storm sewer jetting and structure vactoring and repairs. All of these hours are tracked by employee and equipment.

Status: The City continues to complete these activities and track the hours associated with them.

G. F.6—Other Municipal Operations Controls.

Goal: The City uses interior wash bays and a triple sanitary trap to collect salt and sediment.

Status: The City continues to utilize and maintain these facilities.



B. RESULTS OF INFORMATION COLLECTED AND ANALYZED

The City found that there were no significant changes in operations or maintenance procedures and there weren't any events significant to require changes.

C. SUMMARY OF ACTIVITIES PLANNED DURING NEXT REPORTING CYCLE

A.1 Distribution of Paper Material

Measurable Goal: The City of Sycamore will update its brochure and post it to the website.

B.3 Stakeholder Meeting

Measurable Goal: The City of Sycamore will discuss the MS-4 Permit and ask for public comment at a City Council meeting.

B.7 Other Public Involvement

Measurable Goal: The City of Sycamore continue to update our website.

C.1 Storm Sewer Atlas

Measurable Goal: The City of Sycamore continue to update our atlas and make corrections as needed.

C.2 Illicit Discharge Ordinance

Measurable Goal: The City has continued to enforce this ordinance.

C.4 Illicit Discharge Tracing Procedures

Measurable Goal: The City will continue to mandate ICS training for all new employees.

C.7 Visual Dry Weather Screening

Measurable Goal/Frequency: The City will continue to inspect or clean approximately 25% of the storm sewer system on an annual basis.

Measurable Goal/Frequency: The City will continue to visually inspect the four locations approximately twice per month. These inspections will include photos.

D.1 Regulatory Control Program

Measurable Goal: Continue to enforce the City Code. Community Development will continue



to complete inspections and audits during construction project and levy appropriate enforcement when necessary.

D.3 Site Plan Reviews

Measurable Goal: Continue to enforce the City Code. Community Development will continue to complete inspections and audits during construction project and levy appropriate enforcement when necessary.

D.5 Site Inspections

Measurable Goal: Continue to enforce the City Code and complete SWPPP inspections or a view of documentation.

E.7 - Other Post Construction Runoff Controls

Measurable Goal: Continue to enforce City Code 9-7-13 and 9-7-14 and Section 10 of the DeKalb County IL Stormwater Ordinance.

F.1 – Employee Training Program

Measurable Goal: Continue to work with Public Work's staff to educate new staff on procedures. The City will continue to mandate ICS training for all new employees.

F.2—Inspection and Maintenance Program (Leaf Pickup, Street & Parking Lot Cleaning, and Storm Sewer Cleaning)

Measurable Goal: The City will continue to complete these programs and document both manhours and equipment hours during each task.



E. NOTICE OF RELIANCE ON ANOTHER GOVERNMENT ENTITY

The City of Sycamore Partners with Watershed Study groups but does not rely on this agency to satisfy permit requirements.

F. ACTIVE CONSTRUCTION SITES

As the City WWTP project has been completed since the last submittal there is no Current construction site in operation that is owned by the City.

STORMWATER MANAGEMENT/EROSION CONTROL INSPECTION LOG

Applicant / Project Name **FINNEY HOMES**
 Street Address **1937 NATIONAL ST.**

Inspector Name: **DB JS RC** Date: **12-6-2022**

Type of Inspection: ☒ Required (List): Start of Construction ☐ Post-Storm – Approx. Rainfall:

Do you suspect illegal discharges? ☐ Yes ☒ No

Are all of the following BMP's installed and maintained? **No**

BMP	Y / N	Corrective Action Required	Due Date
Construction entrance stabilized.	Y		
Aggregate curb ramps installed. (Dirt curb ramps are not permitted)	Y		
All nearby inlets protected and maintained.	N	PROTECT DOWNSTREAM INLET.	*
Perimeter silt fence installed and maintained.	Y		
Stockpiles silt fence installed and maintained.	NA		
Street clean and free of sediment.	Y		
Dewatering (pumping) into storm water system.	N		
Temporary or permanent cover established, as required.	Y		
Concrete Washout installed.	Y		



Correct by the end of business on 12-7-2022.

STORMWATER MANAGEMENT/EROSION CONTROL INSPECTION LOG

Applicant / Project Name		Shodeen Homes	
Street Address		Reston Ponds	
Inspector Name:	DB JS RC	Date:	8-12-2022
Type of Inspection:	<input checked="" type="checkbox"/> Required (List): Start of Construction <input type="checkbox"/> Post-Storm – Approx. Rainfall:		
Do you suspect illegal discharges?	<input type="checkbox"/> Yes <input checked="" type="checkbox"/> No		
Are all of the following BMP's installed and maintained? No			
BMP	Y / N	Corrective Action Required	Due Date
Construction entrance stabilized.	Y		
Aggregate curb ramps installed. (Dirt curb ramps are not permitted)	Y		
All nearby inlets protected and maintained.	N	Maintain(clean) basket in front of lot 222. Check/clean all baskets in Reston Ponds.	*
Perimeter silt fence installed and maintained.	N	Install curb protection at lot 237.	*
Stockpiles silt fence installed and maintained.	Y		
Street clean and free of sediment.	N	Clean curbs and clean streets at lots 222 and 216. Check whole neighborhood for street debris.	*
Dewatering (pumping) into storm water system.	N		
Temporary or permanent cover established, as required.	Y		
Concrete Washout installed.	Y		
<p>* Correct a soon as possible but certainly before next rain event. I will be rechecking Reston ponds on 8-19-2022</p>			

Robert Cyr

From: Robert Cyr
Sent: Friday, August 12, 2022 2:20 PM
To: joswi_correos@shodeenhomes.com; jack_haller@shodeen.com
Subject: RE: EROSION CONTROL RESTON PONDS
Attachments: EROSION CONTROL Reston ponds 8-12-2022.pdf

Good afternoon,

Thank you for meeting me at the neighborhood inspection today. I appreciate all the progress that was made. I attached a report with a couple of outstanding items to be completed as soon as possible. Additionally, the neighborhood streets could use a street sweep pretty soon as there are a few pockets of dirt and debris buildup in areas.

Thanks!
Robert

From: Robert Cyr
Sent: Monday, August 08, 2022 3:37 PM
To: joswi_correos@shodeenhomes.com; jack_haller@shodeen.com
Subject: EROSION CONTROL RESTON PONDS

Good afternoon Gentlemen,

In light of recent complaints and visual inspection today post rain event, I will be making a sweep through Reston Ponds this Friday, 8-12-2022. I realize you claim there are supply chain issues. I have been asking for some of the corrections since March and there are still many areas that are deficient. Please correct all erosion control deficiencies in Reston Ponds.

Observations today

- Missing road inlet baskets
- Land inlets not protected
- Silt fence damaged between lots/existing homes
- Missing silt fence/waddles/undercut along curbs
- Mud and gravel in street

The next inspection will be Friday 8-12-2022.

Regards,
Robert Cyr
City of Sycamore
Electrical/Building Inspector
815-895-4434

STORMWATER MANAGEMENT/EROSION CONTROL INSPECTION LOG

Applicant / Project Name		Silverthorne Homes	
Street Address		911 Congress Ave.	
Inspector Name:	DB JS RC	Date:	3-15-2022
Type of Inspection:	<input checked="" type="checkbox"/> Required (List): Start of Construction <input type="checkbox"/> Post-Storm – Approx. Rainfall:		
Do you suspect illegal discharges?	<input type="checkbox"/> Yes <input checked="" type="checkbox"/> No		
Are all of the following BMP's installed and maintained? No			
BMP	Y / N	Corrective Action Required	Due Date
Construction entrance stabilized.	Y		
Aggregate curb ramps installed. (Dirt curb ramps are not permitted)	Y		
All nearby inlets protected and maintained.	N	Install basket at street nearby inlets. These should have been in place before excavation started.	*
Perimeter silt fence installed and maintained.	N	Fix silt fence at perimeter immediately.	*
Stockpiles silt fence installed and maintained.	N	Fix silt fence at perimeter immediately.	*
Street clean and free of sediment.	N	Clean ALL debris from streets at the end of every day.	*
Dewatering (pumping) into storm water system.	N		
Temporary or permanent cover established, as required.	Y		
Concrete Washout installed.	Y		
<p>* Correct by the end of business on 3-18-2022.</p>			

STORMWATER MANAGEMENT/EROSION CONTROL INSPECTION LOG

Applicant / Project Name

SHODEEN HOMES

Street Address

344 Alden DriveInspector Name: DB JS **RC**

Date: 3-14-2022

Type of Inspection: ☒ Required (List): Start of Construction☐ Post-Storm – Approx. Rainfall:Do you suspect illegal discharges? ☐ Yes ☒ No

Are all of the following BMP's installed and maintained? No

BMP	Y / N	Corrective Action Required	Due Date
Construction entrance stabilized.	Y		
Aggregate curb ramps installed. (Dirt curb ramps are not permitted)	N		
All nearby inlets protected and maintained.	N	PROTECT ALL NEARBY STREET INLETS WITH PROPER BASKETS BEFORE ANY EXCAVATION.	*
Perimeter silt fence installed and maintained.	N	INSTALL SILT FENCING BEFORE EXCAVATION.	*
Stockpiles silt fence installed and maintained.	NA		
Street clean and free of sediment.	Y		
Dewatering (pumping) into storm water system.	N		
Temporary or permanent cover established, as required.	Y		
Concrete Washout installed.	N	PROVIDE A CONCRETE WASHOUT BEFORE ANY EXCAVATION.	*



THE ABOVE ITEMS NEED TO BE CORRECTED BEFORE ANY EXCAVATION COMMENCES.

STORMWATER MANAGEMENT/EROSION CONTROL INSPECTION LOG

Applicant / Project Name	SHODEEN / RESTON PONDS		
Street Address	475 Cloverlane Dr.(Lot 359) and ALL OF Reston ponds		
Inspector Name:	DB	JS	RC
			Date: 2-11-2022

Type of Inspection: ☒ Required (List): Start of Construction ☐ Post-Storm – Approx. Rainfall:

Do you suspect illegal discharges? ☐ Yes ☒ No

Are all of the following BMP's installed and maintained? No

BMP	Y / N	Corrective Action Required	Due Date
Construction entrance stabilized.	Y		
Aggregate curb ramps installed. (Dirt curb ramps are not permitted)	Y		
All nearby inlets protected and maintained.	N	Protect street inlets downstream of digging. Check all of Reston pond. Especially along Nottingham, Dr.	*
Perimeter silt fence installed and maintained.	N	Install waddles at all street frontages. Check all of Reston Ponds where dirt is exposed.	
Stockpiles silt fence installed and maintained.	N	Install waddles where stockpiles are close to street frontages.	
Street clean and free of sediment.	Y		
Dewatering (pumping) into storm water system.	N		
Temporary or permanent cover established, as required.	Y		
Concrete Washout installed.	Y		



Correct as soon as possible and before any digging commences.
Certainly before any thawing of snow occurs.

Pond Inspections and Outfall Reports

Location Map:

Krpan's Parkside Estates.



Section 1: Background Data

Subwatershed:	Outfall ID:
Date: 3/1/23	Time (Military): 10:30
Temperature: 40	Inspector(s): MB
Previous 48 Hours Precipitation: >0.1"	Photo's Taken (Y/N) Y If yes, Photo Numbers: see file
Land Use in Drainage Area (Check all that apply): <input type="checkbox"/> Open Space <input type="checkbox"/> Industrial x Institutional Legacy Center Dry Bottom Pond <input type="checkbox"/> Residential <input type="checkbox"/> Commercial Other: _____ Known Industries: _____	

Section 2: Outfall Description

LOCATION	MATERIAL	SHAPE		DIMENSIONS (IN.)	SUBMERGED
Storm Sewer (Closed Pipe)	<input checked="" type="checkbox"/> RCP <input type="checkbox"/> CMP <input type="checkbox"/> PVC <input type="checkbox"/> HDPE <input type="checkbox"/> Steel <input type="checkbox"/> Clay/Draintile <input type="checkbox"/> Other:	<input checked="" type="checkbox"/> Circular <input type="checkbox"/> Elliptical <input type="checkbox"/> Box <input type="checkbox"/> Other:	<input checked="" type="checkbox"/> Single <input type="checkbox"/> Double <input type="checkbox"/> Triple <input type="checkbox"/> Other:	Diameter/Dimensions: 24" and 36"	In Water: <input type="checkbox"/> No <input checked="" type="checkbox"/> Partially <input type="checkbox"/> Fully With Sediment: <input checked="" type="checkbox"/> No <input type="checkbox"/> Partially <input type="checkbox"/> Fully
Open drainage (swale/ditch)	<input type="checkbox"/> Concrete <input type="checkbox"/> Earthen <input type="checkbox"/> rip-rap <input type="checkbox"/> Other:	<input type="checkbox"/> Trapezoid <input type="checkbox"/> Parabolic <input type="checkbox"/> Other:		Depth: Top Width: Bottom Width:	

Section 3: Physical Indicators

INDICATOR	CHECK if Present	DESCRIPTION	COMMENTS
Outfall Damage	<input type="checkbox"/>	<input type="checkbox"/> Spalling, Cracking or Chipping <input type="checkbox"/> Peeling Paint <input type="checkbox"/> Corrosion	Outfalls were in good shape but should be cleaned in spring
Deposits/Stains	<input type="checkbox"/>	<input type="checkbox"/> Oily <input type="checkbox"/> Flow Line <input type="checkbox"/> Paint <input type="checkbox"/> Other:	
Abnormal Vegetation	<input type="checkbox"/>	<input type="checkbox"/> Excessive <input type="checkbox"/> Inhibited	
Poor pool quality	<input type="checkbox"/>	Odors Colors Floatables Oil Sheen Suds Excessive Algae Other:	
Pipe algae/growth	<input type="checkbox"/>	Brown Orange Green Other:	
Do physical indicators suggest an illicit discharge is present (Y/N):			

Flow Present?	Yes	No	If No, Skip to Section 7 and Close Illicit Discharge Investigation
Flow Description	Trickle	Moderate	Substantial

Section 4: Physical Indicators (Flowing Outfalls Only)

INDICATOR	CHECK if Present	DESCRIPTION	RELATIVE SEVERITY INDEX (1-3)		
Odor	<input type="checkbox"/> <input type="checkbox"/> <input type="checkbox"/>	<input checked="" type="checkbox"/> Sewage <input type="checkbox"/> Sulfide <input type="checkbox"/> Laundry Rancid/sour Petroleum/gas Other: <input type="checkbox"/>	1-Faint <input type="checkbox"/>	2 – Easily detected <input type="checkbox"/>	3 – Noticeable from a distance
Color (color chart)	<input type="checkbox"/> <input type="checkbox"/> <input type="checkbox"/> <input type="checkbox"/>	<input checked="" type="checkbox"/> Clear <input type="checkbox"/> Gray <input type="checkbox"/> Green <input type="checkbox"/> Multi-Color Brown Yellow Orange/Red Other: <input type="checkbox"/>	1-Faint colors in sample bottle <input type="checkbox"/>	2 – Clearly visible in sample bottle <input type="checkbox"/>	3 – Clearly visible in outfall flow
Turbidity	<input type="checkbox"/>	See severity	1-Slight cloudiness	2 – Cloudy	3 – Opaque
Floatables -Does Not Include Trash!!	<input type="checkbox"/>	Sewage Petroleum (oil sheen) Grease Suds and Foam (oil sheen) Other:	1-Few/slight; origin not obvious	2 – Some; indications of origin	3 - Some; origin clear
Do physical indicators (flowing) suggest an illicit discharge is present (Y/N):					

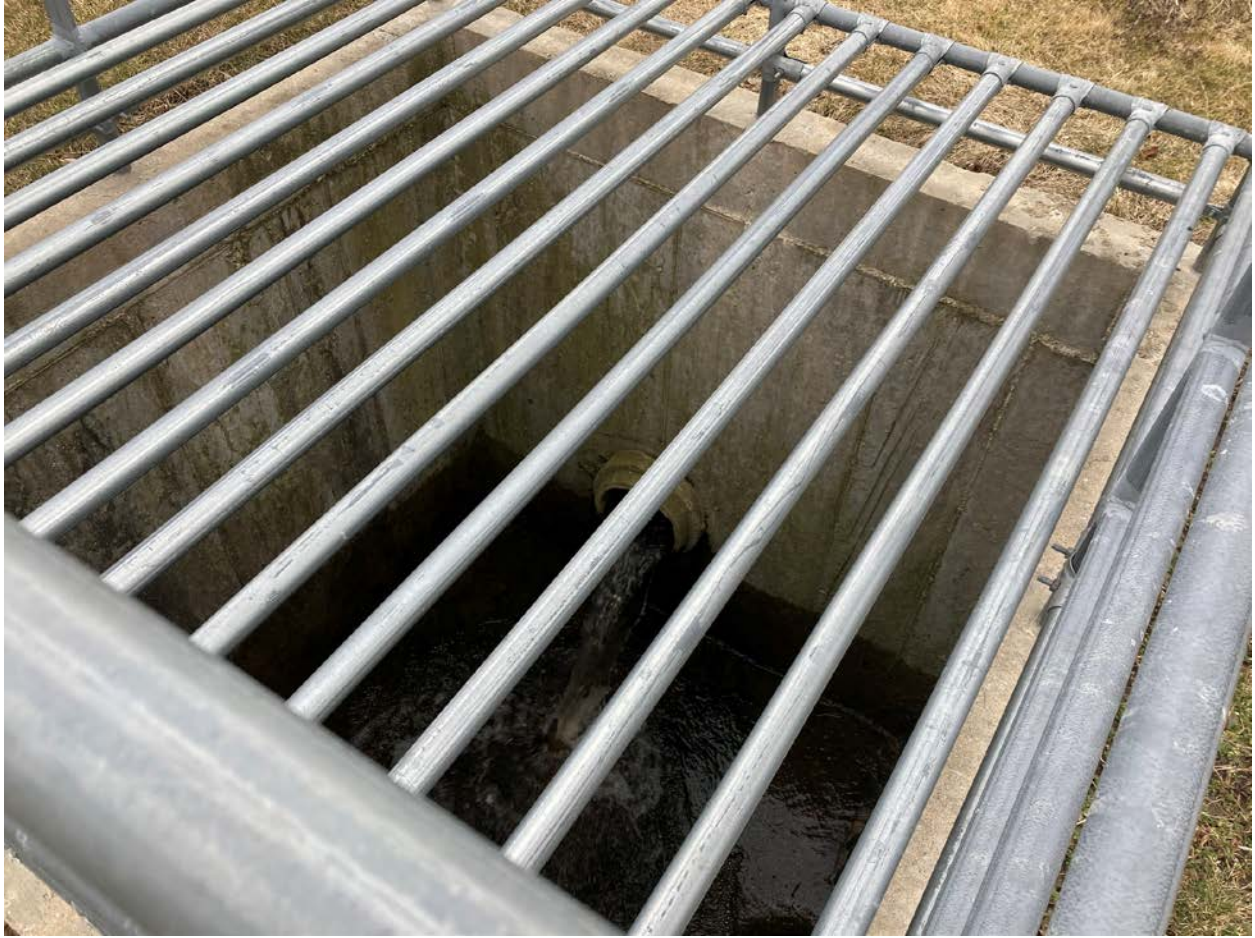
Section 5: Any Non-Illicit Discharge Concerns (e.g., trash or needed infrastructure repairs)?























Location Map:

Sycamore Park District

- Legacy Campus
- Memorial Park



Section 1: Background Data

Subwatershed:	Outfall ID:
Date: 3/1/23	Time (Military): 10:30
Temperature: 40	Inspector(s): MB
Previous 48 Hours Precipitation: >0.1"	Photo's Taken (Y/N) Y If yes, Photo Numbers: see file
Land Use in Drainage Area (Check all that apply): <input type="checkbox"/> Open Space <input type="checkbox"/> Industrial x Institutional Legacy Center Dry Bottom Pond <input type="checkbox"/> Residential <input type="checkbox"/> Commercial Other: _____ Known Industries: _____	

Section 2: Outfall Description

LOCATION	MATERIAL	SHAPE		DIMENSIONS (IN.)	SUBMERGED
Storm Sewer (Closed Pipe)	<input checked="" type="checkbox"/> RCP <input type="checkbox"/> CMP <input type="checkbox"/> PVC <input type="checkbox"/> HDPE <input type="checkbox"/> Steel <input type="checkbox"/> Clay/Draintile <input type="checkbox"/> Other:	<input checked="" type="checkbox"/> Circular <input type="checkbox"/> Elliptical <input type="checkbox"/> Box <input type="checkbox"/> Other:	<input checked="" type="checkbox"/> Single <input type="checkbox"/> Double <input type="checkbox"/> Triple <input type="checkbox"/> Other:	Diameter/Dimensions: 8" and 30"	In Water: <input checked="" type="checkbox"/> No <input type="checkbox"/> Partially <input type="checkbox"/> Fully With Sediment: <input checked="" type="checkbox"/> No <input type="checkbox"/> Partially <input type="checkbox"/> Fully
Open drainage (swale/ditch)	<input type="checkbox"/> Concrete <input type="checkbox"/> Earthen <input type="checkbox"/> rip-rap <input type="checkbox"/> Other:	<input type="checkbox"/> Trapezoid <input type="checkbox"/> Parabolic <input type="checkbox"/> Other:		Depth: Top Width: Bottom Width:	

Section 3: Physical Indicators

INDICATOR	CHECK if Present	DESCRIPTION	COMMENTS
Outfall Damage	<input type="checkbox"/>	<input type="checkbox"/> Spalling, Cracking or Chipping <input type="checkbox"/> Peeling Paint <input type="checkbox"/> Corrosion	Vegetation should be cleared in summer
Deposits/Stains	<input type="checkbox"/>	<input type="checkbox"/> Oily <input type="checkbox"/> Flow Line <input type="checkbox"/> Paint <input type="checkbox"/> Other:	
Abnormal Vegetation	<input type="checkbox"/>	<input type="checkbox"/> Excessive <input type="checkbox"/> Inhibited	
Poor pool quality	<input type="checkbox"/>	Odors Colors Floatables Oil Sheen Suds Excessive Algae Other:	
Pipe algae/growth	<input type="checkbox"/>	Brown Orange Green Other:	
Do physical indicators suggest an illicit discharge is present (Y/N):			

Flow Present?	Yes	No	If No, Skip to Section 7 and Close Illicit Discharge Investigation
Flow Description	Trickle	Moderate	Substantial

Section 4: Physical Indicators (Flowing Outfalls Only)

INDICATOR	CHECK if Present	DESCRIPTION	RELATIVE SEVERITY INDEX (1-3)		
Odor	<input type="checkbox"/> <input type="checkbox"/> <input type="checkbox"/>	<input type="checkbox"/> Sewage Rancid/sour <input type="checkbox"/> Sulfide Petroleum/gas <input type="checkbox"/> <input type="checkbox"/> Laundry Other:	1-Faint <input type="checkbox"/>	2 – Easily detected <input type="checkbox"/>	3 – Noticeable from a distance
Color (color chart)	<input type="checkbox"/> <input type="checkbox"/> <input type="checkbox"/> <input type="checkbox"/>	Clear <input type="checkbox"/> Brown <input type="checkbox"/> Gray <input type="checkbox"/> Yellow <input type="checkbox"/> Green <input type="checkbox"/> Orange/Red Multi-Color <input type="checkbox"/> Other:	1-Faint colors in sample bottle <input type="checkbox"/>	2 – Clearly visible in sample bottle <input type="checkbox"/>	3 – Clearly visible in outfall flow
Turbidity	<input type="checkbox"/>	See severity	1-Slight cloudiness	2 – Cloudy	3 – Opaque
Floatables -Does Not Include Trash!!	<input type="checkbox"/>	Sewage Suds and Foam Petroleum (oil sheen) Grease Other:	1-Few/slight; origin not obvious	2 – Some; indications of origin	3 - Some; origin clear
Do physical indicators (flowing) suggest an illicit discharge is present (Y/N):					

Section 5: Any Non-Illicit Discharge Concerns (e.g., trash or needed infrastructure repairs)?















Section 1: Background Data

Subwatershed:	Outfall ID:
Date: 3/1/23	Time (Military): 11:00
Temperature: 40	Inspector(s): MB
Previous 48 Hours Precipitation: >0.1"	Photo's Taken (Y/N) Y If yes, Photo Numbers: see file
Land Use in Drainage Area (Check all that apply): <input type="checkbox"/> Open Space <input type="checkbox"/> Industrial x Institutional Memorial Park Dry Bottom Pond <input type="checkbox"/> Residential <input type="checkbox"/> Commercial Other: _____ Known Industries: _____	

Section 2: Outfall Description

LOCATION	MATERIAL	SHAPE		DIMENSIONS (IN.)	SUBMERGED
Storm Sewer (Closed Pipe)	<input checked="" type="checkbox"/> RCP <input type="checkbox"/> CMP <input type="checkbox"/> PVC <input type="checkbox"/> HDPE <input type="checkbox"/> Steel <input type="checkbox"/> Clay/Draintile <input type="checkbox"/> Other:	<input checked="" type="checkbox"/> Circular <input type="checkbox"/> Elliptical <input type="checkbox"/> Box <input type="checkbox"/> Other:	<input checked="" type="checkbox"/> Single <input type="checkbox"/> Double <input type="checkbox"/> Triple <input type="checkbox"/> Other:	Diameter/Dimensions: 12"	In Water: <input checked="" type="checkbox"/> No <input type="checkbox"/> Partially <input type="checkbox"/> Fully With Sediment: <input checked="" type="checkbox"/> No <input type="checkbox"/> Partially <input type="checkbox"/> Fully
Open drainage (swale/ditch)	<input type="checkbox"/> Concrete <input type="checkbox"/> Earthen <input type="checkbox"/> rip-rap <input type="checkbox"/> Other:	<input type="checkbox"/> Trapezoid <input type="checkbox"/> Parabolic <input type="checkbox"/> Other:		Depth: Top Width: Bottom Width:	

Section 3: Physical Indicators

INDICATOR	CHECK if Present	DESCRIPTION	COMMENTS
Outfall Damage	<input type="checkbox"/>	<input type="checkbox"/> Spalling, Cracking or Chipping <input type="checkbox"/> Peeling Paint <input type="checkbox"/> Corrosion	
Deposits/Stains	<input type="checkbox"/>	<input type="checkbox"/> Oily <input type="checkbox"/> Flow Line <input type="checkbox"/> Paint <input type="checkbox"/> Other:	
Abnormal Vegetation	<input type="checkbox"/>	<input type="checkbox"/> Excessive <input type="checkbox"/> Inhibited	
Poor pool quality	<input type="checkbox"/>	Odors Colors Floatables Oil Sheen Suds Excessive Algae Other:	
Pipe algae/growth	<input type="checkbox"/>	Brown Orange Green Other:	
Do physical indicators suggest an illicit discharge is present (Y/N):			

Flow Present?	Yes	No	If No, Skip to Section 7 and Close Illicit Discharge Investigation
Flow Description	Trickle	Moderate	Substantial

Section 4: Physical Indicators (Flowing Outfalls Only)

INDICATOR	CHECK if Present	DESCRIPTION	RELATIVE SEVERITY INDEX (1-3)		
Odor	<input type="checkbox"/> <input type="checkbox"/> <input type="checkbox"/>	<input type="checkbox"/> Sewage Rancid/sour <input type="checkbox"/> Sulfide Petroleum/gas <input type="checkbox"/> <input type="checkbox"/> Laundry Other:	1-Faint <input type="checkbox"/>	2 – Easily detected <input type="checkbox"/>	3 – Noticeable from a distance
Color (color chart)	<input type="checkbox"/> <input type="checkbox"/> <input type="checkbox"/> <input type="checkbox"/>	Clear <input type="checkbox"/> Brown <input type="checkbox"/> Gray <input type="checkbox"/> Yellow <input type="checkbox"/> Green <input type="checkbox"/> Orange/Red Multi-Color <input type="checkbox"/> Other:	1-Faint colors in sample bottle <input type="checkbox"/>	2 – Clearly visible in sample bottle <input type="checkbox"/>	3 – Clearly visible in outfall flow
Turbidity	<input type="checkbox"/>	See severity	1-Slight cloudiness	2 – Cloudy	3 – Opaque
Floatables -Does Not Include Trash!!	<input type="checkbox"/>	Sewage Suds and Foam Petroleum (oil sheen) Grease Other:	1-Few/slight; origin not obvious	2 – Some; indications of origin	3 - Some; origin clear
Do physical indicators (flowing) suggest an illicit discharge is present (Y/N):					

Section 5: Any Non-Illicit Discharge Concerns (e.g., trash or needed infrastructure repairs)?









Water Quality

Visual Inspections

6/12/22
Martins Ditch



6/12/22
Route 64



6/12/22
Route 23



7/1/22

Martins Ditch



7/1/22
Route 64



7/1/22
Route 23



7/15/22
Martins Ditch



7/15/22
Route 64



7/15/22
Route 23



8/19/22
Martins Ditch



8/19/22
Route 64



8/19/22
Route 23



11/23/22
Martins Ditch



11/23/22
Route 64
At Golf Course Bridge



11/23/22
Route 23



1/13/23
Martins Ditch



1/13/23
Route 64
At Golf Course Bridge



1/13/23
Route 23



CITY OF SYCAMORE
2022 BUILDING PERMITS YTD

PERMIT NO	Pt	ISSUED	ADD #	DIR	ST NAME	NAME	IMPROVEMENT INFO	ZONE CODE	PARCEL #								
14356		05/18/22	713	S	MAIN ST	MASON PROPERTIES / JIM MASON	10-UNIT APARTMENT BUILDING	R3	06-32-456-023								
14553		05/05/22	521 & 523		ANJALI CT	YOUSSI CUSTOM HOMES, LLC	2 FAMILY RESIDENTIAL	R2	06-31-326-009								
14984		05/27/22	529-531		ANJALI CT	YOUSSI CUSTOM HOMES, LLC	2 FAMILY RESIDENTIAL - DUPLEX	R2	06-31-326-010								
15141		09/06/22	506-508		ANJALI CT	YOUSSI CUSTOM HOMES, LLC	2-UNIT DUPLEX	R2	06-31-327-010								
15142		09/06/22	514-516		ANJALI CT	YOUSSI CUSTOM HOMES, LLC	2-UNIT DUPLEX	R2	06-32-327-009								
15143		09/06/22	522-524		ANJALI CT	YOUSSI CUSTOM HOMES, LLC	2-UNIT DUPLEX	R2	06-31-327-008								
15144		09/06/22	530-532		ANJALI CT	YOUSSI CUSTOM HOMES, LLC	2-UNIT DUPLEX	R2	06-32-327-007								
15146		09/21/22	2207-2209		CONCORD DR	JOHN CASTLE BUILDERS, LLC	2-UNIT DUPLEX	R2	06-20-280-006								
15145		09/21/22	2239-2241		CONCORD DR	JOHN CASTLE BUILDERS, LLC	2-UNIT DUPLEX	R2	06-20-280-002								
14845		03/10/22	12,14,16 & 18		BRIDEN LN	SOLID CONSTRUCTION SERVICES, INC.	4-UNIT CONDOMINIUM	R3	06-29-477-019								
14802		02/03/22	62, 64, 66, 68		BRIDEN LN	SOLID CONSTRUCTION SERVICES, INC.	4-UNIT CONDOMINIUM	R3	06-29-477-014								
14713		03/24/22	530, 532, 534, 536 & 538		AMHERST DR	WORTHINGTON ENTERPRISES, LTD	5-UNIT TOWNHOME	R3	06-21-428-011								
14354		05/18/22	701	S	MAIN ST	MASON PROPERTIES / JIM MASON	9-UNIT APARTMENT BUILDING	R3	06-32-456-023								
14355		05/18/22	707	S	MAIN ST	MASON PROPERTIES / JIM MASON	9-UNIT APARTMENT BUILDING	R3	06-32-456-023								
14827		03/18/22	2175		OAKLAND DR	WEAVER CONSTRUCTION, INC.	ADDITION - COMMERCIAL	C3	08-12-278-001								
15157	B	1/3/2023	1705		MEDITERRANEAN DR	ICEBERG PARTNERS, LLC	ADDITIONAL FIXTURES FOR INTERIOR BUILDING / AMENDED PLANS	C3	09-06-398-004								
15011		10/26/22	421	N	CALIFORNIA ST	COMPOSITION CONSTRUCTION, INC. / INNOVATIVE GROWERS	ADDITION-INDUSTRIAL	M2	06-32-126-002								
15002		06/08/22	725	E	CLOVERLN DR	ANDERSON, RIC	ADDITION-RESIDENTIAL / GREENHOUSE	R1	09-04-102-007								
14805		02/14/22	1013		BERKSHIRE CT	NATIONAL ENERGY CONTRACTORS, INC.	ADDITION-RESIDENTIAL / SUNROOM	R1	09-06-234-016								
14936		05/11/22	917	E	NOTTINGHAM RD	NATIONAL ENERGY CONTRACTORS, INC.	ADDITION-RESIDENTIAL / SUNROOM	R1	09-05-229-009								
14514		06/18/21	435		AIRPORT RD	WILLIAM CHARLES CONSTRUCTION COMPANY / SYCAMORE PARK DISTRICT	BASEBALL COMPLEX/SHELTER	PARK	09-04-226-006								
14860	B	07/08/22	2321		STRATFORD LN	CHAMPION BUILDERS	BASEMENT	R1	06-20-276-012								
15309		2/10/2023	1028		LONDON CT	LUKE BUTLER IMPROVEMENTS	BASEMENT EGRESS WINDOW	R1	09-06-224-012								
14978		05/24/22	535		DEKALB AV	CITY OF SYCAMORE POLICE DEPARTMENT	BOLLARDS/PLANTER INSTALL	PUB	06-32-326-011								
15162		09/07/22	940	E	STATE ST	SYCAMORE PARK DISTRICT	BRIDGE #1 REPLACEMENT	PARK	06-33-376-002								
14855		04/25/22	220		LUCAS ST	220 LUCAS STREET, LLC (WEAVER CONSTRUCTION)	COMMERCIAL - BUILDING SHELL	M1	06-32-203-010								
15157		12/01/22	1705		MEDITERRANEAN DR	ICEBERG PARTNERS, LLC	COMMERCIAL BUILDING	C3	09-06-398-004								
15200		2/8/2023	755		FOXPOINTE DR	JARED KENYON / KIMLEY-HORN	COMMERCIAL BUILDING	C3	09-06-201-007								
15235		2/6/2023	571	S	PEACE RD	BUILTECH SERVICES, LLC / BELLE TIRES	COMMERCIAL BUILDING	C3	06-31-300-013								
15251		11/17/22	2670		DEKALB AV	PAPPAS DEVELOPMENT, LLC	COMMERCIAL BUILDOUT	C3	08-12-277-036								
15191		10/21/22	218		LUCAS ST	BERO, JASON for JOE BERO & SONS	COMMERCIAL BUILDOUT	M1	06-32-203-009								
14771		02/11/22	661	S	PEACE RD	MIDWEST FACILITIES & CONSTRUCTION	COMMERCIAL BUILD-OUT	C3	06-31-377-001								
15190		11/04/22	220		LUCAS ST	WEAVER CONSTRUCTION, INC.	COMMERCIAL BUILD-OUT	M1	06-32-203-010								
14843		03/08/22	203		ASHWOOD DR	JOEL DAVIDSON SERVICES for LISA SZYMANSKI	DECK	R1	06-28-326-014								
14965		05/16/22	217		BRIAN ST	SAUBER, TOM	DECK	R1	06-28-178-013								
15005		06/13/22	1303		CAMDEN CT	ANDERSON, DANE	DECK	R1	09-06-225-005								
15154		09/01/22	2261	S	COVENTRY CIR	JOEL DAVIDSON SERVICES for STARKS & KALEIO SMITH	DECK	R1	06-21-276-012								
14779		01/13/22	369		ELI BARNES CT	ESPOSITO, KATIE for WALTER & JOYCE KOTVAN	DECK	R1	06-21-377-027								
15158		09/02/22	907		ESTHER AV	WARREN, MICHAEL	DECK	R1	06-31-426-029								
15255		11/28/22	727		FREED RD	PENNY LANE DECKS	DECK	R1	06-29-104-020								
15039		06/23/22	359	E	HIGH ST	CARLSON, JAYME	DECK	R1	06-32-432-025								
14992		06/02/22	366		HOME ST	EGGLESTON, DAVE	DECK	R1	06-32-479-012								
14901		04/13/22	1856		HUCKLEBERRY LN	MEDINA, JAIME CAMACHO	DECK	R1	08-01-401-022								
14844		03/08/22	332		MERRY OAKS DR	JOEL DAVIDSON SERVICES for JEREMY & MELISSA COX	DECK	R1	06-20-476-008								
15113		08/09/22	1920		NATIONAL ST	MATTHEWS, BRIAN for BILLIE MATTHEWS	DECK	R1	06-21-438-003								
14996		06/03/22	925		NOTTINGHAM RD	EDIE, KEVIN	DECK	R1	09-05-229-010								
15153		09/01/22	830		STEVENS AV	JOEL DAVIDSON SERVICES for CHRIS HAWK	DECK	R1	06-31-479-003								
15088		07/28/22	325		VIKING DR	BORYLA, RONALD	DECK	R1	06-20-425-010								
14878		04/04/22	1331	N	YORKSHIRE DR	HORST BUILDERS, INC.	DECK	R1	09-06-252-007								

CITY OF SYCAMORE
2022 BUILDING PERMITS YTD

PERMIT NO	Pt	ISSUED	ADD #	DIR	ST NAME	NAME	IMPROVEMENT INFO	ZONE CODE	PARCEL #								
15018		06/16/22	417		CHARLES ST	STOUGHTON, CHRIS	DECK	R2	06-32-378-022								
15173		10/02/22			DEKALB AV	PALM, CARL	DECK	R2	06-32-309-022								
14920		04/26/22	321	S	LOCUST ST	CULTON, RANDY	DECK	R2	06-32-433-014								
14896		04/13/22	345	E	HIGH ST	PERSONETTE, GARY	DECK AND POOL HEATER	R1	06-32-432-020								
15210		12/08/22	1573		BETHANY RD	FRANK MINNIS	DECK/PORCH	R1	09-06-451-028								
15161		09/07/22	822		DEKALB AV	SHEAHAN, RICH	DECKS	R1	06-32-307-012								
14952		05/10/22	421	N	CALIFORNIA ST	O'DONNELL EXCAVATING & TRUCKING	DEMO - 3 BUILDINGS	M2	06-32-211-001								
15065		07/13/22	445		SOMONAUK ST	DOOR PROPERTIES, LLC for MARK ANDERSON	DEMOLITION OF GARAGE & DECK	R2	063-24-010-015								
14975		05/25/22	420	E	SYCAMORE ST	BORDOZI, KRISTIN & SCOTT	DETACHED GARAGE	R1	09-33-153-009								
14884		04/06/22	445	W	EXCHANGE ST	BALENTYNE, PATRICK	DETACHED GARAGE	R2	06-32-129-031								
14895		04/13/22			NE CORNER - RT. 23 & MT. HUNGER RD	SOLID CONSTRUCTION SERVICES, INC.	DIRT STOCKPILE	R3	06-29-427-004								
14950		05/11/22	1233		TOWNSEND ST	TIP TOP ROOFING & CONSTRUCTION for JAN BERNING	GARAGE - DETACHED	R1	09-05-255-011								
14806		02/04/22	440		STARK AV	PATTON, JEFF	GARAGE-DETACHED	R3	06-32-329-019								
14806		02/04/22	440		STARK AV	PATTON, JEFF	GARAGE-DETACHED	R3	06-32-329-019								
14514	B	10/05/21	435		AIRPORT RD	WILLIAM CHARLES CONSTRUCTION COMPANY / SYCAMORE PARK DISTRICT	GAZEBO	PARK	09-04-226-006								
15151		09/06/22	531	E	SYCAMORE ST	LOVETT, SHANNON	GRAVEL PARKING LOT & COMPENSATORY STORAGE	M1	06-33-152-020								
15012		10/26/22	421	N	CALIFORNIA ST	COMPOSITION CONSTRUCTION, INC. / INNOVATIVE GROWERS	INDUSTRIAL BUILDING	M2	06-32-126-002								
14778		04/11/22	1690		AFTON RD	SILVERTHORNE DEVELOPMENT	INDUSTRIAL/ OFFICE BUILDING	M2	09-06-427-021								
15273		12/12/22	630		PLAZA DR	HALL MECHANICAL, INC.	INSTALL 3 RPZ VALVE AND 5 EXPANSION TANKS	C3	06-31-451-015								
14993		06/03/22	1825		LUTHER LOWELL LN	BUSHNELL, MARK	INSTALLATION OF ELECTRICAL SERVICE IN GARAGE	R1	06-21-376-018								
14840		03/07/22	807		HILLCREST DR	OLSEN PLUMBING for OLIVIA LASCHOB	PLUMBING - SANITARY REPAIR	R1	06-31-479-011								
14773		01/03/22	144		VISTA TERRACE	ROTO ROOTER SERVICES	PLUMBING - SANITARY REPAIR	R1	06-33-157-004								
15271		02/07/22	504	S	MAIN ST	IL SEWER & DRAIN, INC. for CARLOS DOMINGUEZ	PLUMBING - SANITARY SEWER REPAIR/REPLACE	R2	06-32-454-001								
15040		07/01/22	215	W	ELM ST	MATEKAITIS, KAYLIN	PLUMBING ALTERATION - INSTALL HAND SINK	C2	06-32-259-012								
14873		03/31/22	661	S	PEACE RD	AQUA DESIGNS, INC.	PLUMBING ALTERATION - INSTALL LAW IRRIGATION SYSTEM	C3	06-31-377-001								
15060		07/08/22	760		FAIRWAY LN	EVERGREEN IRRIGATION for JOHN MOULTON	PLUMBING ALTERATION - INSTALL LAWN IRRIGATION SYSTEM	R1	09-04-171-036								
15244		11/07/22	1801		DEKALB AV	CERONI PIPING COMPANY	PLUMBING ALTERATION - REPLACE RPZ ON WATER SERVICE	R1	08-01-401-022								
14847		03/07/22	350		GRANT ST	MOST PLUMBING & MECHANICAL, INC. for HOUSING AUTHORITY OF DEKALB COUNTY	PLUMBING ALTERATION - REPLACE WATER AND DWV PIPING	R3	06-32-182-010								
14868		03/25/22	1041		DEKALB AV	AMERICAN TRENCHLESS for CLARK CUBBAGE	PLUMBING ALTERATION - SANITARY SEWER REPAIR	R1	06-31-465-992								
14772		01/03/22	105	E	KERR ST	C-H PLUMBING	PLUMBING ALTERATION - SANITARY SEWER REPAIR	R1	09-05-253-010								
15237		10/27/22	1005		REPUBLIC AV	HERMES, KIM	PLUMBING ALTERATION - SANITARY SEWER REPAIR	R1	06-22-326-002								
15281		02/19/22	229		CHARLES ST	1ST RESPONSE PLUMBING & DRAIN	PLUMBING ALTERATION - SANITARY SEWER REPAIR	R2	06-32-452-007								
15033		06/22/22	1515		PINE ST	ROTO ROOTER SERVICES for LUANN CULLISON	PLUMBING ALTERATION - SANITARY SEWER REPAIR	R2	08-01-253-010								
15282		02/19/22	215		NORTH AV	ALL CLEAR PLUMBING WORKS	PLUMBING ALTERATION - SANITARY SEWER REPAIR	R3	06-32-201-011								
14782		01/10/22	1348		FLORENCE DR	1ST RESPONSE PLUMBING & DRAIN	PLUMBING ALTERATION - SANITARY SEWER REPAIR	UNINC	06-29-277-005								
15056		07/01/22	1635		OAKLAND DR	ROTO ROOTER SERVICES	PLUMBING ALTERATION - SANITARY SEWER REPAIR	UNINC	06-29-202-007								
15277		12/16/22	179		THOMAS DR	AMERICAN TRENCHLESS	PLUMBING ALTERATION - SANITARY SEWER REPAIR	UNINC	06-29-228-012								
15291		1/13/2023	660		SOUTH AV	SOTO, RAY	PLUMBING ALTERATION - SANITARY SEWER REPAIR	R2	910201021								
15292		1/17/2023	1738		BROCK CIRCLE	C&H PLUMBING	PLUMBING ALTERATION - SANITARY SEWER REPAIR	R3	631367059								
15303		2/1/2023	1136		FREED RD	AMERICAN TRENCHLESS	PLUMBING ALTERATION - SANITARY SEWER REPAIR	R1	06-30-280-013								
15294		1/18/2023	1967		DEKALB AV	C&H PLUMBING	PLUMBING ALTERATION - SANITARY SEWER REPAIR - ADD MANHOLE	C3	801451024								
15278		12/16/22	330		PLEASANT ST	AMERICAN TRENCHLESS	PLUMBING ALTERATION - SANITARY SEWER REPAIR / LINING	R1	06-33-152-004								
15325		2/27/2023	1618		PINE TRAIL	1ST RESPONSE PLUMBING & DRAIN	PLUMBING ALTERATION - SANITARY SEWER REPAIR IN STREET	UNINC	06-29-201-006								
15063		07/11/22	404	W	STATE ST	BBP PLUMBING for 711	PLUMBING ALTERATION - SANITARY SEWER REPAIR/REPLACEMENT	C2	06-32-257-005								
15181		9/27/2022	417	E	HIGH ST	ADVANTAGE PLUMBING	PLUMBING ALTERATION - SANITARY SEWER REPAIR/REPLACEMENT	R1	06-33-304-017								
14987		05/31/22	363	E	LINCOLN ST	HAMP PLUMBING	PLUMBING ALTERATION - SANITARY SEWER REPAIR/REPLACEMENT	R1	06-32-479-022								
15111		08/05/22	642		MEADOW LN	AQUA CITY PLUMBING	PLUMBING ALTERATION - SANITARY SEWER REPAIR/REPLACEMENT	R1	06-31-481-005								
15150		08/31/22	642		MEADOW LN	AQUA CITY PLUMBING	PLUMBING ALTERATION - SANITARY SEWER REPAIR/REPLACEMENT	R1	06-31-481-005								

CITY OF SYCAMORE
2022 BUILDING PERMITS YTD

PERMIT NO	Pt	ISSUED	ADD #	DIR	ST NAME	NAME	IMPROVEMENT INFO	ZONE CODE	PARCEL #								
14941		05/05/22	513		WEST ST	SUBURBAN SEWER & SEPTIC	PLUMBING ALTERATION - SANITARY SEWER REPAIR/REPLACEMENT	R1	06-31-427-010								
15129		08/16/22	1743		BROOKHILL LN	ROTO ROOTER SERVICES	PLUMBING ALTERATION - SANITARY SEWER REPAIR/REPLACEMENT	R2	09-06-178-011								
15149		08/31/22	1028		COMMERCIAL ST	AQUA CITY PLUMBING	PLUMBING ALTERATION - SANITARY SEWER REPAIR/REPLACEMENT	R2	09-05-207-006								
14879		04/01/22	816	S	CROSS ST	HAROLD CONSTRUCTION for DARREN GLICKENSTRIN	PLUMBING ALTERATION - SANITARY SEWER REPAIR/REPLACEMENT	R2	06-32-378-002								
15029		06/21/22	130		GREELEY ST	1ST RESPONSE PLUMBING & DRAIN	PLUMBING ALTERATION - SANITARY SEWER REPAIR/REPLACEMENT	R2	06-32-179-005								
15069		07/13/22	235	E	SYCAMORE ST	1ST RESPONSE PLUMBING & DRAIN	PLUMBING ALTERATION - SANITARY SEWER REPAIR/REPLACEMENT	R2	06-32-276-009								
14871		03/28/22	405		HIGH ST	HAMP PLUMBING	PLUMBING ALTERATION - SANITARY SEWER REPAIR/REPLACEMENT	R3	06-32-401-008								
15056		07/05/22	1635		OAKLAND DR	ROTO-ROOTER SERVICES CO	PLUMBING ALTERATION - SANITARY SEWER REPAIR/REPLACEMENT	UNINC	06-29-202-007								
15120		08/12/22	496		WOODLAND TRAIL	C&H PLUMBING	PLUMBING ALTERATION - SANITARY SEWER REPAIR/REPLACEMENT	UNINC	06-29-205-012								
15295		1/20/2023	521		WOODLAND ST	AMERICAN TRENCHLESS for RAY CARLSON	PLUMBING ALTERATION - SANITARY SEWER REPAIR	UNINC	06-29-204-007								
14926		04/29/22	1860		PERRY CT	C&H PLUMBING	PLUMBING ALTERATION - SANITARY SEWER REPLACEMENT	R1	09-05-380-011								
15075		07/19/22	1019		MEADOW LN	HAMP PLUMBING	PLUMBING ALTERATION - SANITARY SWER REPAIR/REPLACEMENT	R3	06-06-228-019								
15051		06/30/22	1343		JANET ST	C&H PLUMBING for OPPORTUNITY HOUSE	PLUMBING ALTERATION - WATER SERVICE FULL REPLACEMENT 2"	R1	06-29-154-011								
15052		06/30/22	140		WENDY ST	C&H PLUMBING for OPPORTUNITY HOUSE	PLUMBING ALTERATION - WATER SERVICE FULL REPLACEMENT 2"	R1	06-28-155-006								
15171		09/14/22	1618		PEBBLEWOOD CT	C&H PLUMBING	PLUMBING ALTERATION - WATER SERVICE REPAIR	R2	09-06-180-046								
15035		06/22/22	905		ALBERT AV	C&H PLUMBING for BRIAN CULLISON	PLUMBING ALTERATION - WATER SERVICE REPAIR/REPLACEMENT	R1	06-32-428-019								
15115		08/10/22	1366		JANET ST	C&H PLUMBING	PLUMBING ALTERATION - WATER SERVICE REPLACEMENT B-BOX TO HOUSE	R1	06-29-154-017								
14788		01/14/22	337	E	STATE ST	AMERICAN TRENCHLESS	PLUMBING ALTERATION- SANITARY SEWER REPAIR / LINING	C2	06-32-282-013								
14909		04/19/22	324		ORCHARD LN	BRYAN KUHN PLUMBING for TRUDY WHITE	PLUMBING ALTERATION-SANITARY SEWER REPAIR	R1	09-05-134-007								
15288		1/12/2023	150		THOMAS DR	AMERICAN TRENCHLESS	PLUMBING ALTERATION-SANITARY SEWER REPAIR	UNINC	629277013								
14809		02/07/22	905		ALBERT AV	C&H PLUMBING	PLUMBING ALTERATION-WATER SERVICE REPAIR	R1	06-31-428-019								
15216		10/18/22	1008		COMMERCIAL ST	MATARAGAS, MIKE & HEATHER	PLUMBING ALTERATION-WATER SERVICE REPAIR	R2	09-05-207-002								
14824		02/21/22	330		TERRACE DR	CENTER GUARD PLUMBING	PLUMBINGALTERATION - SANITARY SEWER REPAIR	R1	06-33-352-007								
14946		05/06/22	1870		PERRY CT	C&H PLUMBING, INC. for LISA CASSON	PLUMBING-ALTERATION - SANITARY SEWER REPAIR/REPLACEMENT	R1	09-05-380-012								
14957		05/12/22	415		MAPLEWOOD DR	C&H PLUMBING for NICK MIDLOCK	PLUMBING-ALTERATION / SANITARY SEWER REPAIR/REPLACEMENT	UNINC	06-29-253-003								
14973		05/19/22	927		ARVLE CIRCLE	AMERICAN TRENCHLESS TECHNOLOGY for DAN PAVELICH	PLUMBING-ALTERATION-CLEAN OUT	R3	06-28-355-090								
14974		05/19/22	334		GARDEN CT	CHRIS HARTNESS for BRUCE KERBLE	PLUMBING-ALTERATION-SANITARY SEWER REPAIR/REPLACEMENT	R1	09-05-133-006								
14897 DA		6/28/2022	325	N	SACRAMENTO ST	MERCHANT, MIKE	PLUMBING-LEAD WATER SERVICE REPLACEMENT PROJECT	C1	06-32-129-013								
14897 J		4/13/2022	337	W	EXCHANGE ST	HENIGAN, KATIE	PLUMBING-LEAD WATER SERVICE REPLACEMENT PROJECT	C2	06-32-251-009								
14897 DO		7/21/2022	204	S	MAIN ST	DEVITO, KAREN D.	PLUMBING-LEAD WATER SERVICE REPLACEMENT PROJECT	C2	06-32-430-001								
14897 R		4/13/2022	120	N	SACRAMENTO ST	TIGGELAAR, HAYES	PLUMBING-LEAD WATER SERVICE REPLACEMENT PROJECT	C2	06-32-178-003								
14897 BQ		5/5/2022	230	N	SACRAMENTO ST	STEINBIS, MIKE	PLUMBING-LEAD WATER SERVICE REPLACEMENT PROJECT	C2	06-32-251-001								
14897 BR		5/5/2022	342	N	SACRAMENTO ST	OPPORTUNITY HOUSE	PLUMBING-LEAD WATER SERVICE REPLACEMENT PROJECT	C2	06-32-204-005								
14897 EU		8/17/2022	212	E	STATE ST	VAZQUEZ, JUAN G.	PLUMBING-LEAD WATER SERVICE REPLACEMENT PROJECT	C2	06-32-285-002								
14897 EW		8/17/2022	222	E	STATE ST	TURNER, TODD	PLUMBING-LEAD WATER SERVICE REPLACEMENT PROJECT	C2	06-32-427-001								
14897 EV		8/17/2022	228	E	STATE ST	TALLITSCH, JEFF	PLUMBING-LEAD WATER SERVICE REPLACEMENT PROJECT	C2	06-32-427-002								
14897 BG		5/5/2022	353	N	MAPLE ST	JENSEN & SON	PLUMBING-LEAD WATER SERVICE REPLACEMENT PROJECT	M1	06-32-205-033								
14897 CP		6/14/2022	118 & 122	W	PAGE ST	WILLIAMS, CAMMILLE	PLUMBING-LEAD WATER SERVICE REPLACEMENT PROJECT	M1	06-32-228-006								
14897 AC		5/3/2022	131		ALMA ST	ORTMAN, RICHARD	PLUMBING-LEAD WATER SERVICE REPLACEMENT PROJECT	R1	06-32-153-006								
14897 ED		7/13/2022	503		CENTER AV	BERO, MICHAEL & JOE	PLUMBING-LEAD WATER SERVICE REPLACEMENT PROJECT	R1	06-32-308-012								
14897 EE		7/13/2022	520		CENTER AV	WEAVER, JACK	PLUMBING-LEAD WATER SERVICE REPLACEMENT PROJECT	R1	06-32-309-013								
14897 CV		6/20/2022	521		CENTER AV	GUSTAFSON, KATHRYN	PLUMBING-LEAD WATER SERVICE REPLACEMENT PROJECT	R1	06-32-308-009								
14897 CJ		6/13/2022	543		CENTER AV	BLECKSCHMIDT, JAMES & ANASATSIA	PLUMBING-LEAD WATER SERVICE REPLACEMENT PROJECT	R1	06-32-308-005								
14897 C		4/13/2022	1148		COMMERICAL ST	DIDIO, ANDY	PLUMBING-LEAD WATER SERVICE REPLACEMENT PROJECT	R1	09-05-254-010								
14897 AK		5/3/2022	622	S	CROSS ST	SCHROEDER, RYAN & MICHELLE	PLUMBING-LEAD WATER SERVICE REPLACEMENT PROJECT	R1	06-32-310-004								
14897 CT		6/14/2022	629	S	CROSS ST	PRENDERGAST, JOHN	PLUMBING-LEAD WATER SERVICE REPLACEMENT PROJECT	R1	06-32-307-016								
14897 AV		5/3/2022	623		EDWARD ST	FINN, SEAN	PLUMBING-LEAD WATER SERVICE REPLACEMENT PROJECT	R1	06-32-307-027								

CITY OF SYCAMORE
2022 BUILDING PERMITS YTD

PERMIT NO	Pt	ISSUED	ADD #	DIR	ST NAME	NAME	IMPROVEMENT INFO	ZONE CODE	PARCEL #								
14897	DL	7/15/2022	631		EDWARD ST	GREEN, MICHELE	PLUMBING-LEAD WATER SERVICE REPLACEMENT PROJECT	R1	06-32-307-026								
14897	CS	6/14/2022	708		EDWARD ST	HANSEN, TODD	PLUMBING-LEAD WATER SERVICE REPLACEMENT PROJECT	R1	06-32-352-012								
14897	AO	5/3/2022	712		EDWARD ST	IRETON, DALE	PLUMBING-LEAD WATER SERVICE REPLACEMENT PROJECT	R1	06-32-352-004								
14897	AR	5/3/2022	432	E	ELM ST	VINCENT, FRANCES	PLUMBING-LEAD WATER SERVICE REPLACEMENT PROJECT	R1	06-33-304-002								
14897	AS	5/3/2022	456	E	ELM ST	ROE, WAYNE	PLUMBING-LEAD WATER SERVICE REPLACEMENT PROJECT	R1	06-33-304-005								
14897	AU	5/3/2022	607		ELMWOOD ST	ZIMNY, STEPHEN	PLUMBING-LEAD WATER SERVICE REPLACEMENT PROJECT	R1	06-32-351-013								
14897	E	4/13/2022	820		ESTHER AV	ELSHOFF, LEE	PLUMBING-LEAD WATER SERVICE REPLACEMENT PROJECT	R1	06-31-428-012								
14897	F	4/13/2022	907		ESTHER AV	WARREN, MICHAEL	PLUMBING-LEAD WATER SERVICE REPLACEMENT PROJECT	R1	06-31-426-002								
14897	N	4/13/2022	312		FAIR ST	GINEMAN, MICHAEL	PLUMBING-LEAD WATER SERVICE REPLACEMENT PROJECT	R1	06-32-306-003								
14897	O	4/13/2022	406		FAIR ST	SCAWINSKI, DANIELLE	PLUMBING-LEAD WATER SERVICE REPLACEMENT PROJECT	R1	06-32-306-006								
14897	AW	5/3/2022	411		FAIR ST	PFUND, KURT	PLUMBING-LEAD WATER SERVICE REPLACEMENT PROJECT	R1	06-32-303-002								
14897	DT	7/26/2022	418		FAIR ST	MANESS, CHRISTOPHER	PLUMBING-LEAD WATER SERVICE REPLACEMENT PROJECT	R1	06-32-206-050								
14897	P	4/13/2022	430		FAIR ST	VICKERS, WILLIAM & KATHY	PLUMBING-LEAD WATER SERVICE REPLACEMENT PROJECT	R1	06-32-306-012								
14897	AX	5/3/2022	706		FOX AV	JOHNSON, DIANE	PLUMBING-LEAD WATER SERVICE REPLACEMENT PROJECT	R1	06-31-479-001								
14897	CR	6/14/2022	317		GRANT ST	MANESS, MARY K.	PLUMBING-LEAD WATER SERVICE REPLACEMENT PROJECT	R1	06-32-181-031								
14897	AY	5/4/2022	418		GRANT ST	RHOADES REAL ESTATE	PLUMBING-LEAD WATER SERVICE REPLACEMENT PROJECT	R1	06-32-180-002								
14897	CK	6/13/2022	422		GRANT ST	MCMILLION, JEFF	PLUMBING-LEAD WATER SERVICE REPLACEMENT PROJECT	R1	06-32-180-001								
14897	DD	7/15/2022	334		HOME ST	WENGER, ALEXANDRA AND KIRK	PLUMBING-LEAD WATER SERVICE REPLACEMENT PROJECT	R1	06-32-479-005								
14897	BA	5/5/2022	344		HOME ST	H&S PROPERTIES, LLC	PLUMBING-LEAD WATER SERVICE REPLACEMENT PROJECT	R1	06-32-479-007								
14897	DN	7/21/2022	229	E	LINCOLN ST	KIRCHMANN, MELISSA	PLUMBING-LEAD WATER SERVICE REPLACEMENT PROJECT	R1	06-32-478-014								
14897	BB	5/5/2022	108	W	LINCOLN ST	BRAZIER, CHRISTY	PLUMBING-LEAD WATER SERVICE REPLACEMENT PROJECT	R1	06-32-456-008								
14897	DC	7/15/2022	112	W	LINCOLN ST	JOHNSON, RALPH D.	PLUMBING-LEAD WATER SERVICE REPLACEMENT PROJECT	R1	06-32-456-019								
14897	DH	7/15/2022	523	S	LOCUST ST	HANDT, HOWARD	PLUMBING-LEAD WATER SERVICE REPLACEMENT PROJECT	R1	06-32-454-009								
14897	Q	4/13/2022	245		LUCAS ST	STALLWORTH, JAMES	PLUMBING-LEAD WATER SERVICE REPLACEMENT PROJECT	R1	06-32-202-033								
14897	BH	5/5/2022	523	N	MAPLE ST	TENANT, JACOB	PLUMBING-LEAD WATER SERVICE REPLACEMENT PROJECT	R1	06-32-202-037								
14897	DV	7/26/2022	329		NORTH AV	STEELE, BRIAN	PLUMBING-LEAD WATER SERVICE REPLACEMENT PROJECT	R1	06-29-451-019								
14897	DU	7/26/2022	333		NORTH AV	MONTAIGUE, THOMAS	PLUMBING-LEAD WATER SERVICE REPLACEMENT PROJECT	R1	06-29-451-018								
14897	BP	5/5/2022	333	E	OTTAWA ST	MACALISTER, MATT	PLUMBING-LEAD WATER SERVICE REPLACEMENT PROJECT	R1	06-32-435-033								
14897	CL	6/13/2022	105	W	RECKITT ST	ROWLAND, MATTHEW	PLUMBING-LEAD WATER SERVICE REPLACEMENT PROJECT	R1	09-05-203-009								
14897	ET	8/17/2022	483	E	STATE ST	GT ASSETS LLC	PLUMBING-LEAD WATER SERVICE REPLACEMENT PROJECT	R1	06-33-301-008								
14897	V	4/13/2022	933		TOWNSEND ST	NIELSEN, JEFF	PLUMBING-LEAD WATER SERVICE REPLACEMENT PROJECT	R1	09-05-202-015								
14897	BY	5/5/2022	1038		TOWNSEND ST	HICKS, NANCY	PLUMBING-LEAD WATER SERVICE REPLACEMENT PROJECT	R1	09-05-205-008								
14897	BZ	5/5/2022	1103		TOWNSEND ST	PASCH, DAVID & JULIE	PLUMBING-LEAD WATER SERVICE REPLACEMENT PROJECT	R1	09-05-251-011								
14897	EH	7/14/2022	1112		TOWNSEND ST	ARNOLD, KYLE	PLUMBING-LEAD WATER SERVICE REPLACEMENT PROJECT	R1	09-05-251-014								
14897	CA	5/6/2022	1214		TOWNSEND ST	TOMLINSON, ROBERT	PLUMBING-LEAD WATER SERVICE REPLACEMENT PROJECT	R1	09-05-256-026								
14897	CB	5/6/2022	210	W	TURNER PL	HOPKINS, GARY & CATHERINE	PLUMBING-LEAD WATER SERVICE REPLACEMENT PROJECT	R1	09-05-202-020								
14897	CE	5/6/2022	1014		WILD ST	SIGLER, LISA	PLUMBING-LEAD WATER SERVICE REPLACEMENT PROJECT	R1	09-05-206-003								
14897	X	4/13/2022	1028		WILD ST	THOMSEN, SCOTT	PLUMBING-LEAD WATER SERVICE REPLACEMENT PROJECT	R1	09-05-206-006								
14897	Y	4/13/2022	1110		WILD ST	SMITH, JEAN	PLUMBING-LEAD WATER SERVICE REPLACEMENT PROJECT	R1	09-05-253-003								
14897	CF	5/6/2022	1133		WILD ST	SMITH, MICHAEL & NICOLE SCOTT	PLUMBING-LEAD WATER SERVICE REPLACEMENT PROJECT	R1	09-05-252-017								
14897	Z	4/13/2022	1137		WILD ST	THOMAS, JOHN & VIOLET MAJOR	PLUMBING-LEAD WATER SERVICE REPLACEMENT PROJECT	R1	09-05-252-018								
14897	CG	5/6/2022	1207		WILD ST	RAMER, ROBERT & ANN	PLUMBING-LEAD WATER SERVICE REPLACEMENT PROJECT	R1	09-05-256-020								
14897	EI	7/14/2022	304	N	CALIFORNIA ST	MATUSZESKI, MICHAEL	PLUMBING-LEAD WATER SERVICE REPLACEMENT PROJECT	R2	06-32-205-016								
14897	AE	5/3/2022	403	S	CALIFORNIA ST	HOPKINS, GARY	PLUMBING-LEAD WATER SERVICE REPLACEMENT PROJECT	R2	06-32-333-014								
14897	AF	5/3/2022	440	S	CALIFORNIA ST	VOGT, RANDALL & JULIE	PLUMBING-LEAD WATER SERVICE REPLACEMENT PROJECT	R2	06-32-410-007								
14897	A	4/13/2022	448	S	CALIFORNIA ST	SABERT, THOMAS	PLUMBING-LEAD WATER SERVICE REPLACEMENT PROJECT	R2	06-32-410-008								
14897	AG	5/3/2022	628		CARLSON ST	THOMPSON, DAN	PLUMBING-LEAD WATER SERVICE REPLACEMENT PROJECT	R2	06-32-381-005								
14897	B	4/13/2022	268		CHARLES ST	SOMSKY, SHELTON	PLUMBING-LEAD WATER SERVICE REPLACEMENT PROJECT	R2	06-32-384-001								
14897	DP	7/21/2022	401		CHARLES ST	BINDER, ROBERT	PLUMBING-LEAD WATER SERVICE REPLACEMENT PROJECT	R2	06-32-378-024								
14897	DQ	7/21/2022	407		CHARLES ST	BERGGREN, EVA	PLUMBING-LEAD WATER SERVICE REPLACEMENT PROJECT	R2	06-32-378-023								
14897	AH	5/3/2022	1024		COMMERCIAL ST	SCHROEDER, TERRY	PLUMBING-LEAD WATER SERVICE REPLACEMENT PROJECT	R2	06-32-381-005								
14897	AI	5/3/2022	149	N	CROSS ST	MENNE, JAYNE	PLUMBING-LEAD WATER SERVICE REPLACEMENT PROJECT	R2	06-32-155-009								

CITY OF SYCAMORE
2022 BUILDING PERMITS YTD

PERMIT NO	Pt	ISSUED	ADD #	DIR	ST NAME	NAME	IMPROVEMENT INFO	ZONE CODE	PARCEL #								
14897	EM	7/29/2022	150	N	CROSS ST	RAY, RYAN	PLUMBING-LEAD WATER SERVICE REPLACEMENT PROJECT	R2	06-32-127-010								
14897	AJ	5/3/2022	236	N	CROSS ST	JACOBSON, ROGER	PLUMBING-LEAD WATER SERVICE REPLACEMENT PROJECT	R2	06-32-127-004								
14897	D	4/13/2022	239	N	CROSS ST	SCIDMORE, RICHARD	PLUMBING-LEAD WATER SERVICE REPLACEMENT PROJECT	R2	06-32-104-014								
14897	AA	4/14/2022	275	N	CROSS ST	DEKALB COUNTY HOUSING AUTHORITY	PLUMBING-LEAD WATER SERVICE REPLACEMENT PROJECT	R2	06-32-104-012								
14897	EA	7/26/2022	710	S	CROSS ST	DOWAT, ANGELA	PLUMBING-LEAD WATER SERVICE REPLACEMENT PROJECT	R2	06-32-355-002								
14897	AL	5/3/2022	1051	S	CROSS ST	MUEHLBAUER, ALEXIS	PLUMBING-LEAD WATER SERVICE REPLACEMENT PROJECT	R2	09-05-101-006								
14897	AM	5/3/2022	228		EDWARD ST	ROACH, CLAY	PLUMBING-LEAD WATER SERVICE REPLACEMENT PROJECT	R2	06-32-452-002								
14897	DK	7/15/2022	403		EDWARD ST	BARCZAK, JOAN & JOEL	PLUMBING-LEAD WATER SERVICE REPLACEMENT PROJECT	R2	06-32-376-017								
14897	AN	5/3/2022	415		EDWARD ST	FIGURAY, KENNETH	PLUMBING-LEAD WATER SERVICE REPLACEMENT PROJECT	R2	06-32-376-015								
14897	EB	7/12/2022	432		EDWARD ST	FORCE, JOSH	PLUMBING-LEAD WATER SERVICE REPLACEMENT PROJECT	R2	06-32-378-008								
14897	DW	7/26/2022	254 & 256		EDWARD ST	HOPKINS, GARY	PLUMBING-LEAD WATER SERVICE REPLACEMENT PROJECT	R2	06-32-380-002								
14897	AP	5/3/2022	130	E	ELM ST	SMITH, PETE & PAM	PLUMBING-LEAD WATER SERVICE REPLACEMENT PROJECT	R2	06-32-430-008								
14897	AQ	5/3/2022	303	E	ELM ST	STRAIN, LORI	PLUMBING-LEAD WATER SERVICE REPLACEMENT PROJECT	R2	06-32-428-008								
14897	AT	5/3/2022	473	E	ELM ST	AFFORDALBE PROPERTY INVESTMENTS, LLC	PLUMBING-LEAD WATER SERVICE REPLACEMENT PROJECT	R2	06-33-303-019								
14897	CH	6/13/2022	324	E	EXCHANGE ST	OWENS, TRENT	PLUMBING-LEAD WATER SERVICE REPLACEMENT PROJECT	R2	06-32-282-005								
14897	DR	7/21/2022	421	W	EXCHANGE ST	BLOYD, RUSSELL	PLUMBING-LEAD WATER SERVICE REPLACEMENT PROJECT	R2	06-32-129-027								
14897	AB	4/20/2022	427	W	EXCHANGE ST	CLIFFE, WAYNE & TINA	PLUMBING-LEAD WATER SERVICE REPLACEMENT PROJECT	R2	09-32-128-925								
14897	DJ	7/15/2022	432	W	EXCHANGE ST	BALENTYNE, PATRICK	PLUMBING-LEAD WATER SERVICE REPLACEMENT PROJECT	R2	06-32-177-008								
14897	DX	7/26/2022	433	W	EXCHANGE ST	ARANDA, ALAN	PLUMBING-LEAD WATER SERVICE REPLACEMENT PROJECT	R2	06-32-129-025								
14897	DY	7/26/2022	438	W	EXCHANGE ST	RILEY, MARY	PLUMBING-LEAD WATER SERVICE REPLACEMENT PROJECT	R2	06-32-177-023								
14897	DF	7/15/2022	445	W	EXCHANGE ST	BALENTYNE, PATRICK	PLUMBING-LEAD WATER SERVICE REPLACEMENT PROJECT	R2	06-32-129-031								
14897	DE	7/15/2022	451	W	EXCHANGE ST	BALENTYNE, PATRICK	PLUMBING-LEAD WATER SERVICE REPLACEMENT PROJECT	R2	06-32-129-021								
14897	K	4/13/2022	463	W	EXCHANGE ST	BERG, HARRY & PAT BALENTYNE	PLUMBING-LEAD WATER SERVICE REPLACEMENT PROJECT	R2	06-32-129-020								
14897	L	4/13/2022	468	W	EXCHANGE ST	LADEUR, JOHN	PLUMBING-LEAD WATER SERVICE REPLACEMENT PROJECT	R2	06-32-177-003								
14897	M	4/13/2022	503	W	EXCHANGE ST	POWERS, THOMAS	PLUMBING-LEAD WATER SERVICE REPLACEMENT PROJECT	R2	06-32-127-028								
14897	CQ	6/14/2022	320		GRANT ST	LEIFHEIT, ROBERT E.	PLUMBING-LEAD WATER SERVICE REPLACEMENT PROJECT	R2	06-32-182-007								
14897	DM	7/21/2022	520		GRANT ST	DWYER, ELAINE	PLUMBING-LEAD WATER SERVICE REPLACEMENT PROJECT	R2	06-32-157-006								
14897	BC	5/5/2022	327	N	LOCUST ST	ALEXANDER, ROGER	PLUMBING-LEAD WATER SERVICE REPLACEMENT PROJECT	R2	06-32-229-013								
14897	DG	7/15/2022	321	S	LOCUST ST	COLLIE, TREVOR & DENISE	PLUMBING-LEAD WATER SERVICE REPLACEMENT PROJECT	R2	06-32-433-014								
14897	BD	5/5/2022	414	S	LOCUST ST	MAPES, MAX	PLUMBING-LEAD WATER SERVICE REPLACEMENT PROJECT	R2	06-32-476-003								
14897	BE	5/5/2022	512	S	LOCUST ST	LOPTIEN, ANGELA	PLUMBING-LEAD WATER SERVICE REPLACEMENT PROJECT	R2	06-32-478-002								
14897	CN	6/14/2022	322	S	MAIN ST	TIGGELAAR, RAEGAN	PLUMBING-LEAD WATER SERVICE REPLACEMENT PROJECT	R2	06-32-433-003								
14897	CM	6/14/2022	330	S	MAIN ST	GABLE, EARL	PLUMBING-LEAD WATER SERVICE REPLACEMENT PROJECT	R2	06-32-433-004								
14897	BL	5/5/2022	141		MASON CT	LOCKARD, JAMES	PLUMBING-LEAD WATER SERVICE REPLACEMENT PROJECT	R2	06-32-103-017								
14897	BN	5/5/2022	147		MASON CT	KOCH, MARTIN	PLUMBING-LEAD WATER SERVICE REPLACEMENT PROJECT	R2	06-32-103-014								
14897	BO	5/5/2022	113	E	OTTAWA ST	STAWIARSKI, JANICE	PLUMBING-LEAD WATER SERVICE REPLACEMENT PROJECT	R2	06-32-433-005								
14897	EG	7/13/2022	129	W	OTTAWA ST	HULSEBERG, BARBARA	PLUMBING-LEAD WATER SERVICE REPLACEMENT PROJECT	R2	06-32-409-005								
14897	CI	6/13/2022	458		PARK AV	HOSKINSON, AARON M.	PLUMBING-LEAD WATER SERVICE REPLACEMENT PROJECT	R2	06-32-333-010								
14897	CX	6/20/2022	521		PARK AV	BASKINS, SANDRA	PLUMBING-LEAD WATER SERVICE REPLACEMENT PROJECT	R2	06-32-331-014								
14897	DS	7/26/2022	628		PARK AV	LICHTHARDT, DAN	PLUMBING-LEAD WATER SERVICE REPLACEMENT PROJECT	R2	06-32-380-005								
14897	EL	7/29/2022	719		PARK AV	CAMBEL, NICASIO	PLUMBING-LEAD WATER SERVICE REPLACEMENT PROJECT	R2	06-32-383-020								
14897	EK	7/29/2022	722		PARK AV	WILSON, JAMES	PLUMBING-LEAD WATER SERVICE REPLACEMENT PROJECT	R2	06-32-384-003								
14897	EX	7/28/2022	603		PARK AVE	WATERS, JANET	PLUMBING-LEAD WATER SERVICE REPLACEMENT PROJECT	R2	06-32-379-008								
14897	CZ	6/28/2022	335	N	SACRAMENTO ST	LYNCH, BARBARA E.	PLUMBING-LEAD WATER SERVICE REPLACEMENT PROJECT	R2	06-32-129-034								
14897	BS	5/5/2022	453		SOMONAUK ST	BROOKSHIRE, CHARLES	PLUMBING-LEAD WATER SERVICE REPLACEMENT PROJECT	R2	06-32-410-016								
14897	BT	5/5/2022	679		SOUTH AV	LUNDBERG, DAVID	PLUMBING-LEAD WATER SERVICE REPLACEMENT PROJECT	R2	09-05-126-009								
14897	BU	5/5/2022	410		STARK ST	WOODBURY, MARK	PLUMBING-LEAD WATER SERVICE REPLACEMENT PROJECT	R2	06-32-329-021								
14897	BV	5/5/2022	466		STARK ST	SCHEFFERS, JAMES	PLUMBING-LEAD WATER SERVICE REPLACEMENT PROJECT	R2	06-32-329-010								
14897	EQ	8/16/2022	404	E	STATE ST	WILKINS, TARA	PLUMBING-LEAD WATER SERVICE REPLACEMENT PROJECT	R2	06-32-429-001								

CITY OF SYCAMORE
2022 BUILDING PERMITS YTD

PERMIT NO	Pt	ISSUED	ADD #	DIR	ST NAME	NAME	IMPROVEMENT INFO	ZONE CODE	PARCEL #								
14897	ER	8/16/2022	449	E	STATE ST	PALACIOS, ESTHER	PLUMBING-LEAD WATER SERVICE REPLACEMENT PROJECT	R2	06-33-301-002								
14897	ES	8/17/2022	459	E	STATE ST	START, JOSEPH F.	PLUMBING-LEAD WATER SERVICE REPLACEMENT PROJECT	R2	06-33-301-004								
14897	EP	8/16/2022	474	E	STATE ST	BUTTS-WALL, BLANCHE	PLUMBING-LEAD WATER SERVICE REPLACEMENT PROJECT	R2	06-33-303-010								
14897	EY	8/22/2022	482	E	STATE ST	JIMENEZ, JORGE	PLUMBING-LEAD WATER SERVICE REPLACEMENT PROJECT	R2	06-33-303-011								
14897	T	4/13/2022	311	E	SYCAMORE ST	HAKA, JUSTIN	PLUMBING-LEAD WATER SERVICE REPLACEMENT PROJECT	R2	06-32-276-012								
14897	BX	5/5/2022	331	E	SYCAMORE ST	TAYLOR, JEFFREY & KATRINA	PLUMBING-LEAD WATER SERVICE REPLACEMENT PROJECT	R2	06-32-276-019								
14897	BW	5/5/2022	224	W	SYCAMORE ST	WEAVER, TODD & TRACY	PLUMBING-LEAD WATER SERVICE REPLACEMENT PROJECT	R2	06-32-252-005								
14897	EJ	7/14/2022	241	W	SYCAMORE ST	MICHAELS, JOEY	PLUMBING-LEAD WATER SERVICE REPLACEMENT PROJECT	R2	06-32-205-017								
14897	CC	5/6/2022	218	N	WALNUT ST	READ, DUSTIN	PLUMBING-LEAD WATER SERVICE REPLACEMENT PROJECT	R2	06-32-279-002								
14897	CD	5/6/2022	424		WASHINGTON PL	BEGAY, TRACY	PLUMBING-LEAD WATER SERVICE REPLACEMENT PROJECT	R2	06-32-328-008								
14897	EF	7/13/2022	509		WASHINGTON PL	GREVSKES, JESSICA	PLUMBING-LEAD WATER SERVICE REPLACEMENT PROJECT	R2	06-32-355-008								
14897	W	4/13/2022	512		WASHINGTON PL	PEARSON, KATE	PLUMBING-LEAD WATER SERVICE REPLACEMENT PROJECT	R2	06-32-376-002								
14897	AD	5/3/2022	320	S	CALIFORNIA ST	SWANSON, DIANA & CAROLYN LAW	PLUMBING-LEAD WATER SERVICE REPLACEMENT PROJECT	R3	06-32-407-004								
14897	DZ	7/26/2022	213	W	EXCHANGE ST	SAVOREE, SHELBY	PLUMBING-LEAD WATER SERVICE REPLACEMENT PROJECT	R3	06-32-252-017								
14897	DI	7/15/2022	217	W	EXCHANGE ST	ULRICH, THOMAS P.	PLUMBING-LEAD WATER SERVICE REPLACEMENT PROJECT	R3	06-32-252-016								
14897	G	4/13/2022	233	W	EXCHANGE ST	GIDDINGS, BRIAN & CATHY	PLUMBING-LEAD WATER SERVICE REPLACEMENT PROJECT	R3	06-32-252-014								
14897	H	4/13/2022	239	W	EXCHANGE ST	JIMINEZ, EDGAR & LITA	PLUMBING-LEAD WATER SERVICE REPLACEMENT PROJECT	R3	06-32-252-013								
14897	I	4/13/2022	329	W	EXCHANGE ST	ZIMMERMAN, JOSEPH	PLUMBING-LEAD WATER SERVICE REPLACEMENT PROJECT	R3	06-32-251-010								
14897	AZ	5/4/2022	412	W	HIGH ST	DWIL, LLC	PLUMBING-LEAD WATER SERVICE REPLACEMENT PROJECT	R3	06-32-332-004								
14897	CY	6/20/2022	418	W	HIGH ST	BOEKER, JOHN	PLUMBING-LEAD WATER SERVICE REPLACEMENT PROJECT	R3	06-32-332-003								
14897	BI	5/5/2022	223	S	MAIN ST	MAVEUS, MICHAEL	PLUMBING-LEAD WATER SERVICE REPLACEMENT PROJECT	R3	06-32-405-011								
14897	BJ	5/5/2022	229	S	MAIN ST	CONROY, TRICIA	PLUMBING-LEAD WATER SERVICE REPLACEMENT PROJECT	R3	06-32-405-013								
14897	CO	6/14/2022	314	S	MAIN ST	CODES, RICHARD	PLUMBING-LEAD WATER SERVICE REPLACEMENT PROJECT	R3	06-31-433-002								
14897	CU	6/20/2022	217	N	MAPLE ST	DEWITT, FREDERICK	PLUMBING-LEAD WATER SERVICE REPLACEMENT PROJECT	R3	06-32-307-016								
14897	BF	5/5/2022	303	N	MAPLE ST	MONTOYA-WILKINSON, BLAIR	PLUMBING-LEAD WATER SERVICE REPLACEMENT PROJECT	R3	06-32-205-029								
14897	BK	5/5/2022	210	S	MAPLE ST	BLAHNIK, JIM	PLUMBING-LEAD WATER SERVICE REPLACEMENT PROJECT	R3	06-32-405-003								
14897	EC	7/12/2022	213	N	MARKET ST	GRUETT, MYRON	PLUMBING-LEAD WATER SERVICE REPLACEMENT PROJECT	R3	06-32-252-012								
14897	BM	5/5/2022	236 - 240		MASON CT	GALLI, MARK	PLUMBING-LEAD WATER SERVICE REPLACEMENT PROJECT	R3	06-32-104-005								
14897	EO	8/16/2022	464	E	STATE ST	BUTTS-WALL, BLANCHE	PLUMBING-LEAD WATER SERVICE REPLACEMENT PROJECT	R3	06-33-303-009								
14897	S	4/13/2022	211	W	SYCAMORE ST	BEYER, DWAYNE & VICKIE	PLUMBING-LEAD WATER SERVICE REPLACEMENT PROJECT	R3	06-32-205-028								
14897	U	4/13/2022	330	W	SYCAMORE ST	JACOBSON, ROGER	PLUMBING-LEAD WATER SERVICE REPLACEMENT PROJECT	R3	06-32-251-003								
14797		01/21/22	1834		PARK AV	AQUA CITY PLUMBING	PLUMBING-SEWER REPAIR	R1	09-05-378-007								
14981		05/27/22	546	E	STATE ST	CITY OF SYCAMORE PUBLIC WORKS for JOE MANIACI	PLUMBING-WATER MAIN PROJECT 2022 / WATER SERVICE REPLACEMENT	C1	06-33-306-005								
14982		05/27/22	620	E	STATE ST	CITY OF SYCAMORE PUBLIC WORKS for SYCAMORE PARK DIST.	PLUMBING-WATER MAIN PROJECT 2022 / WATER SERVICE REPLACEMENT	PARK	06-33-376-002								
14891		04/18/22	623	W	BRICKVILLE RD	CLEAR WATER PLUMBING for RORRY HEIDE	PUMBING ALTERATION-WATER SERVICE/B-BOX REPAIR	UNINC	06-29-127-029								
15228		10/24/22	1026		DEKALB AVENUE	SKORA	REPAIR SEWER CLEANOUT	R1	06-31-477-002								
15078		07/26/22	805		ALDEN DR	C&H PLUMBING	JOHNSON, ROD	R1	06-21-279-002								
15017		07/07/22	312		PARK AV	MALU ALULI	RESIDENTIAL ALTERATION - HOUSE REMODEL AND ADDITION	R3	06-32-332-005								
14807		02/03/22	1934		TRUMAN ST	SILVERTHORNE DEVELOPMENT	SANITARY SEWER REPAIR (DONE UNDER WARRANTY)	R1	06-22-328-005								
15248		11/09/22	821		SOMONAUK ST	KEITHER, KAREN	SERVICE UPGRADE	R1	06-32-453-006								
14594		08/17/21	242		ALDEN DR	SHODEEN HOMES, LLC	SINGLE FAMILY RESIDENCE	R1	06-21-180-011								
14800		02/25/22	336		ALDEN DR	SHODEEN HOMES, LLC	SINGLE FAMILY RESIDENCE	R1	06-21-180-007								
14816		02/22/22	344		ALDEN DR	SHODEEN HOMES, LLC	SINGLE FAMILY RESIDENCE	R1	06-21-180-006								
14905		04/22/22	557		BRIGHTON WAY	FINNEY HOMES	SINGLE FAMILY RESIDENCE	R1	06-20-327-006								
14791		01/26/22	475		CLOVERLN DR	SHODEEN HOMES, LLC	SINGLE FAMILY RESIDENCE	R1	09-05-228-009								
15024		06/24/22	840		CLOVERLN DR	SHODEEN HOMES, LLC	SINGLE FAMILY RESIDENCE	R1	09-04-104-010								
15074		07/27/22	338		COLEY PL	CHAMPION BUILDERS	SINGLE FAMILY RESIDENCE	R1	06-20-277-002								
14997		06/14/22	866		CONGRESS AV	RUD CUSTOM HOMES, LLC	SINGLE FAMILY RESIDENCE	R1	06-21-440-003								
14764		01/03/22	911		CONGRESS AV	SILVERTHORNE HOMES	SINGLE FAMILY RESIDENCE	R1	06-21-439-003								

CITY OF SYCAMORE
2022 BUILDING PERMITS YTD

PERMIT NO	Pt	ISSUED	ADD #	DIR	ST NAME	NAME	IMPROVEMENT INFO	ZONE CODE	PARCEL #								
14762		01/03/22	1323		FABIEN DR	SILVERTHORNE HOMES	SINGLE FAMILY RESIDENCE	R1	06-30-279-021								
15026		07/11/22	1348		FABIEN DR	SILVERTHORNE HOMES	SINGLE FAMILY RESIDENCE	R1	06-30-251-025								
15026		07/11/22	1348		FABIEN DR	SILVERTHORNE DEVELOPMENT	SINGLE FAMILY RESIDENCE	R1	06-30-251-025								
15028		07/01/22	1351		FABIEN DR	SILVERTHORNE HOMES	SINGLE FAMILY RESIDENCE	R1	06-30-251-025								
15028		07/01/22	1351		FABIEN DR	SILVERTHORNE DEVELOPMENT	SINGLE FAMILY RESIDENCE	R1	06-30-251-024								
15079		08/01/22	421		FAIRWAY LN	SHODEEN HOMES, LLC	SINGLE FAMILY RESIDENCE	R1	09-05-229-005								
14801		02/07/22	926		GREENLEAF ST	SHODEEN HOMES, LLC	SINGLE FAMILY RESIDENCE	R1	09-04-105-018								
15091		08/01/22	942		GREENLEAF ST	SHODEEN HOMES, LLC	SINGLE FAMILY RESIDENCE	R1	09-04-105-016								
14769		01/03/22	1022		GREENLEAF ST	SHODEEN HOMES, LLC	SINGLE FAMILY RESIDENCE	R1	09-04-105-015								
15185		10/11/22	1038		GREENLEAF ST	SHODEEN HOMES, LLC	SINGLE FAMILY RESIDENCE	R1	09-04-105-013								
14786		01/21/22	1012		JUNIPER DR	SHODEEN HOMES, LLC	SINGLE FAMILY RESIDENCE	R1	09-05-231-030								
15003		06/14/22	1117		JUNIPER DR	SHODEEN HOMES, LLC	SINGLE FAMILY RESIDENCE	R1	09-05-229-021								
14767		01/10/22	1125		JUNIPER DR	SHODEEN HOMES, LLC	SINGLE FAMILY RESIDENCE	R1	09-05-229-005								
14790		01/26/22	1136		JUNIPER DR	SHODEEN HOMES, LLC	SINGLE FAMILY RESIDENCE	R1	09-05-231-020								
15019		06/16/22	446		MARY ANN CIRCLE	SHODEEN HOMES, LLC	SINGLE FAMILY RESIDENCE	R1	09-05-276-014								
15087		08/18/22	230		MERRY OAKS DR	JRH CONSTRUCTION CORP.	SINGLE FAMILY RESIDENCE	R1	06-20-476-001								
15252		11/29/22	1937		NATIONAL ST	FINNEY HOMES, LLC	SINGLE FAMILY RESIDENCE	R1	06-21-437-002								
14763		01/03/22	1019		POTOMAC AV	SILVERTHORNE DEVELOPMENT	SINGLE FAMILY RESIDENCE	R1	06-22-329-003								
14923		05/19/22	1380		SANDCASTLE DR	RUD CUSTOM HOMES, LLC	SINGLE FAMILY RESIDENCE	R1	06-30-251-020								
15189		10/11/22	2223		STRATFORD LN	CHAMPION BUILDERS	SINGLE FAMILY RESIDENCE	R1	06-20-278-010								
14889		04/14/22	2231		STRATFORD LN	CHAMPION BUILDERS	SINGLE FAMILY RESIDENCE	R1	06-20-278-009								
14860		03/24/22	2321		STRATFORD LN	CHAMPION BUILDERS	SINGLE FAMILY RESIDENCE	R1	06-20-276-012								
15027			1911		TRUMAN ST	SILVERTHORNE HOMES	SINGLE FAMILY RESIDENCE	R1	06-21-438-011								
15264		2/14/2022	2307		DUSTIN DR	FINNEY HOMES, LLC	SINGLE FAMILY RESIDENCE	R1	621152005								
14819		03/17/22	505		HERON CREEK DR	SONCO POOLS	SWIMMING POOL - IN GROUND	R1	06-21-453-001								
15013		06/15/22	330		VIKING DR	SONCO POOLS for ERIC SNYDER	SWIMMING POOL - IN GROUND	R1	06-20-425-015								
15097		08/03/22	2452		LUTHER LOWELL LN	WALSH, NICOLE	SWIMMING POOL - INGROUND	R1	06-21-127-011								
15096		08/03/22	2357		PIONEER WAY	MACDONALD, LINDSEY	SWIMMING POOL - INGROUND	R1	06-21-201-008								
15096		08/03/22	2357		PIONEER WAY	MACDONALD, LINDSEY	SWIMMING POOL - INGROUND	R1	06-21-201-008								
15085		07/27/22	1815		JC KELLOG ST	ARMOUR, RYAN	SWIMMING POOL- IN GROUND	R1	06-20-328-004								
15085		07/27/22	1815		JC KELLOG ST	ARMOUR, RYAN	SWIMMING POOL- IN GROUND	R1	06-20-328-004								
15285		1/18/2023	167		WENDY ST	SONCO POOLS for CHIS PUENTES	SWIMMING POOL- IN GROUND	R1	06-28-153-028								
14899		04/22/22	465		MERRY OAKS DR	OLIVE GROVE LANDSCAPING	SWIMMING POOL-IN GROUND / PATIO & FIREPIT	R1	06-20-451-003								

Street Sweeping 2022

Date	Operators	Sweeper #	Miles	Hours	Debris Collected	Fuel
3/14/2022	GO	P60	20.7	6.7	8	32
3/15/2022	GO	P60	28.4	7.6	8	20
3/16/2022	GO	P60	18	6	8	15
3/17/2022	GO	P60	32.2	7.1	10	20
3/18/2022	GO	P60	26.8	7.2	10	20
4/1/2022	GO	P60	30.2	8.4	8	30
4/4/2022	GO	P60	29.5	6.7	8	29
4/7/2022	GO	P60	26.9	6.1	8	18
4/8/2022	GO	P60	31.6	7.1	8	18
4/11/2022	GO	P60	28.6	6.6	10	21
4/13/2022	GO	P60	33.5	6.9	8	18
4/14/2022	GO	P60	29.2	6.4	8	21
4/16/2022	GO	P60	24.6	6.7	24	19
4/18/2022	GO	P60	32.2	6.9	8	20
4/19/2022	GO	P60	22.8	6.5	16	17
4/19/2022	GO	P60	24.6	6.8	8	20
5/6/2022	GO	P60	29.3	6.8	8	23
5/11/2022	TP	P61	31	7.2	6	14
5/12/2022	GO	P60	23.5	6.9	8	38
5/12/2022	TP	P61	26.2	6.9	4	31.6
5/20/2022	GO	P60	22.8	7.2	8	20
5/23/2022	TP	P61	32	6.6	5	14.1
5/27/2022	GO	P60	24	6.6	8	22
6/3/2022	GO	P60	22.3	7.1	8	20
6/10/2022	GO	P60	19	6.7	8	24
6/14/2022	MS	P60	27.8	6.2	8	20
6/14/2022	TP	P61	30.4	6.7	6	13.2
6/15/2022	MS	P60	23	4.6	6	14
6/16/2022	GO	P60	23.8	6.9	8	20
6/20/2022	TP	P61	42.7	9.1	9	18.8
6/24/2022	GO	P60	21.4	6.5	6	18
6/27/2022	GO	P60	5.1	2.6	2	5
7/1/2022	GO	P60	18.9	7.1	8	20

Date	Operators	Sweeper #	Miles	Hours	Debris Collected	Fuel
7/8/2022	GO	P60	22.3	6.9	8	19
7/15/2022	GO	P60	23.2	7.1	8	21
7/18/2022	GO	P60	39.6	9.9	12	29
7/18/2022	SG	P61	33	9	6	14
7/19/2022	GO	P60	43.3	9.8	12	27
7/19/2022	SG	P61	42	9	6	16
7/20/2022	GO	P60	45.1	9.8	12	29
7/21/2022	SG	P61	43	8	9	16
7/29/2022	GO	P60	21.6	6.6	8	19
8/1/2022	GO	P60	23.3	6.5	8	17
8/5/2022	GO	P60	24.6	6.9	8	20
8/15/2022	GO	P60	22.6	7	8	19
8/19/2022	GO	P60	11.5	4	4	10
8/26/2022	GO	P60	44.9	8	2	29
8/28/2022	SG	P61	14	3	3	0
9/1/2022	SG	P61	16	3	3	17
9/2/2022	GO	P60	21.3	6.1	4	25
9/9/2022	GO	P60	25	7	8	21
9/12/2022	SG	P61	14	3	3	0
9/13/2022	GO	P60	42	9.2	10	28
9/13/2022	SG	P61	40	9	4	23
9/14/2022	GO	P60	50.2	9.4	12	28
9/14/2022	SG	P61	42	9	9	15
9/15/2022	GO	P60	24.4	5.5	8	17
9/15/2022	SG	P61	42	9	6	15
9/30/2022	GO	P60	19	5.6	8	16
10/6/2022	GO	P60	44.2	8.4	16	23
10/7/2022	GO	P60	8.9	3.2	4	8
10/10/2022	GO	P60	35.6	6.9	12	17
10/14/2022	GO	P60	22	6.9	18	23
10/17/2022	GO	P60	19.1	6.9	10	16
10/18/2022	GO	P60	13.5	4	10	9
10/21/2022	GO	P60	9.1	3.1	6	10
10/28/2022	GO	P60	26.3	7	30	22
10/31/2022	GO	P60	41	9.8	35	29
10/31/2022	SG	P61	20	4	3	7
11/11/2022	SG	P61	15	5	15	0
11/22/2022	GO	P60	17.9	5.5	12	17
11/22/2022	TP	P61	12	4	18	0
11/23/2022	GO	P60	26	6.8	24	18
11/23/2022	SK	P61	6.7	4	9	11
12/6/2022	GO	P60	28.9	7	16	19
12/7/2022	GO	P60	28	5.6	16	15
Totals			2056.3	513.5	733	1427.7

2022 Storm Sewer Maintenance
Hours Worked

Employee	Storm Sewer Cleaning	Storm Sewer Repair	TV Storm	CB/MH Repair	CB/MH Cleaning	Storm Total	Sweeping	Ditch Maintenance	Total
Fleetwood	1.00	43.00	0.00	21.00	0.00	65.00	0.00	0.00	65.00
Garrelts	24.00	111.00	0.00	16.00	0.00	151.00	80.00	0.00	231.00
Jennings	5.00	58.00	0.00	0.00	0.00	63.00	0.00	40.00	103.00
Kurth	3.00	8.00	2.00	7.00	45.50	65.50	35.00	0.00	100.50
Miller	9.00	91.00	0.00	252.00	0.00	352.00	0.00	0.00	352.00
Ormond G	0.00	0.00	0.00	0.00	0.00	0.00	493.00	0.00	493.00
Ormond V	0.00	18.00	0.00	75.00	0.00	93.00	0.00	0.00	93.00
Owens	0.00	0.00	0.00	0.00	0.00	0.00	0.00	0.00	0.00
Pumfrey	21.00	27.00	0.00	7.00	3.00	58.00	77.00	0.00	135.00
Sanderson	16.00	141.00	0.00	60.00	0.00	217.00	0.00	32.00	249.00
Schroeder	2.00	43.00	0.00	62.00	14.00	121.00	56.00	32.00	209.00
Siebrasse	2.00	0.00	0.00	0.00	3.00	5.00	8.00	0.00	13.00
									0.00
Division Total	83.00	540.00	2.00	500.00	65.50	1,190.50	749.00	104.00	2,043.50