



Illinois Environmental Protection Agency

1021 North Grand Avenue East • P.O. Box 19276 • Springfield • Illinois • 62794-9276 • (217) 782-3397

Notice of Intent for New or Renewal of General Permit for Discharges from Small Municipal Separate Storm Sewer Systems (MS4's)

Part I. Municipal (MS4) Contact Information

- Name of Municipality: MS4 #:
Population (based on 2010 census):
- MS4 Mailing Address: City: , IL Zip:
- Primary MS4 Contact Person (Authorized Representative for MS4 Permit)
Name: Title:
Phone: Email Address:

General Information

- Latitude and Longitude at approximate geographical center of MS4 for which you are requesting authorization to discharge:
Latitude: Longitude:
Degrees Minutes Seconds Degrees Minutes Seconds
- Community Type: ☒ Other:
- Name(s) of governmental entity(ies) in which MS4 is located:

| City/Village | Township | County |
|---------------------------------------|---------------------------------------|-------------------------------------|
| <input type="text" value="Sycamore"/> | <input type="text" value="Sycamore"/> | <input type="text" value="DeKalb"/> |
| <input type="text"/> | <input type="text" value="DeKalb"/> | <input type="text"/> |
| <input type="text"/> | <input type="text" value="Cortland"/> | <input type="text"/> |
| <input type="text"/> | <input type="text" value="Mayfield"/> | <input type="text"/> |
- Area of land within your MS4 in square miles:
- Percent of MS4 served by combined sewer: Percent of MS4 served by separate sewer:

Impaired Waters

The most recent 303(d) list may be found at <https://www2.illinois.gov/epa/topics/water-quality/watershed-management/tmdls/Pages/303d-list.aspx>. Information regarding TMDLs may be found at <https://www2.illinois.gov/epa/topics/water-quality/watershed-management/tmdls/Pages/default.aspx>.

- | Name(s) of known receiving waters (in and within 3 miles of MS4 area) | Impairment listed on 303d List or TMDL? |
|---|---|
| <input type="text" value="Kishwaukee River"/> | <input checked="" type="radio"/> Yes <input type="radio"/> No |

9a. If impaired, which potential causes and source?

Causes:

Source:

9b. Are the receiving waterbodies included in an approved TMDL or alternate water quality management plan? ☐ Yes ☒ No

9c. Is the MS4 community included in the chloride variance? ☐ Yes ☒ No

Program Responsibility

10. Shared Responsibility

Is your MS4 responsible for any permit requirements of another MS4 community? ☐ Yes ☒ No

Does your MS4 Community rely on another MS4 to satisfy any of the permit requirements? ☐ Yes ☒ No

11. Co-Permittee

Is your MS4 Community a Co-Permittee with another MS4 Community? ☐ Yes ☒ No

12. Other contacts responsible for implementation or coordination of Stormwater Management Program

Name: Title:

Phone: Email:

Area of Responsibility:

Add a row

Delete last row

Part II. Best Management Practices (include shared responsibilities) which have been implemented or are proposed to be implemented in the MS4 area

A. Public Education and Outreach

Approximate date first implemented: June, 2014

Frequency of each BMP program: Annual

Qualifying Local Programs

DeKalb County Stormwater Committee and Kishwaukee Watershed Steering Committee

Measurable Goals (include shared responsibilities)

☒ A.1 Distributed Paper Material

Brief Description of BMP

SWPPP brochures and manuals are available at the Community Development Department.

Measurable Goals, including frequencies

Provide access to brochures, manuals, and the Illinois Urban Manual.

Milestones

Year 1: Continue to provide easy access to information and update as necessary.

Year 2: Continue to provide easy access to information and update as necessary.

Year 3: Continue to provide easy access to information and update as necessary.

Year 4: Continue to provide easy access to information and update as necessary.

Year 5: Continue to provide easy access to information and update as necessary.

Additional Info

BMP Number:

Add a row

Delete last row

☐ A.2 Speaking Engagement

☐ A.3 Public Service Announcement

☐ A.4 Community Event

☒ A.5 Classroom Education Material

Brief Description of BMP

Flood prevention information is available at the Sycamore Public Library and participation in CRS. CRS includes mailing

Measurable Goals, including frequencies

Provide the copies of the following documents, available at the City office:

- Above the Flood: Elevating Your Floodprone House, FEMA-347 (2000)
- Answers to Questions About the National Flood Insurance Program, F-084 (2011)
- Elevated Residential Structures, FEMA-54 (1984)
- Protecting Manufactured Homes from Floods and Other Hazards, FEMA P-85 (2009)
- Protecting Floodplain Resources, FEMA-268 (1996)

- Reducing Damage from Localized Flooding, FEMA 511 (2005)

Milestones

Year 1: Continue to provide easy access to information and update as necessary.

Year 2: Continue to provide easy access to information and update as necessary.

Year 3: Continue to provide easy access to information and update as necessary.

Year 4: Continue to provide easy access to information and update as necessary.

Year 5: Continue to provide easy access to information and update as necessary.

Additional Info

BMP Number:

Add a row

Delete last row

☒ A.6 Other Public Education

Brief Description of BMP

The City of Sycamore participates as a voting member on the DeKalb County Stormwater Committee and attends the Kishwaukee Watershed Steering Committee. Participation in Community Rating Services.

Measurable Goals, including frequencies

Attendance

Milestones

Year 1: Attend and participate in meetings,annual CRS Mailers and notification on utility bills

Year 2: Attend and participate in meetings,annual CRS Mailers and notification on utility bills

Year 3: Attend and participate in meetings,annual CRS Mailers and notification on utility bills

Year 4: Attend and participate in meetings,annual CRS Mailers and notification on utility bills

Year 5: Attend and participate in meetings,annual CRS Mailers and notification on utility bills

Additional Info

BMP Number:

Add a row

Delete last row

B. Public Participation/Involvement

Approximate date first implemented: 2017

Frequency of each BMP program: Has not met recently

Qualifying Local Programs

DeKalb Urban Area Stakeholders Group

Measurable Goals (include shared responsibilities)

- ☐ B.1 Public Panel
- ☐ B.2 Educational Volunteer
- ☒ B.3 Stakeholder Meeting

Brief Description of BMP

DeKalb Urban Area Stakeholders Group includes members from Sycamore, DeKalb, and other local areas within DeKalb County.

Measurable Goals, including frequencies

Attend meetings serving as the representative of the City of Sycamore.

Milestones

Year 1: If panel meets, attend meeting.

Year 2: If panel meets, attend meeting.

Year 3: If panel meets, attend meeting.

Year 4: If panel meets, attend meeting.

Year 5: If panel meets, attend meeting.

Additional Info

BMP Number:

Add a row

Delete last row

- ☐ B.4 Public Hearing
- ☐ B.5 Volunteer Monitoring
- ☒ B.6. Program Involvement

Brief Description of BMP

Participation in the Community Rating System (CRS)

Measurable Goals, including frequencies

The City of Sycamore participates in FEMA's Community Rating System and has completed its 4-year cycle verification for 2022 and annual renewal for 2023.

Milestones

Year 1: Retain CRS Level 7 status

Year 2: Retain CRS Level 7 status

Year 3: Retain CRS Level 7 status

Year 4: Retain CRS Level 7 status

Year 5: Retain CRS Level 7 status

Additional Info

BMP Number:

Add a row

Delete last row

☐ B.7 Other Public Involvement

C. Illicit Discharge Detection and Elimination

Approximate date first implemented: Frequency of each BMP program:

Qualifying Local Programs

Storm Sewer Atlas

Measurable Goals (include shared responsibilities)

☒ C.1 Sewer Map Preparation

Brief Description of BMP

The City has reviewed and continues to review and update its stormsewer atlas to include corrections and additions of publicly accepted stormsewers. This is managed by the Public Works Department via ArcGIS software.

Measurable Goals, including frequencies

Update maps with each new development and each discovery of inaccuracies or new information.

Milestones

Year 1:

Year 2:

Year 3:

Year 4:

Year 5:

Additional Info

BMP Number:

Add a row

Delete last row

☒ C.2 Regulatory Control Program

Brief Description of BMP

Illinois Discharge Program

Measurable Goals, including frequencies

Enforcement of City Program via the Unified Development Ordinance (UDO)

Milestones

Year 1: Continue to enforce program.

Year 2: Continue to enforce program.

Year 3: Continue to enforce program.

Year 4: Continue to enforce program.

Year 5: Continue to enforce program.

Additional Info

BMP Number:

Add a row

Delete last row

☐ C.3 Detection/Elimination Prioritization Plan

☒ C.4 Illicit Discharge Tracing Procedures

Brief Description of BMP

Illicit Discharge Tracing Procedures

Measurable Goals, including frequencies

The City traces illicit discharges as they are identified.

Milestones

Year 1: Continue tracing.

Year 2: Continue tracing.

Year 3: Continue tracing.

Year 4: Continue tracing.

Year 5: Continue tracing.

Additional Info

BMP Number:

Add a row

Delete last row

☒ C.5 Illicit Source Removal Procedures

Brief Description of BMP

The City has developed a list of emergency contacts and completed Incident Command System Training.

Measurable Goals, including frequencies

All new employees are required to complete entry level ICS training. Management staff complete additional training. Emergency contacts will continue to be updated.

Milestones

Year 1: Update contacts and continue training.

Year 2: Update contacts and continue training.

Year 3: Update contacts and continue training.

Year 4: Update contacts and continue training.

Year 5: Update contacts and continue training.

Additional Info

BMP Number:

Add a row

Delete last row

☐ C.6 Program Evaluation and Assessment

☒ C.7 Visual Dry Weather Screening

Brief Description of BMP

Monitoring and inspection of stormwater structures.

Measurable Goals, including frequencies

All outfalls are screened annually. 20% of stormsewer catch basins and inlets to be screened annually. Annual evaluation of the screening program to be done. All of this to be documented through the Public Works Department as inspections, vactoring, and cleanings occur. Inspections are evident through manhour tallies.

Milestones

Year 1: Continue to visually inspect outfalls for illicit discharges and review effectiveness of program.

Year 2: Continue to visually inspect outfalls for illicit discharges and review effectiveness of program.

Year 3: Continue to visually inspect outfalls for illicit discharges and review effectiveness of program.

Year 4: Continue to visually inspect outfalls for illicit discharges and review effectiveness of program.

Year 5: Continue to visually inspect outfalls for illicit discharges and review effectiveness of program.

Additional Info

BMP Number:

Add a row

Delete last row

☐ C.8 Pollutant Field Testing

☒ C.9 Public Notification

Brief Description of BMP

The City's website provides access to a brochure on stormwater pollution prevention.

Measurable Goals, including frequencies

Continue to publicize and update NPDES information.

Milestones

Year 1: Provide on website.

Year 2: Provide on website.

Year 3: Provide on website.

Year 4: Provide on website.

Year 5: Provide on website.

Additional Info

BMP Number:

Add a row

Delete last row

☐ C.10 Other Illicit Discharge Controls

D. Construction Site Runoff Control

Approximate date first implemented: 2014

Frequency of each BMP program: Annual

Qualifying Local Programs

The City of Sycamore has adopted a Soil Erosion Control Ordinance which follows the specifications of the IEPA. The ordinance allows the City to enforce this for all sites regardless of the size.

☒ D.1 Regulatory Control Program

Brief Description of BMP

SWPPP

Measurable Goals, including frequencies

Each applicant is responsible for the management of their project site and the City completes spot inspections to enforce the SWPPP. If necessary, the City issues ordinance violations to achieve compliance. Please see attached reports for reference.

Milestones

Year 1: Continued enforcement.

Year 2: Continued enforcement.

Year 3: Continued enforcement.

Measurable Goals (include shared responsibilities)

Year 4: Continued enforcement.

Year 5: Continued enforcement.

Additional Info

BMP Number:

Add a row

Delete last row

☐ D.2 Erosion and Sediment Control BMPs

☐ D.3 Other Waste Control Program

☒ D.4 Site Plan Review Procedures

Brief Description of BMP

Plan review for SESC & SWPPP

Measurable Goals, including frequencies

The City reviews all plans for proper SESC and SWPPP. Regardless of site properties, SWPPP is required per City Ordinance. The City will not issue a building permit until an IL 10 permit has been issued for sites greater than 1 acre.

Milestones

Year 1: Continue monitoring permit activity.

Year 2: Continue monitoring permit activity.

Year 3: Continue monitoring permit activity.

Year 4: Continue monitoring permit activity.

Year 5: Continue monitoring permit activity.

Additional Info

BMP Number:

Add a row

Delete last row

☐ D.5 Public Information Handling Procedures

☒ D.6 Site Inspection/Enforcement Procedures

Brief Description of BMP

Adoption of SESC measures in the City Ordinance which follows the regulations of the IEPA. The City enforces this at all size regardless of size.

Measurable Goals, including frequencies

The city has and will continue to complete and document inspections. Violations will be subject to fine and remediation.

Milestones

| | |
|---------|-----------------------|
| Year 1: | Continue enforcement. |
| Year 2: | Continue enforcement. |
| Year 3: | Continue enforcement. |
| Year 4: | Continue enforcement. |
| Year 5: | Continue enforcement. |

Additional Info

BMP Number:

Add a row

Delete last row

☐ D.7 Other Construction Site Runoff Controls

E. Post-Construction Runoff Control

Approximate date first implemented: 2014 Frequency of each BMP program: Annual

Qualifying Local Programs

Measurable Goals (include shared responsibilities)

☐ E.1 Community Control Strategy

☒ E.2 Regulatory Control Program

Brief Description of BMP

Enforcement of the Municipal Code.

Measurable Goals, including frequencies

The Municipal Code provides the City with the authority to monitor and require corrective action of illicit discharges.

Milestones

| | |
|---------|-----------------------|
| Year 1: | Continue enforcement. |
| Year 2: | Continue enforcement. |
| Year 3: | Continue enforcement. |
| Year 4: | Continue enforcement. |
| Year 5: | Continue enforcement. |

Additional Info

BMP Number:

Add a row

Delete last row

☐ E.3 Long Term O & M Procedures

☒ E.4 Pre-Construction Review of BMP Designs

Brief Description of BMP

Site plan review for compliance.

Measurable Goals, including frequencies

Review site plans for BMP compliance with the City Municipal Code, UDO, and IEPA regulations.

Milestones

Year 1: Continue to review all plans for BMP compliance.

Year 2: Continue to review all plans for BMP compliance.

Year 3: Continue to review all plans for BMP compliance.

Year 4: Continue to review all plans for BMP compliance.

Year 5: Continue to review all plans for BMP compliance.

Additional Info

BMP Number:

Add a row

Delete last row

☒ E.5 Site Inspections During Construction

Brief Description of BMP

Site inspections

Measurable Goals, including frequencies

The applicant is responsible for completion SWPPP strategies and the City routinely inspects the site for compliance.

Milestones

Year 1: Continue to inspect construction sites.

Year 2: Continue to inspect construction sites.

Year 3: Continue to inspect construction sites.

Year 4: Continue to inspect construction sites.

Year 5: Continue to inspect construction sites.

Additional Info

BMP Number:

Add a row

Delete last row

☒ E.6 Post-Construction Inspections

Brief Description of BMP

Inspection of completed construction sites.

Measurable Goals, including frequencies

The City completes inspections of all sites prior to the issuance of a permit of occupancy. This includes all sites regardless of size. Field occupancy permits are not issued until stabilization is 70% complete or a NOI has been issued by the IEPA.

Milestones

Year 1: Continue to enforce site final stabilization prior to final occupancy.

Year 2: Continue to enforce site final stabilization prior to final occupancy.

Year 3: Continue to enforce site final stabilization prior to final occupancy.

Year 4: Continue to enforce site final stabilization prior to final occupancy.

Year 5: Continue to enforce site final stabilization prior to final occupancy.

Additional Info

BMP Number:

Add a row

Delete last row

☐ E.7 Other Post-Construction Runoff Controls

F. Pollution Prevention/Good Housekeeping

Approximate date first implemented: Frequency of each BMP program:

Qualifying Local Programs

☒ F.1 Employee Training Program

Brief Description of BMP

The City has a training program for employees regarding stormwater pollution prevention. Employees are reminded on rain days of the City ordinance for illicit discharges. If a suspect discharge is observed the engineering department is notified. Employees often look for illegal sewer connections on dry days when catch basins are cleaned.

Measurable Goals (include shared responsibilities)

Measurable Goals, including frequencies

Identify and participate in stormwater pollution prevention training opportunities.

Milestones

Year 1: Identify and take action on storm water issues.

Year 2: Identify and take action on storm water issues.

Year 3: Identify and take action on storm water issues.

Year 4: Identify and take action on storm water issues.

Year 5: Identify and take action on storm water issues.

Additional Info

BMP Number:

Add a row

Delete last row

☒ F.2 Inspection and Maintenance Program

Brief Description of BMP

The City has a training program for employees regarding stormwater pollution prevention. Employees are reminded on rain days of the City ordinance for illicit discharges. If a suspect discharge is observed the engineering department is notified. Employees often look for illegal sewer connections on dry days when catch basins are cleaned.

Measurable Goals, including frequencies

Identify and participate in stormwater pollution prevention training opportunities.

Milestones

Year 1: Identify and take action on storm water issues.

Year 2: Identify and take action on storm water issues.

Year 3: Identify and take action on storm water issues.

Year 4: Identify and take action on storm water issues.

Year 5: Identify and take action on storm water issues.

Additional Info

BMP Number:

Add a row

Delete last row

☒ F.3 Municipal Operations Storm Water Control

Brief Description of BMP

Street Sweeping and storm sewer jetting.

Measurable Goals, including frequencies

Comply with APWA and EPA standards for street sweeping and storm sewer cleaning.

Milestones

Year 1: Continue street sweeping operations and track materials collected & disposed.

Year 2: Continue street sweeping operations and track materials collected & disposed.

Year 3: Continue street sweeping operations and track materials collected & disposed.

Year 4: Continue street sweeping operations and track materials collected & disposed.

Year 5: Continue street sweeping operations and track materials collected & disposed.

Additional Info

BMP Number:

Add a row

Delete last row

☒ F.4 Municipal Operations Waste Disposal

Brief Description of BMP

Leaf pickup program

Measurable Goals, including frequencies

Complete annual leaf and brush pickup of materials that may otherwise enter the stormsewer system.

Milestones

Year 1: Continue the annual leaf pickup program.

Year 2: Continue the annual leaf pickup program.

Year 3: Continue the annual leaf pickup program.

Year 4: Continue the annual leaf pickup program.

Year 5: Continue the annual leaf pickup program.

Additional Info

BMP Number:

Add a row

Delete last row

☐ F.5 Flood Management/Assess Guidelines

☐ F.6 Other Municipal Operations Controls

BMPs Currently Implemented and Proposed

| BMP Number | Location |
|------------|----------|
| | |

Add a row

Delete last row

Approximate Pollutant Reduction Resulting from each BMP

| BMP Number | Pollutant | Reduction |
|------------|-----------|-----------|
| | | |

Add a row

Delete last row

Instream Monitoring Program

Is there an instream monitoring program currently in place? ☒ Yes ☐ No

Is an instream monitoring program currently being proposed? ☐ Yes ☒ No

If Yes, which parameters are monitored and at what frequency?

| Parameter | Frequency |
|----------------------|------------------------------|
| Visual water quality | Monthly depending on weather |

Add a row

Delete last row

Sediment Monitoring

Is sediment monitoring currently taking place? ☐ Yes ☒ No

Sample Monitoring of Outfalls

Is sample monitoring of outfalls currently taking place? ☒ Yes ☐ No

If Yes, list locations, pollutant parameters, and frequency of sampling.

| Location | Pollutant Parameter | Frequency of Sampling |
|-------------------|--|-----------------------|
| Subdivision ponds | Visual water quality & outfall condition | As needed |

Add a row

Delete last row

Other Monitoring

Describe other types of monitoring implemented or proposed to evaluate the BMP effectiveness or water quality impact of stormwater.

Part III. Certification

I certify under penalty of law that this document and all attachments were prepared under my direction or supervision in accordance with a system designed to assure that qualified personnel properly gathered and evaluated the information submitted. Based on my inquiry of the person or persons who manage the system, or those persons directly responsible for gathering the information, the information submitted is, to the best of my knowledge and belief, true, accurate, and complete. I am aware that there are significant penalties for knowingly submitting false information, including the possibility of fines and imprisonment.

Any person who knowingly makes a false, fictitious, or fraudulent material statement, orally or in writing, to the Illinois EPA commits a Class 4 felony. A second or subsequent offense after conviction is a Class 3 felony (415 ILCS 5/44 (h)).

Mark Bushnell

Authorized Representative Name

City Engineer

Title



Authorized Representative Signature

4/9/24

Date

You may complete this form online and save a copy locally before printing and signing the form. It should then be sent to:

Illinois Environmental Protection Agency
Bureau of Water
Division of Water Pollution Control
Attn: Permit Section
P.O. Box 19276
1021 North Grand Avenue East
Springfield, IL 62794-9276

Information required by this form must be provided to comply with 415 ILCS 5/39 (2000). Failure to do so may prevent this form from being processed and could result in your application being denied.

ILLINOIS ENVIRONMENTAL PROTECTION AGENCY

1021 NORTH GRAND AVENUE EAST, P.O. BOX 19276, SPRINGFIELD, ILLINOIS 62794-9276 • (217) 782-3397

JB PRITZKER, GOVERNOR

JOHN J. KIM, DIRECTOR

Bureau of Water / Division of Water Pollution Control / Field Operations Section

Phase II Municipal Separate Storm Sewer System INSPECTION CHECKLIST

[illegible]

STORM WATER MANAGEMENT PROGRAM

PUBLIC EDUCATION AND OUTREACH ON STORM WATER IMPACTS

| | |
|-----------------------------|------------------------|
| Qualifying Programs: | Not applicable per NOI |
| | |
| | |
| | |
| | |
| | |
| | |
| | |

| | |
|--------------------------------|------|
| Responsibility Sharing: | none |
|--------------------------------|------|

| Minimum Control Measures: | Compliance: | Notes: |
|-----------------------------------|--------------------|------------------------------|
| Pollutant Discharge Minimization | yes | std operating procedure, DPW |
| Green Infrastructure Strategies | yes | encouraged by City |
| Green Strategy Costs and Benefits | yes | table meeting topic |

| Best Management Practices: | Measurable Goals: | Compliance: |
|---|---|--------------------|
| DeKalb Stormwater Management | Participation and Attendance Proposed modifications to Ordinances | |
| | https://dekalbcounty.org/government/county-boards-commissions/stormwater-management/ | |
| Participation in FEMA CRS Program | Provide guidance, information and assistance with flooding information | |
| | and opportunities for flood prevention | |
| Kishwaukee Watershed Steering Committee | Participation in meetings | |
| | https://dekalbcountywatersheds-il.org/current-planning-area | |
| City of Sycamore Website | | |
| | https://cityofsycamore.com/development/national-pollutant-discharge-elimination-system-npdes/ | |
| | | |
| | | |

STORM WATER MANAGEMENT PROGRAM

PUBLIC INVOLVEMENT AND PARTICIPATION

[illegible]

| | |
|--------------------------------|-----|
| Responsibility Sharing: | N/A |
|--------------------------------|-----|

| Minimum Control Measures: | Compliance: | Notes: |
|------------------------------------|-------------|--|
| Public Notice Compliance | yes | FEMA CRS program |
| Public Meeting (at least annually) | yes | prior to pandemic |
| Environmental Justice Areas | yes | under developemnt during inspection/evalaution |

[illegible]

STORM WATER MANAGEMENT PROGRAM

ILLICIT DISCHARGE DETECTION AND ELIMINATION

| | |
|-----------------------------|-------------------|
| Qualifying Programs: | None based on NOI |
| | |
| | |
| | |
| | |
| | |
| | |
| | |

| | |
|--------------------------------|-----|
| Responsibility Sharing: | N/A |
|--------------------------------|-----|

| Minimum Control Measures: | Compliance: | Notes: |
|--|-------------|---|
| Illicit Connection/Discharge Program | Yes | Incident Command Syst training of new employees |
| Storm Sewer System Map | yes | updated as needed via ArcGris |
| Non-Storm Water Discharge Ordinance | Yes | adopted and enforceable |
| Non-Storm Water Discharge Enforcement | yes | |
| Illegal Discharge Hazards Notification | Yes | mandatory for first responders/citizen call in |
| Significant Non-Storm Water Discharges | Yes | |
| Dry Storm Sewer Outfall Inspections | | |

| Best Management Practices: | Measurable Goals: | Compliance: |
|--|--|-------------|
| Storm sewer atlas (updated) | as needed | yes |
| Illicit dischrge ordinance | continously enforced | yes |
| illicit Discharge tracing procedures | first time employee mandatory training | yes |
| Visual dry weather screening-storm sewers | 20 % system annually | yes |
| Visual dry weather screening- select waterway monitoring | Visual Inspection completed at 3 to 4 locations periodically | yes |
| | Photos are included in the annual MS-4 reporting document. | |
| | | |
| | | |
| | | |
| | | |
| | | |

STORM WATER MANAGEMENT PROGRAM

CONSTRUCTION SITE STORM WATER RUNOFF CONTROL

[illegible]

| | |
|--------------------------------|-----|
| Responsibility Sharing: | N/a |
|--------------------------------|-----|

| Minimum Control Measures: | Compliance: | Notes: |
|--------------------------------------|-------------|---|
| Erosion/Sediment Control Ordinance | yes | IEPA like, revised 1/1/20 |
| Erosion/Sediment Control Enforcement | yes | in line with Control ordinance |
| Non-Storm Water Discharge Control | yes | ordinance required |
| SWPPP Requirement | yes | based on IEPA requirements Title 9 Chapter 7 of the Sycamore Municipal Code |
| Site Plan Review Procedures | yes | thru the city |
| Public Participation | yes | posting of permits |
| Site Inspections | yes | in house staff inspections |

[illegible][illegible]

STORM WATER MANAGEMENT PROGRAM

POST-CONSTRUCTION STORM WATER MANAGEMENT IN NEW DEVELOPMENT AND REDEVELOPMENT

[illegible]

| | |
|--------------------------------|----------------|
| Responsibility Sharing: | not applicable |
|--------------------------------|----------------|

| Minimum Control Measures: | Compliance: | Notes: |
|---------------------------------------|-------------|--|
| Load Minimization Program | yes | local ordinance requirement |
| Load Minimization Strategy Selection | yes | several options based on land occupancy |
| Long-Term O&M Plans | yes | |
| Public Surface Runoff Minimization | yes | to prevent property damage due to flooding |
| Private Runoff/Pollutant Minimization | yes | mandatory for construction permit |
| Infiltration Prevention Areas | yes | if applicable |
| New/Redevelopment Runoff Ordinance | yes | if applicable |
| Post-Construction Management Plans | yes | for local and iepa compliance |
| Long-Term BMP O&M Enforcement | yes | ordinance based |
| Flood Management Project Assessment | yes | |

[illegible]

STORM WATER MANAGEMENT PROGRAM

POLLUTION PREVENTION AND GOOD HOUSEKEEPING FOR MUNICIPAL OPERATIONS

[illegible]

| | |
|--------------------------------|-----|
| Responsibility Sharing: | n/a |
|--------------------------------|-----|

| Minimum Control Measures: | Compliance: | Notes: |
|---|-------------|--|
| Municipal O&M Program | yes | required for several departments |
| Wash Water Discharge Minimization | yes | |
| Materials/Waste Exposure Minimization | yes | ordinance enforced |
| Spill/Leak Prevention and Response | yes | reported by citizens or inter departmental |
| Inspect/Repair Storm Water BMPs | yes | |
| Deicing/Fertilizer/Pesticide Indoor Storage | yes | DPW driven std operating procedures |
| Annual Employee Training | yes | as needed of staff and mandatory for new employees |

[illegible]

MONITORING REQUIREMENTS

| | |
|--|-----|
| MS4 Population 25,000 or Greater: | No |
| Visual Inspections of Offensive Conditions: | Yes |

| | |
|-------------------------------|---|
| Monitoring Strategies: | Every two weeks the City completes an inspection of four waterway locations and takes photos for comparison. These photos are then included within our annual report. |
| | |
| | These include the (1) E Branch of the S Branch of the Kishwaukee at IL Route 64 |
| | (2) E Branch of the S Branch of the Kishwaukee at IL Route 23 (3) Martin's Ditch at Cottage Row |
| | (4) Martin's Ditch at the WWTP |

| | |
|--|-------------|
| Wet-Weather Ambient Monitoring: | yes |
| Required Sampling Parameters: | qualitative |
| Required Sampling Frequency: | see above |

RECORDKEEPING REQUIREMENTS

| Recordkeeping Item: | Retention: | Locally Available: | Website: |
|-----------------------------|-------------------|---------------------------|-----------------|
| Notice of Intent (NOI) | yes | yes | yes |
| Storm Water Management Plan | yes | yes | yes |
| Annual Reports | yes | yes | yes |
| Monitoring Data | yes | yes | |

REPORTING REQUIREMENTS

Annual Reports Submission

| | |
|---------------------------------------|-----|
| Submission to Illinois EPA by June 1: | yes |
| Website Posting by June 1: | no |
| March-March Reporting Periods: | yes |

Annual Reports Content

| | |
|---|-----|
| Assessment of BMPs and MEP Progress: | yes |
| Compliance Status Summary: | yes |
| Monitoring/Evaluation Results Summary: | yes |
| Upcoming Storm Water System Activities: | yes |
| BMP/Measurable Goal Changes: | yes |
| Responsibility Sharing Changes: | n/a |
| TMDL Requirement Changes: | n/a |
| Qualifying Program Changes: | yes |



CITY OF SYCAMORE, ILLINOIS

NPDES PERMIT FOR STORMWATER DISCHARGES
FROM MUNICIPAL SEPARATE STORMWATER SYSTEMS (MS4)

2024 ANNUAL FACILITY INSPECTION REPORT
MARCH 2023 TO FEBRUARY 2024 REPORTING PERIOD

A. Changes to Best Management Practices (BMPs)

The City of Sycamore saw no new changes to BMP commitments within the Notice of Intent (NOI) submitted from the previous reporting period.



Status of Compliance with Permit Conditions

A. Public Education and Outreach

A.1 Distribution of Paper Material – The City of Sycamore has information available in both hard copy format and in electronic versions available to the public. This information is primarily available on the Community Development Department's page on the City's website <https://www.cityofsycamore.com/197/NPDES-MS-4-Information> or in person at 541 DeKalb Avenue.

Goal: Continue to provide information to the general public, residents, and permit applicants.

Status: The following information is available in hard copy and electronic format.

The following websites have been updated to reflect our new website from January of 2023

- Soil Erosion Control Requirements
<https://www.cityofsycamore.com/DocumentCenter/View/89/Soil-Erosion-Control-Requirements-PDF?bidId=>
- Sycamore NPDES Renewal
<https://www.cityofsycamore.com/197/NPDES-MS-4-Information>
- Waste Management at your Door Collection of Hazardous Material
<https://www.cityofsycamore.com/DocumentCenter/View/175/At-Your-Door-Disposal-Service-PDF?bidId=>
- Erosion Control Ordinance
https://codelibrary.amlegal.com/codes/sycamoreil/latest/sycamore_il/0-0-0-16643
- Illinois Urban Manual
<https://illinoisurbanmanual.org/>



A.5 Classroom Educational Material

Goal: Continue to provide Educational Material utilizing the Sycamore Public Library.

Status: The following information is available in hard copy format at the Sycamore Public Library.

- Answers to Questions About the National Flood Insurance Program, F-084 (2011)
- Elevated Residential Structures, FEMA-54 (1984)
- Protecting Manufactured Homes from Floods and Other Hazards, FEMA P-85 (2009)
- Protecting Floodplain Resources, FEMA-268 (1996)
- Reducing Damage from Localized Flooding, FEMA 511 (2005)
- Above the Flood: Elevating Your Floodprone House, FEMA-347 (2000)

A.6 Other Public Education

The City of Sycamore participates as a voting member in the DeKalb County Stormwater Committee last held on **(11/16/23)** and attends the Kishwaukee Watershed Steering Committee. <https://dekalbcountywatersheds-il.org/upper-south-branch-plan>

Goal: Continue to participate in these meetings.

Status: The City Engineer serves as the City's representative at these meetings.

B. Public Participation / Involvement

B.3 Public Panel

The City of Sycamore participates in the DeKalb Urban Stakeholders Group. DeKalb Urban Area Stakeholders Group includes members of Sycamore, DeKalb and other areas within DeKalb County.

Goal: Continue to participate in these meetings.

Status: Meetings have not met recently due to lack of actionable items and Covid.

B.6 Program Involvement

The City of Sycamore participates in the Community Rating System (CRS). By doing so, the City provides mailers and flooding information to residents in hard copy format. This letter is sent to parties within and adjacent to the floodplain. In addition, each utility bill receives Notice indicating to contact the Public Works Department at 457 N Cross St.

The City's was recertified as a Level 7 Community in February of 2023.

Goal: Continue to send notices to properties.

Status: Notices have been sent.



B. Illicit Discharge Detection and Elimination

C.1 Storm Sewer Atlas

The City of Sycamore owns and maintains a GIS storm sewer atlas. All new subdivisions and developments are required to provide as-built data in electronic format so it can be added to the GIS system. Periodically these are printed in grid format. Current versions are available on the website.

<https://www.cityofsycamore.com/DocumentCenter/View/203/Guide-PDF>
<https://www.cityofsycamore.com/DocumentCenter/View/201/Pages-A-07-to-I-10-PDF>
<https://www.cityofsycamore.com/DocumentCenter/View/199/Pages-I-11-to-M-26-PDF>
<https://www.cityofsycamore.com/DocumentCenter/View/199/Pages-I-11-to-M-26-PDF>

Goal: Continue to maintain and update storm sewer atlas.

Status: Storm sewer atlas is updated and now available online.

C.2 Illicit Discharge Ordinance

The City of Sycamore has an adopted ordinance prohibiting illicit discharges. The City Code is available online. The City continues

https://codelibrary.amlegal.com/codes/sycamoreil/latest/sycamore_il/0-0-0-11510

Goal: Continue to enforce and update, as needed, the City Code prohibiting illicit discharges.

Status: The City has continued to enforce this. Copies of reports and fines can be found on the City's MS-4 webpage.

C.4 Illicit Discharge Tracing Procedures

The City traces illicit discharges when they are found by City staff or reported to Public Works, Community Development or Emergency Services. In an emergency the Fire Department will respond using the Incident Command System Procedures. For smaller events the City has put together the following checklist to make sure the proper contacts are readily available and contacted, on an as needed basis.

<https://www.cityofsycamore.com/DocumentCenter/View/210/Illicit-Discharge-Incident-PDF?bidId=>

Goal: Continue to identify, react to, document and mitigate Illicit Discharges.

Status: The City has continued to follow these procedures.

C.5 Public Notification

The City's website includes a stormwater pollution prevention brochure. This is found on the Community Development web page under Forms and Helpful information

<https://www.cityofsycamore.com/DocumentCenter/View/89/Soil-Erosion-Control-Requirements-PDF?bidId=>

In addition, all permit applicants are made aware of the City's SWPPP requirements and permits are not issued for sites larger than 1 acre unless a NOI has been issued.

Goal: Continue to provide information to the public and inform applicants of their requirements.

Status: The City has continued to follow these procedures and tracks all issued permits. On March 4th 2024 (Consideration #14A the Sycamore City Council completed and annual review and approval of the City of Sycamore Stormwater Management Plan and Program). This was at a public meeting and no comments were received.

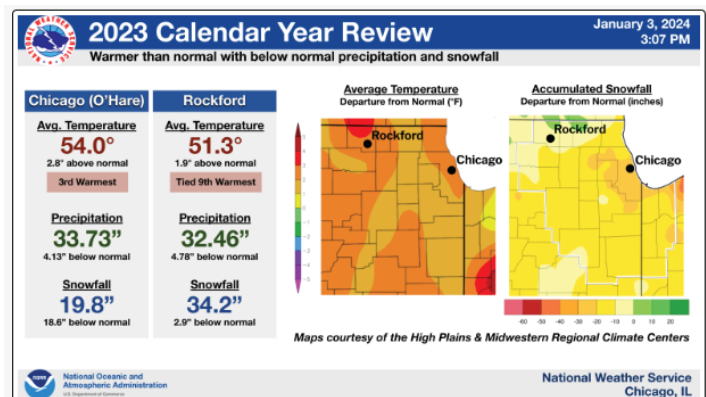
https://www.cityofsycamore.com/AgendaCenter/ViewFile/Agenda/_02062023-126

C.7 Visual Dry Weather Screening

Annual screening of 20% of storm sewer catch basins and inlets. Annual evaluation of effectiveness of screening program. This is documented through Public Works work records as they are inspected as they are vactored and storm sewers are jetted. This is in addition to the visual inspection completed during street sweeping and when resident calls are taken. Very rarely does the City receive reports of storm sewer backups or illicit discharges, therefore the frequency of the inspections is considered adequate.

The City has selected three waterway locations to complete visual inspection of water quality. These are locations along the Kishwaukee River and Martin's Ditch. These allow for a comparison of water entering City limits to an intermediate point or prior to it leaving City limits.

Goal: Continue to visually inspect outfalls for illicit discharges, review effectiveness of the program. Continue to monitor waterway locations during wet weather and dry weather events. This was less frequent in 2023 due to drier than average weather.



<https://www.weather.gov/lot/2023AnnualClimate>

Status: The City has continued to follow these procedures.



D. Construction Site Stormwater Runoff Control

D.1 Regulatory Control Program

The City of Sycamore has adopted a Soil Erosion Control Ordinance which closely mimics the rules and regulations. The ordinance allows the City to enforce this for all sites regardless of the size. Each applicant is responsible for management of their own site, but the City completes spot inspections and enforces the SWPPP.

If necessary, the City issues ordinance violations to achieve compliance.

https://codelibrary.amlegal.com/codes/sycamoreil/latest/sycamore_il/0-0-0-16643

Goal: Continue to enforce and update, as needed, the City Code.

Status: The City has continued to enforce



D.2 Erosion and Sediment Controls – Site Operators

The City of Sycamore has adopted a Soil Erosion Control Ordinance which closely mimics the rules and regulations. The ordinance allows the City to enforce this for all sites regardless of the size. Each applicant is responsible for management of their own site, but the City completes spot inspections and enforces the SWPPP. If necessary, the City issues ordinance violations to achieve compliance. Violations increase if the applicant is a repeat offender. In addition, applicant is not allowed to schedule additional inspections if there is an outstanding fine.

https://codelibrary.amlegal.com/codes/sycamoreil/latest/sycamore_il/0-0-0-16643

Goal: Continue to enforce and follow reporting guidelines.

Status: The City has continued to enforce this. Copies of reports and fines can be found within this document.

D.3 Site-Plan Reviews

The Community Development will not issue permits to sites larger than one acre unless an IEPA Permit has been issued by the IEPA. This is verified by searching on the IEPA website.

<http://dataservices.epa.illinois.gov/NoticesofIntent/ConstructQuickSearch.aspx>

As mentioned previously, the City of Sycamore has adopted a Soil Erosion Control Ordinance which closely mimics the rules and regulations. The ordinance allows the City to enforce this for all sites regardless of the size. Earthmoving activities greater than 10,000 sf require a City permit.

Goal: Continue to enforce and follow reporting guidelines.

Status: The City has continued to complete plan reviews; issue permits and enforce the City code as needed.

D.5 Site-Inspections

The Community Development completes inspections of sites during construction. For sites with their own IEPA permit, the City checks the documentation.

Goal: Continue to complete inspections.

Status: The City has continued to complete inspections. Samples can be found within the attached document.

E. Post – Construction Stormwater Management in New Development and Redevelopment

E.7 - Other Post Construction Runoff Controls

The City has adopted City Code 9-7-13 and 9-7-14 and Section 10 of the DeKalb County IL Stormwater Ordinance. In addition, the City will not issue an occupancy permit or closeout a permit until 70% stabilization has been achieved.



Goal: The City will continue to administer current ordinances related to new post-construction site runoff control.

Status: The City has continued to enforce these regulations.

F. Pollution Prevention/ Good Housekeeping for Municipal Operations

F.1 – Employee Training Program

Employee Pollution Prevention - The City of Sycamore trains its employees to identify, evaluate, correct and document the release of pollutants into the City's storm sewer system. Every City employee undergoes the first two levels of Incident Command System Training. The City has also presented the DeKalb Homebuilders association. A copy of this can be found on the City's website.

The following video was provided to Public Works Employees.

<https://www.youtube.com/watch?v=HOgtUyWUzRE>

Goal: Administration has reached out to employees to determine specific training

F.2—Inspection and Maintenance Program (Leaf Pickup, Street & Parking Lot Cleaning, and Storm Sewer Cleaning)

Goal: The City completes an annual leaf pick up program. Instructions are provided to residents to prevent leaves from being deposited into the storm sewer system or drainage ditches. <https://cityofsycamore.com/public-works/leaf-pick-program/>

The City of Sycamore owns two street sweepers which are used for routine clean up and emergency response. The City regularly conducts sweeping of streets and parking lots, and maintenance of catch basins in high traffic areas. The City completes storm sewer jetting and structure vactoring and repairs. All of these hours are tracked by employee and equipment.

Status: The City continues to complete these activities and track the hours associated with them.

G. F.6—Other Municipal Operations Controls.

Goal: The City uses interior wash bays and a triple sanitary trap to collect salt and sediment.

Status: The City continues to utilize and maintain these facilities.



B. RESULTS OF INFORMATION COLLECTED AND ANALYZED

The City found that there were no significant changes in operations or maintenance procedures and there weren't any events significant to require changes.

C. SUMMARY OF ACTIVITIES PLANNED DURING NEXT REPORTING CYCLE

A.1 Distribution of Paper Material

Measurable Goal: The City of Sycamore will update its brochure and post it to the website. **Not completed.**

B.3 Stakeholder Meeting

Measurable Goal: The City of Sycamore will discuss the MS-4 Permit and ask for public comment at a City Council meeting. – **Completed.**

B.7 Other Public Involvement

Measurable Goal: The City of Sycamore continue to update our website. – **Completed.**

C.1 Storm Sewer Atlas

Measurable Goal: The City of Sycamore continue to update our atlas and make corrections as needed. **Completed.**

C.2 Illicit Discharge Ordinance

Measurable Goal: The City has continued to enforce this ordinance. **Completed.**

C.4 Illicit Discharge Tracing Procedures

Measurable Goal: The City will continue to mandate ICS training for all new employees. **Completed.**

C.7 Visual Dry Weather Screening

Measurable Goal/Frequency: The City will continue to inspect or clean approximately 25% of the storm sewer system on an annual basis.

Measurable Goal/Frequency: The City will continue to visually inspect the four locations approximately twice per month. These inspections will include photos. **Completed, at a lesser rate due to dry weather.**



D.1 Regulatory Control Program

Measurable Goal: Continue to enforce the City Code. Community Development will continue to complete inspections and audits during construction project and levy appropriate enforcement when necessary. **Completed.**

D.3 Site Plan Reviews

Measurable Goal: Continue to enforce the City Code. Community Development will continue to complete inspections and audits during construction project and levy appropriate enforcement when necessary. **Completed.**

D.5 Site Inspections

Measurable Goal: Continue to enforce the City Code and complete SWPPP inspections or a view of documentation. **Completed.**

E.7 - Other Post Construction Runoff Controls

Measurable Goal: Continue to enforce City Code 9-7-13 and 9-7-14 and Section 10 of the DeKalb County IL Stormwater Ordinance. **Completed.**

F.1 – Employee Training Program

Measurable Goal: Continue to work with Public Work's staff to educate new staff on procedures. The City will continue to mandate ICS training for all new employees. **Completed.**

F.2—Inspection and Maintenance Program (Leaf Pickup, Street & Parking Lot Cleaning, and Storm Sewer Cleaning)

Measurable Goal: The City will continue to complete these programs and document both manhours and equipment hours during each task. **Completed.**



E. NOTICE OF RELIANCE ON ANOTHER GOVERNMENT ENTITY

The City of Sycamore Partners with Watershed Study groups but does not rely on this agency to satisfy permit requirements.

F. ACTIVE CONSTRUCTION SITES

As the City WWTP project has been completed since the last submittal there is no Current construction site in operation that is owned by the City.



Engineering Department
541 DeKalb Avenue
Sycamore, Illinois 60178
Phone: 815-895-4557

To: Michael Hall, City Manager

From: Mark Bushnell, City Engineer

Date: February 27, 2024

Re: City of Sycamore Stormwater Management Program Plan

Consideration for annual review and approval of the City of Sycamore Stormwater Management Program Plan, as prepared by the Public Works Department.

The City of Sycamore receives a permit from the Illinois Environmental Agency for the discharge of stormwater from our City-owned stormwater and storm sewer systems. This Permit is commonly referred to as a MS4 Permit (Municipal Separate Storm Sewer System). The City is required to; take both proactive steps to reduce pollutants, set targets for monitoring, and establish protocols in the event of an illicit discharge.

Public Works staff completes regularly scheduled field work including street sweeping and catch basin cleaning. Staff regularly inspects stormwater features such as outfalls, detention basins, and adjacent waterways. This information is then compiled into a report and posted on the City's website.

The Community Development performs soil and erosion control inspections on all new construction sites. Inspectors provide the necessary documentation and enforcement procedures are outlined within our municipal code.

In 2021, the City maintained IEPA compliance through the adoption of a Stormwater Management Program Plan (SMMP). This plan is then reviewed, updated, and approved on an annual basis. In 2023 there weren't any changes of comments and we haven't received any within the last calendar year.

The SMMP can be found on the City's website and at the Engineering Office. Staff has not encountered any issues with the current plan, nor have we received any public comment since its adoption.

<https://www.cityofsycamore.com/DocumentCenter/View/212/Stormwater-Management-Plan-PDF>

At this time staff recommends annual approval without modification.

Pond Inspections and Outfall Reports

Location Map:

Retention Dam at Bethany and Somoauk



























Water Quality

Visual Inspections

3/2/23

Martins Ditch



No prior rain within 48 hours. Water appears clear with no odor.

3/2/23

Route 64



Snow prior to inspection. Precip on 2/27 and 2/28. The Water appears clear with no odor.

3/2/23
Route 23



No precip prior to inspection. Water has suspended solids consistent with ag or bare earth runoff with no odor.

3/8/23

Martins Ditch



No precip prior to inspection. Water is clear with no odor.

3/8/23

Route 64 – Golf Course



No precip prior to inspection. Water is mostly clear with no odor.

3/8/23

Route 23



No precip prior to inspection. Water is mostly clear (some suspended solids from runoff) with no odor.

3/17/23

Route 64 – Golf Course



0.27" prior to inspection. Water is mostly clear (some suspended solids from runoff) with no odor.

3/17/23

Route 23



0.27" prior to inspection. Water has some suspended solids associated with runoff. No odor.

3/17/23

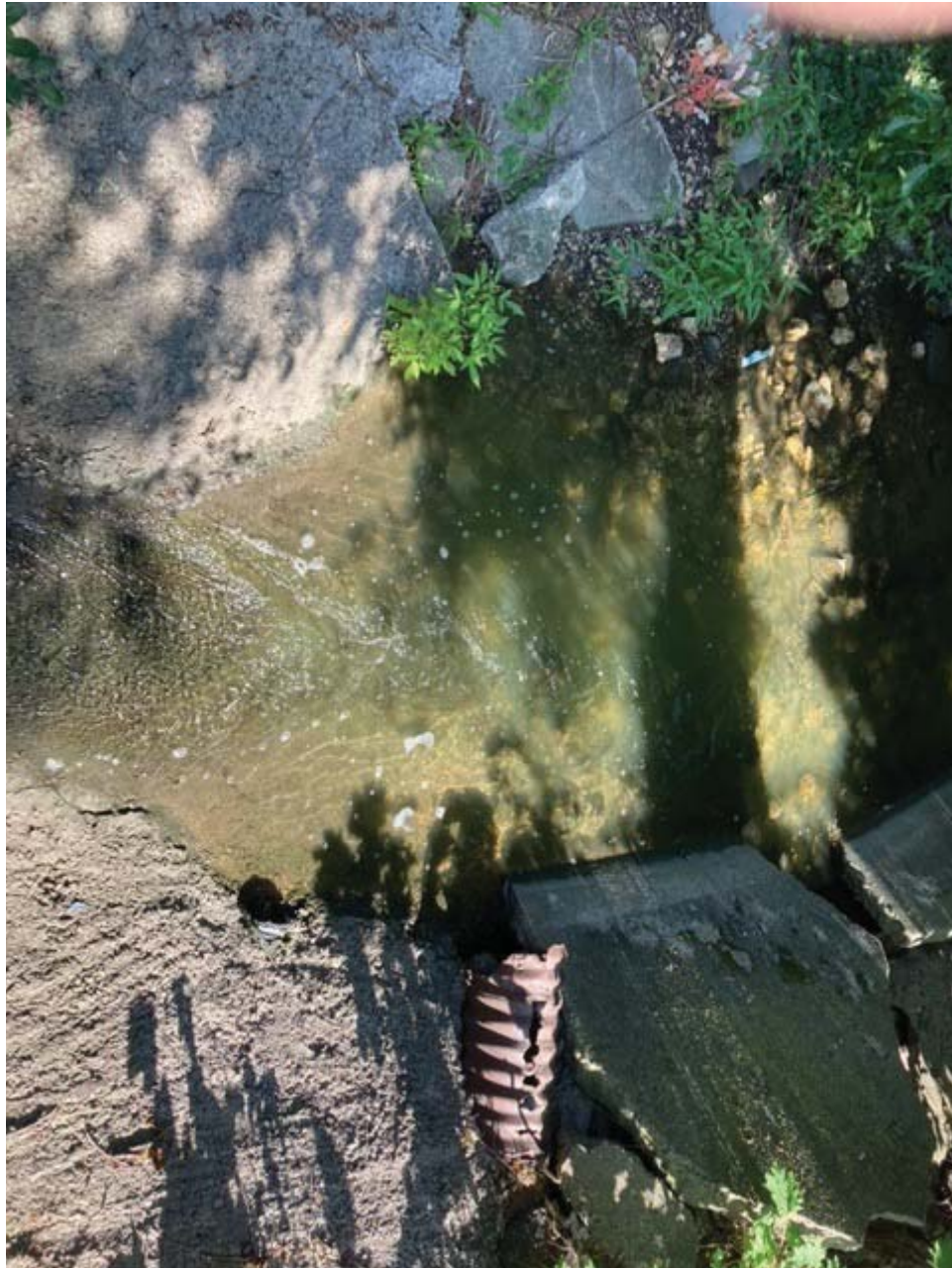
Martin's Ditch



0.27" prior to inspection. Water is clear. No odor.

7/14/23

Martin's Ditch



0.96" within 48 hours prior to inspection. Water has some suspended solids associated with runoff. No odor.

7/14/23

Route 23



0.96” within 48 hours prior to inspection. Water is cloudy with suspended solids associated with runoff. No odor.

7/14/23

Route 64



0.96” within 48 hours prior to inspection. Water is cloudy with suspended solids associated with runoff. No odor.

11/17/23

Route 64 at Golf Course



No rain. 48 hours prior to inspection. Water is cloudy with suspended solids associated with runoff and algae bloom. No odor.

1/19/24

Route 64 at Golf Course



**Trace of rain 48 hours prior to inspection. Water is mostly clear.
No odor.**

CITY OF SYCAMORE
2023 BUILDING PERMITS YTD

This only a partial year as the City switched permitted software in late 2023.

| PERMIT NO | Pt | ISSUED | ADD # | DIR | ST NAME | UNIT | SUB | NAME | IMPROVEMENT INFO | ZONE CODE | PARCEL # | SQ FT | LOT NO | EST \$ | TOTAL PERMIT FEE PAID | SF Detached (New Construction) R1 | SF Attached (2 units New Construction Duplex / Townhome) R2 | Multi-Family (New Construction - 3 units or more Condos/Rentals) R3 | SF Detached (New Construction) R4 Rural Residential | Commercial (includes additions & remodeling) C1-C4 and INST/PUB USE | Industrial (includes additions & remodeling) I1-I4 and INST/PUB | Lead Replacement Program Enacted 7/2021 |
|-----------|----|------------|-------|-----|------------------|------|-----|---|---|-----------|---------------|-------|--------|--------------|-----------------------|-----------------------------------|---|---|---|---|---|---|
| 14991 | B | 4/20/2023 | 530 | S | MAIN ST | | | JOE SWEDBERG | ALTERATION-RESIDENTIAL / STAIRS | R1 | 06-32-454-004 | | | \$ 1,500 | \$ 30 | | | | | | | |
| 15005 | | 06/13/22 | 1303 | | CAMDEN CT | | | ANDERSON, DANE | DECK | R1 | 09-06-225-005 | | | \$ 5,000 | \$ 35 | | | | | | | |
| 15157 | B | 1/3/2023 | 1705 | | MEDITERRANEAN DR | | | ICEBERG PARTNERS, LLC | ADDITIONAL FIXTURES FOR INTERIOR BUILDING / AMENDED PLANS | C3 | 09-06-398-004 | | | \$ 5,000,000 | \$ 748 | | | | | 1 | | |
| 15200 | | 2/8/2023 | 755 | | FOXPOINTE DR | | | JARED KENYON / KIMLEY-HORN | COMMERCIAL BUILDING | C3 | 09-06-201-007 | | | \$ 2,250,000 | \$ 7,586 | | | | | 1 | | |
| 15235 | | 2/6/2023 | 571 | S | PEACE RD | | | BUILTECH SERVICES, LLC / BELLE TIRES | COMMERCIAL BUILDING | C3 | 06-31-300-013 | | | \$ 3,549,444 | \$ 4,708 | | | | | 1 | | |
| 15235 | B | 2/6/2023 | 571 | S | PEACE RD | | | ALLEN INDUSTRIES for BELLE TIRE | SIGN / 4 WALL & 1 GROUND | C3 | 06-31-300-013 | | | \$ - | \$ 150 | | | | | 1 | | |
| 15256 | | 11/28/2022 | 124 | S | MAPLE ST | | | SMITH, JOSH | ELECTRICAL-ALTERATION | C2 | 06-32-260-011 | | | \$ 300 | \$ 50 | | | | | 1 | | |
| 15264 | B | 02/16/23 | 2307 | | DUSTIN DR | | | FINNEY HOMES, LLC | BASEMENT-FINISH | R1 | 06-21-152-005 | | | \$ 14,000 | \$ 195 | | | | | | | |
| 15264 | | 2/14/2022 | 2307 | | DUSTIN DR | | HC6 | FINNEY HOMES, LLC | SINGLE FAMILY RESIDENCE | R1 | 06-21-152-005 | 2,322 | 235 | \$ 340,000 | \$ 5,332 | 1 | | | | | | |
| 15274 | | 12/12/2022 | 1211 | | COOLIDGE COURT | | | STEVE PALMER - THE DECK GUYS | DECK | R1 | 09-05-276-016 | | | \$ 5,350 | \$ 35 | | | | | | | |
| 15284 | | 12/30/22 | 503 | E | STATE ST | | | CREATIVE LED SIGNS for VARIETY SMOKE & CONVENIENCE | SIGN / WALL | C2 | 06-33-302-005 | | | \$ - | \$ 30 | | | | | 1 | | |
| 15285 | | 1/18/2023 | 167 | | WENDY ST | | | SONCO POOLS for CHIS PUENTES | SWIMMING POOL- IN GROUND | R1 | 06-28-153-028 | | | \$ 50,000 | \$ 160 | | | | | | | |
| 15286 | | 1/12/2023 | 508 | W | STATE ST | | | PG DESIGN & BUILD for ILLINOIS COMMUNITY CREDIT UNION | COMMERCIAL REMODEL - LOBBY/TELLER IMPROVEMENTS | C2 | 06-32-181-040 | | | \$ 92,974 | \$ 523 | | | | | 1 | | |
| 15287 | | 1/13/2023 | 1112 | | JANET ST | | | AKINO FENCE | FENCE | R1 | 06-29-301-002 | | | \$ 4,000 | \$ 25 | | | | | | | |
| 15288 | | 1/12/2023 | 150 | | THOMAS DR | | | AMERICAN TRENCHLESS | PLUMBING ALTERATION- SANITARY SEWER REPAIR | UNIN C | 06-29-277-013 | | | \$ 5,324 | \$ 50 | | | | | 1 | | |
| 15289 | | 1/13/2023 | 2200 | | GATEWAY DR | | | SUPERIOR FIRE & SECURITY | FIRE ALARM - REPLACEMENT | C3 | 08-12-277-001 | | | \$ 8,500 | \$ 100 | | | | | 1 | | |
| 15290 | | 1/13/2023 | 1170 | | DEKALB AV | | 105 | BANNER UP SIGNS for TWIGS & TWINE | SIGN/1 WALL | C3 | 06-31-482-008 | | | \$ - | \$ 30 | | | | | 1 | | |
| 15291 | | 1/13/2023 | 660 | | SOUTH AV | | | SOTO, RAY | PLUMBING ALTERATION - SANITARY SEWER REPAIR | R2 | 09-10-201-021 | | | \$ 3,000 | \$ 50 | | | | | | | |
| 15292 | | 1/17/2023 | 1738 | | BROCK CIRCLE | | | C&H PLUMBING | PLUMBING ALTERATION - SANITARY SEWER REPAIR | R3 | 06-31-367-059 | | | \$ 4,000 | \$ 50 | | | | | | | |
| 15293 | | 1/27/2023 | 415 | S | LOCUST ST | | | INDEPENDENCE RENEWABLE ENERGY, LLC | SOLAR PV | R2 | 06-32-412-013 | | | \$ 18,150 | \$ 166 | | | | | | | |
| 15294 | | 1/18/2023 | 1967 | | DEKALB AV | | | C&H PLUMBING | PLUMBING ALTERATION - SANITARY SEWER REPAIR - ADD MANHOLE | C3 | 08-01-451-024 | | | \$ 15,000 | \$ 50 | | | | | 1 | | |
| 15295 | | 1/20/2023 | 521 | | WOODLAND ST | | | AMERICAN TRENCHLESS for RAY CARLSON | PLUMBING ALTERATION - SANITARY SEWER REPAIR | UNIN C | 06-29-204-007 | | | \$ 6,449 | \$ 50 | | | | | 1 | | |
| 15296 | | 1/20/2023 | 911 | | NICOLE PLC | | | WARBER, SUZANNE | FENCE | R1 | 09-05-203-017 | | | \$ 4,800 | \$ 25 | | | | | | | |
| 15297 | | 1/23/2023 | 1875 | | DEKALB AV | | | SULLIVAN DESIGNBUILD | ALTERATION-COMMERCIAL | C3 | 08-01-451-022 | | | \$ 600,000 | \$ 3,355 | | | | | 1 | | |
| 15297 | B | 4/13/2023 | 1875 | | DEKALB AV | | | SIGNCO, INC. | SIGN /1 WALL 1 GROUND | C3 | 08-01-451-022 | | | \$ - | \$ 110 | | | | | 1 | | |
| 15298 | | 1/31/2023 | 1870 | | PERRY CT | | | LUND, PAUL | RESIDENTIAL ALTERATION - BASEMENT BATHROOM | R1 | 09-05-380-012 | | | \$ 2,500 | \$ 110 | | | | | | | |
| 15298 | | 1/31/2023 | 1870 | | PERRY CT | | | LUND, PAUL | RESIDENTIAL ALTERATION - BASEMENT BATHROOM | R1 | 09-05-380-012 | | | \$ 2,500 | \$ 110 | | | | | | | |
| 15299 | | 1/26/2023 | 360 | | ELI BARNES CT | | | BORYLA, RON | ALTERATION-RESIDENTIAL / BATHROOM REMODEL | R1 | 06-21-377-038 | | | \$ 25,000 | \$ 205 | | | | | | | |
| 15300 | | 1/26/2023 | 2380 | | BETHANY RD | | | BANNER UP SIGNS for SIEPERT & CO., LLP | SIGN / 1 GROUND | C3 | 08-01-452-004 | | | \$ - | \$ 25 | | | | | 1 | | |
| 15301 | | 2/10/2023 | 339 | E | MAPLEWOOD DR | | | TITAN SOLAR POWER IL, INC. | SOLAR PV | R1 | 06-28-183-007 | | | \$ 28,320 | \$ 217 | | | | | | | |
| 15302 | | 1/27/2023 | 122 | E | OTTAWA ST | | | HAYNES, SHAWN | ELECTRIC SERVICE - UPGRADE | R2 | 06-32-412-006 | | | \$ 1,500 | \$ 60 | | | | | | | |
| 15303 | | 2/1/2023 | 1136 | | FREED RD | | | AMERICAN TRENCHLESS | PLUMBING ALTERATION - SANITARY SEWER REPAIR | R1 | 06-30-280-013 | | | \$ 4,240 | \$ 50 | | | | | | | |
| 15304 | | 2/1/2023 | 327 | W | STATE ST | | | J&R HERRA, INC. | AWNING | C2 | 06-32-255-051 | | | \$ - | \$ 30 | | | | | 1 | | |
| 15305 | | 2/2/2023 | 1351 | | FABIEN DR | | | MIRABELLI, JOE | FENCE | R1 | 06-30-251-024 | | | \$ 6,000 | \$ 25 | | | | | | | |
| 15306 | | 2/6/2023 | 407 | W | STATE ST | | 6 | BANNER UP SIGNS for SUZANNE KRULL PHOTO | SIGN / 1 WALL | C2 | 06-32-254-006 | | | \$ - | \$ 30 | | | | | 1 | | |

CITY OF SYCAMORE
2023 BUILDING PERMITS YTD

| PERMIT NO | Pt | ISSUED | ADD # | DIR | ST NAME | UNIT | SUB | NAME | IMPROVEMENT INFO | ZONE CODE | PARCEL # | SQ FT | LOT NO | EST \$\$ | TOTAL PERMIT FEE PAID | SF Detached (New Construction) R1 | SF Attached (2 units New Construction Duplex / Townhome) R2 | Multi-Family (New Construction - 3 units or more Condos/Rentals) R3 | SF Detached (New Construction) R4 Rural Residential | Commercial (includes additions & remodeling) C1-C4 and INST/PUB USE | Industrial (includes additions & remodeling) I1-I3 and O/C/Research Light Ind. | Lead Replacement Program Enacted 7/2021 |
|-----------|----|-----------|-------------|-----|-------------------|------|------|---|---|-----------|---------------|-------|--------|------------|-----------------------|-----------------------------------|---|---|---|---|--|---|
| 15307 | | 2/6/2023 | 331 | | STATE ST | | | BANNER UP SIGNS for EMBRACING GRACE PHOTOGRAPHY | SIGN / 1 WALL | C2 | 06-32-255-051 | | | \$ - | \$ 30 | | | | | 1 | | |
| 15308 | | 2/8/2023 | 1710 | | AFTON RD | | | SIMTECH | SIGN / 1 GROUND | M2 | 09-06-427-006 | | | \$ - | \$ 30 | | | | | | 1 | |
| 15309 | | 2/10/2023 | 1028 | | LONDON CT | | | LUKE BUTLER IMPROVEMENTS | BASEMENT EGRESS WINDOW | R1 | 09-06-224-012 | | | \$ 4,500 | \$ 30 | | | | | | | |
| 15310 | | 2/9/2023 | 2340 | | DEAN ST | | | RJ ELECTRIC SERVICE CO. | ELECTRICAL-ALTERATION / EV CHARGER | R1 | 06-21-152-001 | | | \$ 1,400 | \$ 50 | | | | | | | |
| 15311 | | 2/15/2023 | 356 | | ELI G JEWELL CT | | | SALSBERY, JENNIFER | FENCE | R1 | 06-21-377-015 | | | \$ 8,900 | \$ 25 | | | | | | | |
| 15312 | | 2/22/2023 | 1643 | | LUTHER LOWELL LN | | | SUNPOWER CORPORATION SYSTEMS | SOLAR PV | R1 | 06-21-452-001 | | | \$ 24,740 | \$ 204 | | | | | | | |
| 15314 | | 2/27/2023 | 605 | | CLAYTON CIRCLE | | | FLOOR TO CEILING | RESIDENTIAL-ALTERATION / RESTORATION AFTER FLOOD DAMAGE | R3 | 06-20-326-090 | | | \$ 75,000 | \$ 255 | | | | | | | |
| 15315 | | 2/21/2023 | 1815 | | MEDITERRANEAN DR. | | | BANNER UP SIGNS for BRADEN COUNSELING | SIGN / 2 GROUND | C3 | 09-06-398-006 | | | \$ - | \$ 60 | | | | | 1 | | |
| 15316 | | 2/21/2023 | 355 | W | STATE ST | | | BANNER UP SIGNS for M.C. BEAUTY | SIGN / 1 WALL & 8 WINDOW | C2 | 06-32-255-048 | | | \$ - | \$ 270 | | | | | 1 | | |
| 15317 | | 2/21/2023 | 326 | W | STATE ST | | | BANNER UP SIGNS for THE STUDIO BY M.C. BEAUTY | SIGN / 1 WALL | C2 | 06-32-258-012 | | | \$ - | \$ 30 | | | | | 1 | | |
| 15318 | | 2/22/2023 | 907 | | MEADOW LN | | | AKINO FENCE for MEGHAN PINTER | FENCE | R1 | 09-06-228-005 | | | \$ 4,400 | \$ 25 | | | | | | | |
| 15319 | | 02/22/23 | 1300 | | DEKALB AV | | | ST. MARY SCHOOL | TEMPORARY SIGN | C3 | 09-06-201-043 | | | \$ - | \$ - | | | | | 1 | | |
| 15320 | | 2/24/2023 | 2239 | | GATEWAY DR | | | AMERICAN TOWER | ANTENNA ALTERATION | C3 | 08-12-276-011 | | | \$ 15,000 | \$ 100 | | | | | 1 | | |
| 15321 | | 2/24/2023 | 2321 | | STRATFORD LN | | | POLICHNOWSKI, GINA AND JASON | FENCE | R1 | 06-20-276-012 | | | \$ 8,000 | \$ 25 | | | | | | | |
| 15322 | | 2/24/2023 | 2, 4, 6 & 8 | | BRIDEN LN | | OMP1 | SOLID CONSTRUCTION SERVICES, INC. | 4-UNIT CONDOMINIUM | R3 | 06-29-477-020 | 7,260 | 10 | \$ 800,000 | \$ 20,842 | | | 1 | | | | |
| 15324 | | 3/1/2023 | 1934 | | TRUMAN ST | | | PENNYLANE DECKS | DECK | R1 | 06-22-328-005 | | | \$ 11,000 | \$ 35 | | | | | | | |
| 15325 | | 2/27/2023 | 1618 | | PINE TRAIL | | | 1ST RESPONSE PLUMBING & DRAIN | PLUMBING ALTERATION - SANITARY SEWER REPAIR IN STREET | UNINC | 06-29-201-006 | | | \$ 4,900 | \$ 50 | | | | | | | |
| 15326 | | 2/28/2023 | 483 | | STATE ST | | | EHORN, MATTHEW | ELECTRIC SERVICE UPGRADE | R1 | 06-33-301-008 | | | \$ 3,500 | \$ 60 | | | | | | | |
| 15327 | | 3/1/2023 | 930 | | BAILEY RD | | | VARGA, JAMES & DANA | FENCE | R1 | 09-05-228-018 | | | \$ 6,870 | \$ 25 | | | | | | | |
| 15328 | | 03/09/23 | 1015 | W | BETHANY RD | | | RUSS SMITH CONSTRUCTION, LLC | COMMERCIAL BUILD OUT | M2 | 09-06-426-038 | | | \$ 425,000 | \$ 2,559 | | | | | | 1 | |
| 15329 | | 3/7/2023 | 2218 | | SURREY ST | | | JENNIFER MCLEAN | FENCE | R1 | 06-21-252-014 | | | \$ 3,700 | \$ 25 | | | | | | | |
| 15330 | | 3/6/2023 | 1551 | | PRAIRIE DR | | | ALARM DETECTION SYSTEMS | FIRE ALARM - ALTERATION (AES RADIO) | M1 | 09-06-426-015 | | | \$ 600 | \$ 100 | | | | | | 1 | |
| 15331 | | 03/13/23 | 304 | | FAIR ST | | | EVAN & MELISSA WILLIAMS | FENCE | R1 | 06-32-306-001 | | | \$ 3,837 | \$ 25 | | | | | | | |
| 15332 | | 3/7/2023 | 622 | S | CROSS ST | | | AKINO FENCE | FENCE | R1 | 06-32-310-004 | | | \$ 3,837 | \$ 25 | | | | | | | |
| 15333 | | 03/08/23 | 230 | | HOME ST | | | BRIAN EGERMAN | ELECTRICAL SERVICE UPGRADE | R1 | 06-32-478-018 | | | \$ 2,000 | \$ 60 | | | | | | | |
| 15334 | | 3/9/2023 | 858 | | MEADOW LN | | | DIANE DOMBEK | FENCE | R1 | 09-06-227-005 | | | \$ 1,500 | \$ 25 | | | | | | | |
| 15335 | | 3/9/2023 | 1508 | | LARSON ST | | | NICK JOURDAIN for LAURIE HOECHERL | DECK | R1 | 06-29-104-019 | | | \$ 10,000 | \$ 35 | | | | | | | |
| 15336 | | 03/15/23 | 616 | | BRIGHTON WAY | | | JOEL DAVIDSON SERVICES FOR BRIAN SWANSON | RESIDENTIAL-ADDITION | R1 | 06-21-203-003 | | | \$ 35,000 | \$ 225 | | | | | | | |
| 15337 | | 3/10/2023 | 341 | W | STATE ST | | | RUSTIC ROOTS / LACEY | ELECTRICAL REVISION | C2 | 06-32-255-015 | | | \$ 4,200 | \$ 50 | | | | | 1 | | |
| 15338 | | 3/10/2023 | 429 | | FAIR ST | | | REGAN PETERSON | FENCE | R1 | 06-32-304-002 | | | \$ 2,382 | \$ 25 | | | | | | | |
| 15339 | | 3/10/2023 | 1770 | W | STATE ST | | | BANNER UP SIGNS for BOOP THE SNOOT | SIGNS / 2 WALL | UNINC | 05-25-400-017 | | | \$ - | \$ 60 | | | | | 1 | | |
| 15340 | | 3/13/2023 | 713 | | BUCKBOARD LN | | | FRANK BABICH | ELECTRICAL-ALTERATION | R3 | 06-21-426-029 | | | \$ 3,500 | \$ 50 | | | | | | | |
| 15341 | | 03/15/23 | 1120 | | OXFORD CIR | | | LUIGI & GINA RANIERI | FENCE | R1 | 06-28-329-014 | | | \$ 6,000 | \$ 25 | | | | | | | |
| 15342 | | 03/17/23 | 235 | E | TURNER PLC | | RP3 | SHODEEN HOMES, LLC | SINGLE FAMILY RESIDENCE | R1 | 09-05-226-019 | 1866 | 369 | \$ 260,000 | \$ 5,253 | 1 | | | | | | |
| 15343 | | 03/16/23 | 243 | E | TURNER PLC | | RP3 | SHODEEN HOMES, LLC | SINGLE FAMILY RESIDENCE | R1 | 09-05-226-018 | 1786 | 368 | \$ 223,975 | \$ 5,301 | 1 | | | | | | |
| 15344 | | 03/21/23 | 317 | E | CLOVERLANE DR | | RP3 | SHODEEN HOMES, LLC | SINGLE FAMILY RESIDENCE | R1 | 09-05-226-017 | 1974 | 367 | \$ 240,000 | \$ 5,334 | 1 | | | | | | |
| 15345 | | 03/21/23 | 909 | | BAILEY RD | | RP3 | SHODEEN HOMES, LLC | SINGLE FAMILY RESIDENCE | R1 | 09-05-227-001 | 1866 | 370 | \$ 260,000 | \$ 5,253 | 1 | | | | | | |
| 15346 | | 03/15/23 | 915 | | MEADOW LN | | | SARAH CANTRELL | BASEMENT-FINISH | R1 | 09-06-228-026 | | | \$ 5,000 | \$ 105 | | | | | | | |
| 15347 | | 3/14/2023 | 1448 | | JANET ST | | | JON KERWIN | FENCE | R1 | 06-29-152-024 | | | \$ 10,000 | \$ 25 | | | | | | | |
| 15348 | | 3/15/2023 | 1300 | | DEKALB AV | | | SYCAMORE CHAMBER OF COMMERCE | TEMPORARY SIGN | C3 | 09-06-201-043 | | | \$ - | \$ - | | | | | 1 | | |

CITY OF SYCAMORE
2023 BUILDING PERMITS YTD

| PERMIT NO | Pt | ISSUED | ADD # | DIR | ST NAME | UNIT | SUB | NAME | IMPROVEMENT INFO | ZONE CODE | PARCEL # | SQ FT | LOT NO | EST \$\$ | TOTAL PERMIT FEE PAID | SF Detached (New Construction) R1 | SF Attached (2 units New Construction Duplex / Townhome) R2 | Multi-Family (New Construction - 3 units or more Condos/Rentals) R3 | SF Detached (New Construction) R4 Rural Residential | Commercial (includes additions & remodeling) C1-C4 and INST/PUB USE | Industrial (includes additions & remodeling) I1-I3 and Light Ind. O/C/Research | Lead Replacement Program Enacted 7/2021 |
|-----------|----|-----------|-------|-----|----------------------|------|-------|---|---|-----------|---------------|-------|--------|------------|-----------------------|-----------------------------------|---|---|---|---|--|---|
| 15349 | | 03/16/23 | 320 | | GEORJEAN CT | | | ADONIS BROCHES | FENCE | R1 | 09-05-331-002 | | | \$ 4,600 | \$ 25 | | | | | | | |
| 15350 | | 03/27/23 | 325 | E | CLOVERLANE DR | | RP3 | SHODEEN HOMES, LLC | SINGLE FAMILY RESIDENCE | R1 | 09-05-226-016 | 2260 | 366 | \$ 302,600 | \$ 5,372 | 1 | | | | | | |
| 15351 | | 03/17/23 | 230 | | HOME ST | | | NICK ROWLAND | FENCE | R1 | 06-32-478-018 | | | \$ 2,000 | \$ 25 | | | | | | | |
| 15352 | | 03/23/23 | 940 | E | STATE ST | | | SYCAMORE PARK DISTRICT BY J&W ROOFING CO. | KITCHEN REMODEL | PARK | 06-33-376-002 | | | \$ 29,500 | \$ - | | | | | 1 | | |
| 15353 | | 03/23/23 | 940 | E | STATE ST | | | SYCAMORE PARK DISTRICT BY J&W ROOFING CO. | BATHROOM REMODEL | PARK | 06-33-376-002 | | | \$ 11,500 | \$ - | | | | | 1 | | |
| 15354 | | 03/20/23 | 541 | | DEKALB AV | | | CITY OF SYCAMORE - COMMUNITY DEVELOPMENT DEPT | COMMERCIAL-ALTERATION | PUB | 06-32-326-011 | | | \$ 15,000 | \$ - | | | | | 1 | | |
| 15355 | | 07/20/21 | 450 | | JOHN MARSHALL LN | | | DEBRA ROBAR | FENCE | R1 | 06-21-377-048 | | | \$ 9,400 | \$ 25 | | | | | | | |
| 15356 | | 03/20/23 | 1603 | | JOHN ST | | | JOEL DAVIDSON for SARAH KIMBALL | DECK | R1 | 06-29-103-010 | | | \$ 20,000 | \$ 35 | | | | | | | |
| 15357 | | 4/20/2023 | 1347 | | WILD ST | | | SUNRUN INSTALLATION SERVICES | SOLAR PV | R1 | 09-05-400-014 | | | \$ 26,600 | \$ 208 | | | | | | | |
| 15358 | | 03/21/23 | 2345 | | MEADOW CREEK DR | | | PAUL VALENTI | FENCE | R3 | 08-01-415-019 | | | \$ 5,000 | \$ 25 | | | | | | | |
| 15359 | | 3/21/2023 | 1140 | | PARK AVE | | | APEX COMPANIES | COMMERCIAL-ALTERATION | M1 | 09-05-178-002 | | | \$ 73,683 | \$ 460 | | | | | | | |
| 15360 | | 3/22/23 | 2425 | | BETHANY RD | B | | DEKALB SIGN SHOP for APEX RESTORATION | SIGN / 1 WALL | C2 | 08-01-451-019 | | | \$ - | \$ 30 | | | | | | | |
| 15361 | | 03/21/23 | 705 | | SANDBERG DR | | | J&J CONSTRUCTION FENCE for ROB PEPPERMAN | FENCE | R1 | 09-04-301-004 | | | \$ 6,282 | \$ 25 | | | | | | | |
| 15362 | | 03/21/22 | 2311 | | BOYNTON ST | | | NAN & TOM PHILLIPS | FENCE | R1 | 06-21-128-011 | | | \$ 9,640 | \$ 25 | | | | | | | |
| 15363 | | 03/23/23 | 1033 | | WILD ST | | | SUBURBAN SEWER & SEPTIC | PLUMBING ALTERATION- SANITARY SEWER REPAIR | R1 | 09-05-205-017 | | | \$ 7,200 | \$ 50 | | | | | | | |
| 15364 | | 03/23/23 | 441 | W | HIGH ST | | | JAMES D. AHERN SIGN CO for LAXIMI OIL | SIGNS / 2 POLE & 3 CANOPY | C2 | 06-32-327-011 | | | \$ - | \$ 150 | | | | | 1 | | |
| 15365 | | 03/23/23 | 2690 | | DEKALB AV | | | JOHN PAPPAS | ELECTRICAL SERVICE - UPGRADE | C3 | 08-12-277-037 | | | \$ 10,000 | \$ 60 | | | | | 1 | | |
| 15366 | | 3/23/2023 | 1214 | | COMMERCIAL ST | | | AMERICAN TRENCHLESS | PLUMBING ALTERATION - SANITARY SEWER REPAIR/LINING | R2 | 09-05-258-010 | | | \$ 15,673 | \$ 50 | | | | | | | |
| 15367 | | 03/27/23 | 829 | | ALDEN DR | | | NATIONAL SOLAR SERVICE, LLC | SOLAR PV | R1 | 06-21-278-004 | | | \$ 31,287 | \$ 232 | | | | | | | |
| 15368 | | 4/10/2023 | 1125 | | HERON CREEK DR | | SC1U2 | JRH CONSTRUCTION CORP. | SINGLE FAMILY RESIDENCE | R1 | 06-22-333-008 | 2,280 | 291 | \$ 475,000 | \$ 2,280 | 1 | | | | | | |
| 15369 | | 03/27/23 | 525 | | CENTER CROSS ST | | | JAY STALEY | RESIDENTIAL-ALTERATION / REPLACE CONCRETE SLAB IN GARAGE | R1 | 06-32-306-049 | | | \$ 3,500 | \$ 30 | | | | | | | |
| 15370 | | 3/27/2023 | 1060 | S | DEVONSHIRE DR | | | ANDE PYNNENBERG | FENCE | R1 | 09-06-275-004 | | | \$ 7,600 | \$ 25 | | | | | | | |
| 15371 | | 4/18/2023 | 669 | | EMMERT DR | | | LAURA PAETZOLD | FENCE | R1 | 09-05-101-009 | | | \$ 7,356 | \$ 25 | | | | | | | |
| 15372 | | 4/5/2023 | 309 | | DAVIS DR | | | JRH CONSTRUCTION CORP. | RESIDENTIAL-ALTERATION / MASTER BATHROOM REMODEL | R1 | 06-21-127-001 | | | \$ 25,000 | \$ 255 | | | | | | | |
| 15373 | | 03/28/23 | 54 | | BRIDEN LN | | | SOLID CONSTRUCTION SERVICES, INC. | ALTERATION-RESIDENTIAL / OFFICE IN GARAGE | R3 | 06-29-477-044 | | | \$ 5,000 | \$ 105 | | | | | | | |
| 15374 | | 03/28/23 | 424 | | WYMAN ST | | | JEFF PATTON | STAIRWAY | M2 | 09-05-104-006 | | | \$ 5,000 | \$ 35 | | | | | | 1 | |
| 15375 | | 4/4/2023 | 2229 | | OVERLAND RD | | | BRADLEY ROWLAND | GAZEBO | R1 | 06-21-253-005 | | | \$ 12,500 | \$ 85 | | | | | | | |
| 15376 | | 3/28/2023 | 1526 | | PEBBLEWOOD DR | | | PLEASANT HILL CONSTRUCTION | FIRE RESTORATION | R2 | 09-06-180-019 | | | \$ 150,000 | \$ 225 | | | | | | | |
| 15377 | | 03/28/23 | 1842 | | PRESIDENTIAL PARKWAY | | SC1U1 | TIM GRUDECKI | SINGLE FAMILY RESIDENCE | R1 | 06-22-333-001 | 2548 | 296 | \$ 320,000 | \$ 5,469 | 1 | | | | | | |
| 15378 | | 03/31/23 | 1440 | | JANET ST | | | PAUL BIERDEMAN | FENCE | R1 | 06-29-152-025 | | | \$ 1,700 | \$ 25 | | | | | | | |
| 15378 | | 3/31/2023 | 1440 | | JANET ST | | | PAUL BIERDEMAN | FENCE | R1 | 06-29-152-025 | | | \$ 1,700 | \$ 25 | | | | | | | |
| 15379 | | 3/31/2023 | 455 | | JOHN MARSHALL LN | | | TIM & MARY BANASIAK | FENCE | R1 | 06-21-452-006 | | | \$ 8,080 | \$ 25 | | | | | | | |
| 15380 | | 4/5/2023 | 1550 | | PEBBLEWOOD DR | | | GFELLERS CONSTRUCTION | RESIDENTIAL-ALTERATION - ADD LAUNDRY ROOM | R2 | 09-06-180-022 | | | \$ 19,000 | \$ 200 | | | | | | | |
| 15381 | | 4/4/2023 | 1339 | | FABIEN DR | | | DEBRA MELDIS | FENCE | R1 | 06-30-279-019 | | | \$ 13,200 | \$ 25 | | | | | | | |
| 15382 | | 4/4/2023 | 1540 | | LARSON ST | | | DANIEL KRAMER | FENCE | R1 | 06-29-104-015 | | | \$ 5,000 | \$ 25 | | | | | | | |
| 15383 | | 4/5/2023 | 445 | | JOHN MARSHALL LN | | | RICHARD BATES | FENCE | R1 | 06-21-452-007 | | | \$ 10,000 | \$ 25 | | | | | | | |
| 15384 | | 4/6/2023 | 1019 | | POTOMAC AV | | | ANDY SARROS | PAVILION | R1 | 06-22-329-003 | | | \$ 3,000 | \$ 85 | | | | | | | |
| 15385 | | 4/10/2023 | 1108 | | TOWNSEND ST | | | AMERICAN TRENCHLESS for MIKE & BARBARA COON | PLUMBING ALTERATION - SANITARY SEWER REPAIR / LINING & ADD SUMP PIT | R1 | 09-05-252-002 | | | \$ 18,125 | \$ 80 | | | | | | | |
| 15386 | | 4/18/2023 | 265 | W | PEACE RD | | 107 | JONI PETERSON | COMMERCIAL BUILD-OUT | C3 | 06-20-400-031 | | | \$ 10,000 | \$ 160 | | | | | 1 | | |

CITY OF SYCAMORE
2023 BUILDING PERMITS YTD

| PERMIT NO | Pt | ISSUED | ADD # | DIR | ST NAME | UNIT | SUB | NAME | IMPROVEMENT INFO | ZONE CODE | PARCEL # | SQ FT | LOT NO | EST \$\$ | TOTAL PERMIT FEE PAID | SF Detached (New Construction) R1 | SF Attached (2 units New Construction Duplex / Townhome) R2 | Multi-Family (New Construction - 3 units or more Condos/Rentals) R3 | SF Detached (New Construction) R4 Rural Residential | Commercial (includes additions & remodeling) C1-C4 and INST/PUB USE | Industrial (includes additions & remodeling) I1-I4 and Research Light Ind. | Lead Replacement Program Enacted 7/2021 |
|-----------|----|------------|-------|-----|-----------------|------|------|--|---|-----------|---------------|-------|--------|------------|-----------------------|-----------------------------------|---|---|---|---|--|---|
| 15387 | | 4/11/2023 | 1001 | E | BRISTOL DR | | | PATRICK HOGAN | FENCE | R1 | 09-06-224-017 | | | \$ 4,706 | \$ 25 | | | | | | | |
| 15388 | | 4/13/2023 | 357 | N | CALIFORNIA ST | | | WEAVER CONSTRUCTION INC. | COMMERCIAL ALTERATION - BREAKROOM | M1 | 06-32-204-019 | | | \$ 26,140 | \$ - | | | | | | | |
| 15389 | | 4/11/2023 | 1300 | | DEKALB AV | | | CHILDREN'S COMMUNITY THEATRE for CCT DESCENDANTS | TEMPORARY SIGN | C3 | 09-06-201-043 | | | \$ - | \$ - | | | | | 1 | | |
| 15389 | | 4/11/2023 | 1300 | | DEKALB AV | | | CHILDREN'S COMMUNITY THEATRE for CCT DESCENDANTS | TEMPORARY SIGN | C3 | 09-06-201-043 | | | \$ - | \$ - | | | | | 1 | | |
| 15390 | | 4/12/2023 | 1381 | | FLORENCE DR | | | ALL CLEAR PLUMBING WORKS | PLUMBING ALTERATION - SANITARY SEWER REPAIR | UNIN C | 06-29-276-012 | | | \$ 8,000 | \$ 50 | | | | | 1 | | |
| 15391 | | 4/12/2023 | 938 | | SCOTT DR | | | AIMIE KRUSE | FENCE | R2 | 09-05-105-033 | | | \$ 6,140 | \$ 25 | | | | | | | |
| 15392 | | 4/12/2023 | 1819 | | BROWER PL | | | SEAN HERBERT | FENCE | R1 | 06-05-452-022 | | | \$ 5,200 | \$ 25 | | | | | | | |
| 15393 | | 4/12/2023 | 129 | | BRIAN ST | | | ANDREW STACY | SHED | R1 | 06-28-153-013 | | | \$ 4,600 | \$ 25 | | | | | | | |
| 15394 | | 4/19/2023 | 430 | | MARY ANN CIRCLE | | RP3 | SHODEEN HOMES, LLC | SINGLE FAMILY RESIDENCE | R1 | 09-05-276-012 | 2,683 | 223 | \$ 406,000 | \$ 5,387 | 1 | | | | | | |
| 15395 | | 4/17/2023 | 1300 | | DEKALB AV | | | SYCAMORE MUSIC BOOSTERS | TEMPORARY SIGN / MATTRESS FUNDRAISER | C3 | 09-06-201-043 | | | | | | | | | 1 | | |
| 15396 | | 4/17/2023 | 1625 | | DEKALB AV | | | SHRINERS | TEMPORARY SIGN / VIDALIA ONIONS | C3 | 08-01-229-012 | | | \$ - | \$ - | | | | | 1 | | |
| 15397 | | 4/17/2023 | 1300 | | DEKALB AV | | | SYCAMORE SPORTS BOOSTERS | TEMPORARY SIGN | C3 | 09-06-201-043 | | | \$ - | \$ - | | | | | 1 | | |
| 15398 | | 4/18/2023 | 1047 | | BAILEY RD | | | WILLIAM VERSLUYS | BASEMENT-FINISH | R1 | 09-05-207-015 | | | \$ 86,500 | \$ 255 | | | | | | | |
| 15399 | | 4/20/2023 | 1469 | | STARFISH LN | | | TITAN SOLAR POWER IL, INC. | SOLAR PV | R1 | 06-30-257-036 | | | \$ 42,960 | \$ 225 | | | | | | | |
| 15400 | | 4/18/2023 | 1300 | | DEKALB AV | | | CASA DEKALB COUNTY, INC. | TEMPORARY SIGN / CASA COLOR RUN 5K | C3 | 09-06-201-043 | | | \$ - | \$ - | | | | | 1 | | |
| 15401 | | 4/18/2023 | 1300 | | DEKALB AV | | | CASA DEKALB COUNTY, INC. | TEMPORARY SIGN / 50 MEN WHO COOK | C3 | 09-06-201-043 | | | \$ - | \$ - | | | | | 1 | | |
| 15402 | | 4/18/2023 | 1831 | | FORD ST | | | ALBERT AQUINO | FENCE | R1 | 06-22-333-010 | | | \$ 6,970 | \$ 25 | | | | | | | |
| 15403 | | 4/20/2023 | 2670 | | DEKALB AV | | | BANNER UP SIGNS / ROCHELLE COM HOSP / XCEL ORTHOPEDICS | SIGN / 2 WALL & 1 POLE | C3 | 08-12-277-036 | | | \$ - | \$ 90 | | | | | 1 | | |
| 15404 | | 4/20/2023 | 1515 | | AIRPORT RD | | | SYCAMORE PARK DISTRICT / SOCCER COMPLEX | SIGN / 1 GROUND | PARK S | 09-04-400-009 | | | \$ - | \$ - | | | | | 1 | | |
| 15405 | | 04/15/23 | 475 | | DEKALB AV | | | DEKALB COUNTY COMMUNITY FOUNDATION | TEMPORARY SIGN - GIVE DEKALB | C2 | 06-32-183-011 | | | \$ - | \$ - | | | | | 1 | | |
| 15406 | | 4/21/2023 | 43 | | STATE ST | | 104D | BANNER UP SIGNS / NUVO AESTHETICS | SIGN / 1 WALL | C2 | 06-32-178-004 | | | \$ - | \$ 30 | | | | | 1 | | |
| 15407 | | 4/21/2023 | 1028 | | BAILEY RD | | | IVAN GARCIA | FENCE | R1 | 09-05-228-011 | | | \$ 4,920 | \$ 25 | | | | | | | |
| 15408 | | 4/25/2023 | 1300 | | DEKALB AV | | | KISHWAUKEE VALLEY ART LEAGUE | TEMPORARY SIGN | C3 | 09-06-201-043 | | | \$ - | \$ - | | | | | 1 | | |
| 15410 | | 06/21/23 | 501 | | CHARLES ST | | | SUNRUN INSTALLATION SERVICES, INC. | SOLAR PV | R2 | 06-32-378-019 | | | \$ 43,040 | \$ 225 | | | | | | | |
| 15411 | | 07/07/23 | 1710 | | DEKALB AV | | | MAJESKI MOTORS | ALTERATION - COMMERCIAL | C3 | 08-01-281-031 | | | \$ 600,000 | \$ 4,151 | | | | | 1 | | |
| 15412 | | 4/25/2023 | 520 | | CLOVERLANE DR | | | WESLEY BESCHORNER | BASEMENT-FINISH | R1 | 09-04-104-010 | | | \$ 25,000 | \$ 240 | | | | | | | |
| 15412 | | 4/25/2023 | 520 | | CLOVERLANE DR | | | WESLEY BESCHORNER | BASEMENT-FINISH | R1 | 09-04-104-010 | | | \$ 25,000 | \$ 240 | | | | | | | |
| 15413 | | 5/2/2023 | 640 | | EMMERT DR | | | KEN SPEARS CONSTRUCTION | ADD BATHROOM | R1 | 09-05-103-005 | | | \$ 20,000 | \$ 205 | | | | | | | |
| 15414 | | 4/26/2023 | 407 | | HADLEY CT | | | ALLAN HOLDER | DECK-RESURFACE | R1 | 06-28-332-005 | | | \$ 5,000 | \$ 35 | | | | | | | |
| 15414 | | 4/26/2023 | 407 | | HADLEY CT | | | ALLAN HOLDER | DECK-RESURFACE | R1 | 06-28-332-005 | | | \$ 5,000 | \$ 35 | | | | | | | |
| 15415 | | 4/26/2023 | 1124 | | SOMONAUK ST | | | GEOFFREY RICHEY | FENCE | R1 | 09-05-251-005 | | | \$ 3,800 | \$ 25 | | | | | | | |
| 15416 | | 12/15/2022 | 235 | E | SYCAMORE ST | | | CVEK, ANTHONY | DEMOLITION OF DETACHED GARAGE | R2 | 06-32-276-009 | | | \$ 2,500 | \$ 25 | | | | | | | |
| 15417 | | 4/27/2023 | 354 | | GARDEN CT | | | HAMP PLUMBING | PLUMBING ALTERATION - SANITARY SEWER REPAIR | R1 | 09-05-133-002 | | | \$ 10,000 | \$ 50 | | | | | | | |
| 15418 | | 4/28/2023 | 1475 | S | PEACE RD | | | QUALITY INN | ELECTRICAL REPAIR | C2 | 09-06-125-002 | | | \$ 100 | \$ 50 | | | | | 1 | | |
| 15419 | | 5/1/2023 | 413 | | WYMAN ST | | | KEKOAS ENTERPRISES, INC. for CASEY NORRIS | FENCE | R1 | 09-05-452-022 | | | \$ 3,000 | \$ 25 | | | | | | | |
| 15419 | | 5/1/2023 | 413 | | WYMAN ST | | | KEKOAS ENTERPRISES, INC. for CASEY NORRIS | FENCE | R1 | 09-05-452-022 | | | \$ 3,000 | \$ 25 | | | | | | | |
| 15421 | | 5/4/2023 | 1028 | | BAILEY RD | | | SATURN HEATING COOLING AND ELECTRICAL SERVICES | GENERATOR | R1 | 09-05-228-011 | | | \$ 13,749 | \$ 80 | | | | | | | |

CITY OF SYCAMORE
2023 BUILDING PERMITS YTD

| PERMIT NO | Pt | ISSUED | ADD # | DIR | ST NAME | UNIT | SUB | NAME | IMPROVEMENT INFO | ZONE CODE | PARCEL # | SQ FT | LOT NO | EST \$\$ | TOTAL PERMIT FEE PAID | SF Detached New Construction/ R1 | SF Attached (2 units New Construction Duplex / Townhome) R2 | Multi-Family New Construction - 3 units or more (Condominiums) R3 | SF Detached (New Construction) R4 Rural Residential | Commercial (includes additions & remodeling) R5 R4 and INST/PUB USE | Industrial (includes additions & remodeling) M1, M2 & QRI - Ofc/Research Light Ind. | Lead Replacement Program Enacted 7/2021 |
|-----------|----|-----------|-------|-----|---------------|------|-----|---|---|-----------|---------------|-------|--------|------------|-----------------------|----------------------------------|---|---|---|---|---|---|
| 15422 | | 5/9/2023 | 215 | | NORTH AV | | | WEAVER CONSTRUCTION, INC. for ISRAEL OF GOD CHURCH | REPLACE 2 SETS OF STAIRS & LANDINGS | R3 | 06-32-201-011 | | | \$ 100,000 | \$ - | | | | | | | |
| 15423 | | 5/9/2023 | 435 | | AIRPORT RD | | | WEAVER CONSTRUCTION, INC. for SYCAMORE SCHOOL DISTRICT 427 | SCOREBOARD AT BASEBALL FIELD | PARK | 06-33-400-028 | | | \$ 5,000 | \$ - | | | | | 1 | | |
| 15424 | | 5/3/2023 | 908 | | BIRCHWOOD DR | | | JO SUSINA | FENCE | R1 | 06-31-426-021 | | | \$ 1,200 | \$ 25 | | | | | | | |
| 15425 | | 5/3/2023 | 132 | W | LINCOLN ST | | | C&H PLUMBING | PLUMBING-ALTERATION / SANITARY SEWER REPAIR | R1 | 06-32-456-002 | | | \$ 7,000 | \$ 50 | | | | | | | |
| 15426 | | 5/9/2023 | 327 | S | CALIFORNIA ST | | | ALL CLEAR PLUMBING WORKS | RESIDENTIAL ALTERATION - REPLACE TUB/SHOWER | R2 | 06-32-406-005 | | | \$ 3,000 | \$ 30 | | | | | | | |
| 15427 | | 5/9/2023 | 755 | | FOXPOINTE DR | | | AQUA DESIGNS | PLUMBING ALTERATION - INSTALL LAW IRRIGATION SYSTEM | C3 | 09-06-201-007 | | | \$ 16,768 | \$ 30 | | | | | 1 | | |
| 15429 | | 5/8/2023 | 1200 | | DEKALB AV | | | WEAVER CONSTRUCTION, INC. for CULVERS | ALTERATION-COMMERICAL / CAR vs. BUILDING | C3 | 06-31-452-008 | | | \$ 25,000 | \$ 155 | | | | | 1 | | |
| 15430 | | 5/8/2023 | 934 | | BERKSHIRE CT | | | KENNETH VANKEUREN | FENCE | R1 | 09-06-237-012 | | | \$ 2,600 | \$ 25 | | | | | | | |
| 15431 | | 5/9/2023 | 812 | | STANLEY CT | | | SAMANTHA PETRARCA | FENCE | R1 | 06-29-104-027 | | | \$ 6,980 | \$ 25 | | | | | | | |
| 15431 | | 05/09/23 | 812 | | STANLEY CT | | | SAMANTHA PETRARCA | FENCE | R1 | 06-29-104-027 | | | \$ 6,980 | \$ 25 | | | | | | | |
| 15432 | | 5/11/2023 | 1831 | | FORD ST | | | BRENDA LOPEZ | SHED KIT | R1 | 06-22-333-010 | | | \$ 3,000 | \$ 25 | | | | | | | |
| 15433 | | 5/10/2023 | 139 | E | MAPLEWOOD DR | | | ERIC CARROLL | PRE-MANUFACTURED SHED | R1 | 06-28-155-013 | | | \$ 6,000 | \$ 25 | | | | | | | |
| 15434 | | 5/10/2023 | 1303 | | CAMDEN CT | | | MATTHEW GOHRING | FENCE | R1 | 09-06-225-005 | | | \$ 8,750 | \$ 25 | | | | | | | |
| 15435 | | 5/10/2023 | 1004 | | KRPAN DR | | | AKINO FENCE | FENCE | R1 | 09-06-228-027 | | | \$ 9,160 | \$ 25 | | | | | | | |
| 15436 | | 5/23/2023 | 2111 | | MIDLANDS CT | | | NORTHWESTERN MEDICINE | ALTERATION-COMMERICAL NEW X-RAY ROOM | C3 | 08-01-427-007 | | | \$ 325,000 | \$ 122 | | | | | 1 | | |
| 15437 | | 5/11/2023 | 1339 | | FABIEN DR | | | DEBRA MELIDIS | ALTERATION-RESIDENTIAL / FRONT PORCH HANDRAIL | R1 | 06-30-279-019 | | | \$ 900 | \$ 30 | | | | | | | |
| 15438 | | 5/15/2023 | 845 | | ALDEN DR | | | BARRY ALDRED | BASEMENT-FINISH | R1 | 06-21-278-002 | | | \$ 3,000 | \$ 105 | | | | | | | |
| 15439 | | 5/11/2023 | 2539 | | LILAC LN | | | ZEMAN HOMES / EDGEBROOK MHC | DEMOLITION OF HOME | R1 | 08-01-401-022 | | | \$ 5,100 | \$ 25 | | | | | | | |
| 15440 | | 5/17/2023 | 503 | | PARKSIDE DR | | | PAMELA MATARAGAS | ADDITION-RESIDENTIAL | R1 | 06-33-356-015 | | | \$ 20,000 | \$ 175 | | | | | | | |
| 15441 | | 5/15/2023 | 1117 | | JUNIPER DR | | | J&E RESTORATIONS, PLLC | BASEMENT FINISH | R1 | 09-05-229-021 | | | \$ 39,000 | \$ 225 | | | | | | | |
| 15442 | | 5/12/2023 | 121 | N | MAPLE ST | | | SEAN KELLETT - THINK DRIVEN | ELECTRICAL-ALTERATION | C2 | 06-32-255-040 | | | \$ 5,000 | \$ 80 | | | | | 1 | | |
| 15443 | | 5/17/2023 | 1019 | | NOTTINGHAM RD | | RP3 | SHOODEEN HOMES, LLC | SINGLE FAMILY RESIDENCE | R1 | 09-05-229-013 | 1,766 | 308 | \$ 295,000 | \$ 5,298 | 1 | | | | | | |
| 15444 | | 5/15/2023 | 835 | | MEADOW LN | | | KATE PAULSON | FENCE | R1 | 09-06-226-002 | | | \$ 1,500 | \$ 25 | | | | | | | |
| 15445 | | 5/15/2023 | 418 | | NORTHGATE DR | | | STEVE TOZIER | FENCE | R1 | 06-21-179-021 | | | \$ 6,680 | \$ 25 | | | | | | | |
| 15448 | | 5/19/2023 | 313 | | COLEY PL | | CC1 | CHAMPION BUILDERS | SINGLE FAMILY RESIDENCE | R1 | 06-20-278-010 | 1,817 | 3 | \$ 335,000 | \$ 5,256 | 1 | | | | | | |
| 15450 | | 5/15/2023 | 343 | | GRANT ST | | | LADONNA BHARAT SHANMUGAKARI | FENCE | R2 | 06-32-181-043 | | | \$ 4,650 | \$ 25 | | | | | | | |
| 15451 | | 5/22/2023 | 1432 | | JANET ST | | | TROY JACOBSEN | RESIDENTIAL ALTERATION - ADDITION | R1 | 06-29-152-026 | | | \$ 109,000 | \$ 255 | | | | | | | |
| 15452 | | 5/15/2023 | 1300 | | DEKALB AV | | | DEKALB COUNTY UNITED ACADEMY - SOCCER | TEMPORARY SIGN | C3 | 09-06-201-043 | | | \$ - | \$ - | | | | | 1 | | |
| 15453 | | 5/17/2023 | 527 | | ALDEN DR | | | TIP TOP ROOFING | COVERED PATIO | R1 | 06-21-251-005 | | | \$ 11,000 | \$ 55 | | | | | | | |
| 15454 | | 5/17/2023 | 2231 | S | COVENTRY CIR | | | ED LARSON | FENCE | R1 | 06-21-276-015 | | | \$ 13,775 | \$ 25 | | | | | | | |
| 15455 | | 5/17/2023 | 1038 | | GREENLEAF ST | | | BRIGITTE KRAMER | FENCE | R1 | 09-04-105-013 | | | \$ 7,000 | \$ 25 | | | | | | | |
| 15456 | | 05/17/23 | 1175 | | PENNY LN | | | ALBERT AKINO for LORI LOZEAU | FENCE | R2 | 06-28-301-028 | | | \$ 2,904 | \$ 25 | | | | | | | |
| 15457 | | 05/17/23 | 1173 | | PENNY LN | | | ALBERT AKINO for AGNES STUTTLE | FENCE | R2 | 06-28-301-029 | | | \$ 7,875 | \$ 25 | | | | | | | |
| 15458 | | 5/17/2023 | 150 | | SABIN ST | | | JOSHUA HOFFMAN | FENCE | R1 | 06-33-156-002 | | | \$ 5,370 | \$ 25 | | | | | | | |
| 15460 | | 5/18/2023 | 121 | N | MAPLE ST | | | SEAN KELLETT - THINK DRIVEN | SIGNS / 1 WALL & 1 AWNING | C2 | 06-32-255-040 | | | \$ - | \$ 60 | | | | | 1 | | |
| 15461 | | 5/19/2023 | 341 | W | EXCHANGE ST | | | CALL LANCE FIRST for JOHN & JESSICA BEREK | ALTERATION-RESIDENTIAL / BASEMENT STORAGE | R3 | 06-32-251-008 | | | \$ 22,000 | \$ 185 | | | | | | | |
| 15462 | | 5/19/2023 | 1300 | | DEKALB AV | | | SYCAMORE SCHOOL DISTRICT #427 / NORTH ELEMENTARY SCHOOL CLOTHING & TOY RESALE | TEMPORARY SIGN | C3 | 09-06-201-043 | | | \$ - | \$ - | | | | | 1 | | |
| 15463 | | 5/19/2023 | 1752 | | FULTON LN | | | PENNY LANE DECKS for ERIC & DENISE LEIFEIF | DECK | R1 | 09-05-402-019 | | | \$ 15,000 | \$ 35 | | | | | | | |
| 15464 | | 5/19/2023 | 336 | | ALDEN DR | | | JENNA BAUDOUIN | FENCE | R1 | 06-21-180-007 | | | \$ 12,010 | \$ 25 | | | | | | | |

CITY OF SYCAMORE
2023 BUILDING PERMITS YTD

| PERMIT NO | Pt | ISSUED | ADD # | DIR | ST NAME | UNIT | SUB | NAME | IMPROVEMENT INFO | ZONE CODE | PARCEL # | SQ FT | LOT NO | EST \$\$ | TOTAL PERMIT FEE PAID | SF Detached New Construction) R1 | SF Attached (2 units New Construction Duplex / Townhome) R2 | Multi-Family New Construction - 3 units or more Condos/Rentals) R3 | SF Detached New Construction) R4 Rural Residential | Commercial (includes Additions & remodeling) R5 R6 and INSTITUTE USE | Industrial (includes additions & remodeling) M1, M2 & QRI - | Lead Replacement Program Enacted 7/2021 |
|-----------|------|-----------|---------|------|-----------------|------|-------|--|---|-----------|---------------|-------|--------|------------|-----------------------|----------------------------------|---|--|--|--|---|---|
| 15465 | | 5/24/2023 | 934 | | GREENLEAF ST | | RP3 | SHODEEN HOMES, LLC | SINGLE FAMILY RESIDENCE | R1 | 09-04-105-017 | 1,866 | 5303 | \$ 272,000 | \$ 5,303 | 1 | | | | | | |
| 15466 | | 5/24/2023 | 1112 | | JUNIPER DR | | RP3 | SHODEEN HOMES, LLC | SINGLE FAMILY RESIDENCE | R1 | 09-05-231-023 | 1,806 | 264 | \$ 254,000 | \$ 5,304 | 1 | | | | | | |
| 15467 | | 5/19/2023 | 746 | | PARK AV | | | CYNTHIA CAMPBELL | ELECTRICAL SERVICE-UPGRADE | R2 | 06-32-384-007 | | | \$ 417 | \$ 60 | | | | | | | |
| 15468 | | 5/22/2023 | 124 | | NORTHGATE DR | | | BACKYARD IMAGES | REPLACE DECKING & RAILS | R1 | 06-21-179-030 | | | \$ 16,000 | \$ 30 | | | | | | | |
| 15468 | | 05/22/23 | 124 | | NORTHGATE DR | | | BACKYARD IMAGES | REPLACE DECKING & RAILS | R1 | 06-21-179-030 | | | \$ 16,000 | \$ 30 | | | | | | | |
| 15469 | VOID | 5/22/2003 | 1117 | VOID | COMMERCIAL ST | VOID | VOID | JANICE TRIPP | FENCE | R1 | 09-05-253-013 | VOID | VOID | \$ 1,618 | \$ 25 | | | | | | | |
| 15470 | | 06/05/23 | 2690 | | DEKALB AV | | | OAKLAND & SYCAMORE RD. DEVELOPMENT / JOHN PAPPAS | ALTERATION-COMMERCIAL | C3 | 08-12-277-037 | | | \$ 50,000 | \$ 5,944 | | | | | 1 | | |
| 15471 | | 5/22/2023 | 1319 | | CAMDEN CT | | | MAGIC FENCE, INC. | FENCE | R1 | 09-06-225-003 | | | \$ 550 | \$ 25 | | | | | | | |
| 15472 | | 06/28/23 | 546-548 | | ANJALI CT | | | YOUSSEI CUSTOM HOMES, LLC | TWO FAMILY RESIDENTIAL - DUPLIES | R2 | 06-31-327-005 | | | \$ 300,000 | \$ 10,312 | | 1 | | | | | |
| 15473 | | 06/28/23 | 538-540 | | ANJALI CT | | | YOUSSEI CUSTOM HOMES, LLC | TWO FAMILY RESIDENTIAL - DUPLIES | R2 | 06-32-327-006 | | | \$ 300,000 | \$ 10,312 | | 1 | | | | | |
| 15474 | | 05/19/23 | 336 | | ALDEN DR | | | JEANNA BAUDOUIN | FENCE | R1 | 06-21-180-007 | | | \$ 12,020 | \$ 25 | | | | | | | |
| 15474 | | 06/02/23 | 1848 | | FORD ST | | SC1U2 | ALEX HAWKINS & ALISON KELLY | SINGLE FAMILY RESIDENCE | R1 | 06-22-333-012 | 1,970 | 772 | \$ 350,000 | \$ 5,279 | 1 | | | | | | |
| 15476 | | 05/23/23 | 212 | E | STATE ST | | | JUAN VASQUEZ | FENCE | C3 | 06-32-285-002 | | | \$ 6,918 | \$ 25 | | | | | 1 | | |
| 15477 | | 5/23/2023 | 2056 | | COLTONVILLE RD | | | JENNIFER PRICE / ELEVATE | SIGN / 1 GROUND / 1 WALL | M1 | 08-01-279-003 | | | \$ - | \$ 80 | | | | | | 1 | |
| 15477 | | 05/23/23 | 2056 | | COLTONVILLE RD | | | JENNIFER PRICE / ELEVATE | SIGN / 1 GROUND / 1 WALL | M1 | 08-01-279-003 | | | \$ - | \$ 60 | | | | | | | 1 |
| 15478 | | 05/24/23 | 134 | W | STATE ST | | | MARK KASCHUBE | SIGN-PROJECTING | C2 | 06-32-260-004 | | | \$ - | \$ 30 | | | | | 1 | | |
| 15479 | | 05/24/23 | 1851 | | PERRY CT | | | JOEL DAVIDSON SERVICES | DECK & PERGOLA | R1 | 09-05-378-031 | | | \$ 10,000 | \$ 35 | | | | | | | |
| 15480 | | 5/25/2023 | 140 | | CENTER CROSS ST | | | DORR PLUMBING & HEATING | PLUMBING ALTERATION - SANITARY SEWER REPAIR/REPLACEMENT | R2 | 06-32-156-011 | | | \$ 8,500 | \$ 50 | | | | | | | |
| 15481 | | 5/26/2023 | 1027 | | DEVONSHIRE DR | | | MURKESH DESI | FENCE | R1 | 09-06-277-029 | | | \$ 10,500 | \$ 25 | | | | | | | |
| 15483 | | 5/31/2023 | 312 | | PARK AV | | | CHRIS PETERSON | DECK | R3 | 06-32-332-005 | | | \$ 2,000 | \$ 35 | | | | | | | |
| 15483 | | 05/31/23 | 312 | | PARK AV | | | CHRIS PETERSON | DECK | R3 | 06-32-332-005 | | | \$ 2,000 | \$ 35 | | | | | | | |
| 15484 | | 06/05/23 | 500 | | MARY ANN CIRCLE | | RP3 | SHODEEN HOMES, LLC | SINGLE FAMILY RESIDENCE | R1 | 09-04-151-023 | 1,613 | 234 | \$ 269,000 | \$ 5,215 | 1 | | | | | | |
| 15485 | | 06/06/23 | 474 | | MARY ANN CIRCLE | | RP3 | SHODEEN HOMES, LLC | SINGLE FAMILY RESIDENCE | R1 | 09-04-151-022 | 1,786 | 233 | \$ 261,300 | \$ 5,301 | 1 | | | | | | |
| 15486 | | 06/06/23 | 525 | | FAIRWAY LN | | RP3 | SHODEEN HOMES, LLC | SINGLE FAMILY RESIDENCE | R1 | 09-04-104-009 | 2,597 | 357 | \$ 300,100 | \$ 5,428 | 1 | | | | | | |
| 15487 | | 06/06/23 | 283 | | COLEY PL | | CC1 | CHAMPION BUILDERS | SINGLE FAMILY RESIDENCE | R1 | 06-20-276-003 | 1,790 | 1790 | \$ 335,000 | \$ 5,247 | 1 | | | | | | |
| 15489 | | 5/31/2023 | 854 | | MEADOW LN | | | ALLISON PONDELICK | RESIDENTIAL-ALTERATION / WINDOWS & PATIO DOOR | R1 | 09-06-227-004 | | | \$ 3,858 | \$ 30 | | | | | | | |
| 15489 | | 05/31/23 | 854 | | MEADOW LN | | | ALLISON PONDELICK | RESIDENTIAL-ALTERATION / WINDOWS & PATIO DOOR | R1 | 09-06-227-004 | | | \$ 3,858 | \$ 30 | | | | | | | |
| 15490 | | 06/01/23 | 590 | | VIKING DR | | | DON & KIM HEINISCH | FENCE | R1 | 06-20-376-010 | | | \$ 3,790 | \$ 25 | | | | | | | |
| 15491 | | 06/01/23 | 571 | S | PEACE RD | | | BEOMAR SPRINKLER SYSTEMS, INC. | IRRIGATION INSTALLATION | C3 | 06-31-300-013 | | | \$ 15,400 | \$ 50 | | | | | 1 | | |
| 15492 | | 06/01/23 | 109 | | ALMA ST | | | AKINO FENCE | FENCE | R1 | 06-32-153-002 | | | \$ 3,738 | \$ 25 | | | | | | | |
| 15493 | | 06/02/23 | 2690 | | DEKALB AV | | | BANNER UP SIGNS / HOTWORX | SIGNS / 1 WALL & 1 GROUND/POLE | C3 | 08-12-277-037 | | | \$ - | \$ 60 | | | | | 1 | | |
| 15494 | | 06/05/23 | 127 | | RESTON CT | | | ERNESTO & SANDRA RIVERA | FENCE | R1 | 09-05-454-009 | | | \$ 6,500 | \$ 25 | | | | | | | |
| 15495 | | 06/05/23 | 255 | | MASON CT | | | CHRISTINA SEGRET | FENCE | R3 | 06-32-103-033 | | | \$ 4,000 | \$ 25 | | | | | | | |
| 15496 | | 06/06/23 | 1235 | | FORD ST | | | COLLEEN KRASKIEWICZ | FENCE | R1 | 06-28-327-007 | | | \$ 9,000 | \$ 25 | | | | | | | |
| 15497 | | 06/08/23 | 2349 | S | COVENTRY CIR | | | BLAKE POWERS | FENCE | R1 | 06-21-276-003 | | | \$ 5,400 | \$ 25 | | | | | | | |
| 15498 | | 06/08/23 | 303 | W | STATE ST | | | PAINTED LADY COLLECTION | SIGN / 1 CANVAS | C2 | 06-32-255-055 | | | \$ 3,000 | \$ 30 | | | | | 1 | | |
| 15599 | | 06/09/23 | 337 | N | MAPLE ST | | | BLARE ROLAND for JOEL FRENCH | DECK | R3 | 06-32-205-024 | | | \$ 7,500 | \$ 35 | | | | | | | |
| 15600 | | 06/20/23 | 1367 | | SANDCASTLE DR | | | ZACH ZIELNSKI | RESIDENTIAL ALTERATION - 3 SEASON ROOM | R1 | 06-30-251-028 | | | \$ 45,000 | \$ 225 | | | | | | | |
| 15601 | | 06/09/23 | 374 | | CHAUTAUQUA LN | | | STEPHANY LOTITO | DECK | R1 | 09-05-429-008 | | | \$ 20,000 | \$ 35 | | | | | | | |
| 15602 | | 06/23/23 | 429 | E | BECKER PL | | | TITAN SOLAR POWER IL, INC. | SOLAR PV | R1 | 09-05-276-004 | | | \$ 27,600 | \$ 213 | | | | | | | |
| 15603 | | 06/22/23 | 1380 | | SANDCASTLE DR | | | SWIM SCHACK, INC. | SWIMMING POOL - INGROUND | R1 | 06-30-251-020 | | | \$ 70,000 | \$ 135 | | | | | | | |
| 15604 | | 06/13/23 | 437 | E | BECKER PL | | | RAINMAKERS IRRIGATION & MAINT., INC. | PLUMBING ALTERATION - INSTALL LAWN IRRIGATION SYSTEM | R1 | 09-05-276-005 | | | \$ 540 | \$ 30 | | | | | | | |
| 15605 | | 06/14/23 | 215 | N | FAIR ST | | | ALARM DETECTION SERVICES / SYCAMORE CONTAINERS | FIRE ALARM RADIO UPGRADE | M2 | 06-32-102-001 | | | \$ 600 | \$ 100 | | | | | | | 1 |

CITY OF SYCAMORE
2023 BUILDING PERMITS YTD

| PERMIT NO | Pt | ISSUED | ADD # | DIR | ST NAME | UNIT | SUB | NAME | IMPROVEMENT INFO | ZONE CODE | PARCEL # | SQ FT | LOT NO | EST \$ | TOTAL PERMIT FEE PAID | SF Detached (New Construction) R1 | SF Attached (2 units New Construction Duplex / Townhome) R2 | Multi-Family (New Construction - 3 units or more Condos/Rentals) R3 | SF Detached (New Construction) R4 Rural Residential | Commercial (includes additions & remodeling) C1-C4 and INST/PUB USE | Industrial (includes additions & remodeling) I1-I3 and R&R Light Ind. | Lead Replacement Program Enacted 7/2021 |
|-----------|----|----------|---------|-----|-----------------|------|-------|--|--|-----------|---------------|-------|--------|------------|-----------------------|-----------------------------------|---|---|---|---|---|---|
| 15606 | | 06/14/23 | 336 | | GEORGE ST | | | CHAD JOHNSON | FENCE | R1 | 09-05-332-011 | | | \$ 6,600 | \$ 25 | | | | | | | |
| 15607 | | 06/14/23 | 821 | | ALDEN DR | | | CHRISTOPHER R. RUSSO | FENCE | R1 | 06-21-278-005 | | | \$ 5,850 | \$ 25 | | | | | | | |
| 15608 | | 07/05/23 | 1026 | | POTOMAC AV | | SC1U1 | JRH CONSTRUCTION CORP. | SINGLE FAMILY RESIDENCE | R1 | 06-22-333-004 | 2,037 | 74 | \$ 450,000 | \$ 5,284 | 1 | | | | | | |
| | | | | | | | | | PLUMBING ALTERATION - WATER SERVICE REPAIR/REPLACEMENT | R1 | 06-32-356-019 | | | \$ 5,800 | \$ 50 | | | | | | | |
| 15609 | | 06/16/23 | 611 | | CARLSON ST | | | A&P PLUMBING & SEWER | DECK | R1 | 09-05-231-030 | | | \$ 3,500 | \$ 35 | | | | | | | |
| 15610 | | 07/10/23 | 1012 | | JUNIPER DR | | | ADAM CARNELL | SHED | R2 | 06-32-380-009 | | | \$ 100 | \$ 25 | | | | | | | |
| 15611 | | 06/21/23 | 251 | | CHARLES ST | | | DEVIN HANKS | DECK | R2 | 09-05-105-032 | | | \$ 5,000 | \$ 35 | | | | | | | |
| 15612 | | 06/21/23 | 940 | | SCOTT DR | | | JJ FINNAN | FENCE | R3 | 06-32-332-005 | | | \$ 3,000 | \$ 25 | | | | | | | |
| 15613 | | 06/21/23 | 312 | | PARK AV | | | DYLAN SILBAUGH | FENCE | R3 | 08-01-415-015 | | | \$ 8,178 | \$ 25 | | | | | | | |
| 15614 | | 06/22/23 | 2411 | | MEADOW CREEK DR | | | JESSICA JORGENSEN | FENCE | R1 | 06-30-280-004 | | | \$ 7,500 | \$ 25 | | | | | | | |
| 15615 | | 06/22/23 | 1135 | | SUSAN ST | | | KATHY RICE | FENCE | R1 | 06-28-330-010 | | | \$ 2,800 | \$ 25 | | | | | | | |
| 15616 | | 06/22/23 | 223 | | RACHEL CIR | | | EMILY VERDONE | DECK | R1 | 09-06-253-020 | | | \$ 4,000 | \$ 35 | | | | | | | |
| 15617 | | 07/14/23 | 1104 | N | YORKSHIRE DR | | | DAVID & KATIE KIRKPATRICK | BASEMENT FINISH | R1 | 06-29-104-020 | | | \$ 40,000 | \$ 255 | | | | | | | |
| 15618 | | 06/30/23 | 727 | | FREED RD | | | RICK ERICSON | SUNRUN INSTALLATION SERVICES, INC. | R1 | 06-28-329-029 | | | \$ 19,238 | \$ 172 | | | | | | | |
| 15619 | | 02/26/23 | 1157 | | MARTIN ST | | | ROMULO MARTINEZ | DECK | R1 | 06-32-308-008 | | | \$ 8,450 | \$ 25 | | | | | | | |
| 15620 | | 07/12/23 | 525 | | CENTER AV | | | FINNEY HOMES | SINGLE FAMILY RESIDENCE | R1 | 09-04-153-023 | 2322 | 186 | \$ 340,000 | \$ 5,332 | 1 | | | | | | |
| 15621 | | 06/28/23 | 665 | | IVAN DR | | KPE4 | JOHN FREIBERG | SWIMMING POOL - IN GROUND | R1 | 06-21-251-010 | | | \$ 70,000 | \$ 135 | | | | | | | |
| 15622 | B | 07/26/23 | 2233 | | SURREY ST | | | JOHN FREIBERG | FENCE | R1 | 06-21-251-010 | | | \$ 5,500 | \$ 25 | | | | | | | |
| | | | | | | | | SUNRUN INSTALLATION SERVICES, INC. | SOLAR PV | R1 | 09-05-212-003 | | | \$ 34,628 | \$ 225 | | | | | | | |
| 15624 | | 06/22/23 | 916 | | LOCUST ST | | | SYCAMORE PARK DISTRICT / SIP n SAVOR TASTE EVENT | TEMPORARY SIGN | C3 | 09-06-201-043 | | | \$ - | \$ - | | | | | 1 | | |
| 15625 | | 06/27/23 | 1300 | | DEKALB AV | | | JONI PETERSON for 35.35 | SIGN / 1 WALL | C3 | 06-20-400-030 | | | \$ - | \$ 30 | | | | | 1 | | |
| 15626 | | 06/27/23 | 265 | W | PEACE RD | | | MAKERS COLLECTIVE | DECK | R1 | 06-32-456-009 | | | \$ 14,000 | \$ 35 | | | | | | | |
| 15627 | | 07/10/23 | 804 | | SOMONAUK ST | | | DOUG ZIELINSKI | DECK | R1 | 06-21-203-003 | | | \$ 7,000 | \$ 35 | | | | | | | |
| 15628 | | 07/03/23 | 1551 | | BRIGHTON WAY | | | BRIAN SWANSON | ADDITION-RESIDENTIAL | R1 | 09-06-181-005 | | | \$ 6,000 | \$ 105 | | | | | | | |
| 15629 | | 07/03/23 | 1551 | | LONGWOOD DR | | | JOSH KLASSEN | FENCE | R1 | 09-06-181-025 | | | \$ 1,635 | \$ 25 | | | | | | | |
| 15630 | | 06/29/23 | 1553 | | MEADOWBROOK CT | | | VICTOR WHITE | FENCE | R1 | 09-06-181-025 | | | \$ 1,635 | \$ 25 | | | | | | | |
| 15631 | | 06/29/23 | 318 | | PLYMOUTH CT | | | RUSSELL LEGG | FENCE | R1 | 06-32-276-002 | | | \$ 7,554 | \$ 25 | | | | | | | |
| | | | | | | | | DEKALB COUNTY GARDEN WALK | TEMPORARY SIGN | C3 | 08-12-426-006 | | | \$ - | \$ - | | | | | 1 | | |
| 15632 | | 06/29/23 | 2270 | | OAKLAND DR | | | BURKART HOMES | DECK | R1 | 09-05-402-009 | | | \$ 25,000 | \$ 35 | | | | | | | |
| 15633 | | 07/10/23 | 1719 | | THURLOW ST | | | BRIAN BOBIK | FENCE | R1 | 06-30-251-027 | | | \$ 10,000 | \$ 25 | | | | | | | |
| 15634 | | 06/29/23 | 1361 | | SANDCASTLE DR | | | NESPER SIGN / WAHLBURGERS AT HYVEE | SIGN | C3 | 08-12-277-032 | | | \$ - | \$ 30 | | | | | 1 | | |
| 15635 | | 06/29/23 | 2700 | | DEKALB AV | | | HERCULES CONSTRUCTION, LLC for JEFFERY NEILSEN | DETACHED GARAGE | R1 | 09-05-379-018 | | | \$ 58,939 | \$ 238 | | | | | | | |
| 15636 | | 07/13/23 | 405 | | BETHANY RD | | | CERTASUN | SOLAR PV | R1 | 09-04-157-007 | | | \$ 23,282 | \$ 192 | | | | | | | |
| 15638 | | 07/03/23 | 1129 | | PARKSIDE DR | | | CERTASUN | SOLAR PV | R1 | 06-29-154-003 | | | \$ 36,400 | \$ 225 | | | | | | | |
| 15639 | | 10/14/22 | 1342 | | LARSON ST | | | SUNRUN INSTALLATION SERVICES, INC. | SOLAR PV | R1 | 09-05-400-013 | | | \$ 26,933 | \$ 210 | | | | | | | |
| 15640 | | 07/13/23 | 1339 | | WILD ST | | | SUNRUN INSTALLATION SERVICES, INC. | SOLAR PV | R2 | 08-01-254-016 | | | \$ 20,007 | \$ 176 | | | | | | | |
| 15641 | | 07/13/23 | 1625 | | OAK LN | | | SUNRUN INSTALLATION SERVICES, INC. | SOLAR PV | R2 | 09-05-206-019 | | | \$ 19,238 | \$ 172 | | | | | | | |
| 15642 | | 07/17/23 | 1043 | | COMMERCIAL ST | | | CARI ELYEA | FENCE | R1 | 08-01-279-002 | | | \$ 4,000 | \$ 25 | | | | | | | |
| 15643 | | 07/05/23 | 2060 | | COLTONVILLE RD | | | CHARLES WOODS | FENCE | R1 | 06-21-456-015 | | | \$ 10,600 | \$ 25 | | | | | | | |
| 15644 | | 07/05/23 | 1768 | | C.L. HUDSON ST | | | MICHAEL & PATRICIA JUOPAS | FENCE | R1 | 06-31-427-003 | | | \$ 7,500 | \$ 25 | | | | | | | |
| 15645 | | 07/05/23 | 313 | | WEST ST | | | TWO FAMILY RESIDENTIAL - DUPLIES | DUPLIES | R2 | 06-31-327-011 | 2,906 | 41 | \$ 300,000 | \$ 10,312 | 1 | | | | | | |
| 15647 | | 07/11/23 | 444-446 | | ANJALI CT | | SC | YOUSSI CUSTOM HOMES, LLC | DUPLIES | R2 | 06-31-327-011 | 2,906 | 42 | \$ 300,000 | \$ 10,312 | 1 | | | | | | |
| 15648 | | 07/11/23 | 436-438 | | ANJALI CT | | SC | YOUSSI CUSTOM HOMES, LLC | DUPLIES | R2 | 06-31-327-011 | 2,906 | 42 | \$ 300,000 | \$ 10,312 | 1 | | | | | | |
| 15649 | | 07/18/23 | 265 | W | PEACE RD | | | KG CENTER, LLC | ALTERATION-COMMERCIAL | C3 | 06-20-400-031 | | | \$ 35,000 | \$ 5,848 | | | | | 1 | | |
| 15650 | | 07/06/23 | 2500 | | BETHANY RD | | | ADDITION TO FIRE ALARM SYSTEM | SYSTEM | C2 | 08-02-200-001 | | | \$ 6,385 | \$ - | | | | | 1 | | |
| 15652 | | 07/12/23 | 1012 | | BAILEY RD | | RP3 | FOX VALLEY FIRE & SAFETY | SINGLE FAMILY RESIDENCE | R1 | 09-05-228-013 | 1,804 | 335 | \$ 231,750 | \$ 5,304 | 1 | | | | | | |
| 15653 | | 07/10/23 | 157 | | VISTA TERRACE | | | SHODEEN HOMES, LLC | PLUMBING ALTERATION - SANITARY SEWER REPAIR | R1 | 06-33-156-004 | | | \$ 4,200 | \$ 50 | | | | | | | |
| 15654 | | 07/12/23 | 1926 | | TRUMAN ST | | | ILLINOIS SEWER & DRAIN, INC. | FENCE | R1 | 06-22-328-004 | | | \$ 7,764 | \$ 25 | | | | | | | |
| | | | | | | | | JONOTHAN MCDANIEL | | | | | | | | | | | | | | |

CITY OF SYCAMORE
2023 BUILDING PERMITS YTD

| PERMIT NO | Pt | ISSUED | ADD # | DIR | ST NAME | UNIT | SUB | NAME | IMPROVEMENT INFO | ZONE CODE | PARCEL # | SQ FT | LOT NO | EST \$\$ | TOTAL PERMIT FEE PAID | SF Detached (New Construction) R1 | SF Attached (2 units New Construction Duplex / Townhome) R2 | Multi-Family (New Construction - 3 units or more Condos/Rentals) R3 | SF Detached (New Construction) R4 Rural Residential | Commercial (includes additions & remodeling) C1-C4 and INST/PUB USE | Industrial (includes additions & remodeling) M1, M2, M3, M4, M5, M6, M7, M8, M9, M10, M11, M12, M13, M14, M15, M16, M17, M18, M19, M20, M21, M22, M23, M24, M25, M26, M27, M28, M29, M30, M31, M32, M33, M34, M35, M36, M37, M38, M39, M40, M41, M42, M43, M44, M45, M46, M47, M48, M49, M50, M51, M52, M53, M54, M55, M56, M57, M58, M59, M60, M61, M62, M63, M64, M65, M66, M67, M68, M69, M70, M71, M72, M73, M74, M75, M76, M77, M78, M79, M80, M81, M82, M83, M84, M85, M86, M87, M88, M89, M90, M91, M92, M93, M94, M95, M96, M97, M98, M99, M100 | Lead Replacement Program Enacted 7/2021 |
|-----------|----|-----------|-------|-----|-------------------|------|-----|---|---|-----------|---------------|-------|--------|------------|-----------------------|-----------------------------------|---|---|---|---|---|---|
| 15657 | | 07/13/23 | 475 | E | CLOVERLANE DR | | | PARAMOUNT FENCE | FENCE | R1 | 09-05-226-009 | | | \$ 12,043 | \$ 25 | | | | | | | |
| 15658 | | 07/17/23 | 330 | | PARKSIDE DR | | | SUNRUN INTALLATION SERVICES, INC. | SOLAR PV | R1 | 06-33-306-028 | | | \$ 16,929 | \$ 160 | | | | | | | |
| 15659 | | 07/13/23 | 1817 | | SOMONAUK ST | | | ERIC A. RAY | FENCE | R1 | 09-05-380-106 | | | \$ 4,000 | \$ 25 | | | | | | | |
| 15660 | | 07/13/23 | 214 | | RACHEL CIR | | | NATALIE KNORR & PAUL CUMMINGS | FENCE | R1 | 06-28-333-012 | | | \$ 3,200 | \$ 25 | | | | | | | |
| 15661 | | 11/03/24 | 2207 | | HIGHLAND DR | | | SUNRUN INSTALLATION SERVICES, INC. | SOLAR PV | R2 | 08-01-254-018 | | | \$ 2,207 | \$ 145 | | | | | | | |
| 15662 | | 07/17/23 | 711 | | EMMERT DR | | | CHARLES TULL | SHED | R1 | 09-06-227-006 | | | \$ 475 | \$ 25 | | | | | | | |
| 15663 | | 07/17/23 | 403 | | HERON CREEK DR | | | MICHELLE SCALLY & KEN VILLANN | FENCE | R1 | 06-21-376-014 | | | \$ 3,250 | \$ 25 | | | | | | | |
| 15664 | | 07/17/23 | 1454 | | WILLIAM ST | | | PAUL WATSON | FENCE | R1 | 06-29-147-002 | | | \$ 2,980 | \$ 25 | | | | | | | |
| 15665 | | 07/17/23 | 531 | | CLOVERLANE DR | | | DEB SCHELKOPF | FENCE | R1 | 09-04-103-005 | | | \$ 15,000 | \$ 25 | | | | | | | |
| 15666 | | 07/21/23 | 291 | | COLEY PL | | CC | CHAMPION BUILDERS | SINGLE FAMILY RESIDENCE | R1 | 06-20-276-004 | 1,979 | 2 | \$ 325,000 | \$ 5,290 | 1 | | | | | | |
| 15667 | | 07/18/23 | 501 | N | CROSS ST | | | CITY OF SYCAMORE-PUBLIC WORKS DEPT. | DEMOLITION OF WASTEWATER TREATMENT PLANT | PUB | 06-29-300-016 | | | \$ 199,180 | \$ - | | | | | 1 | | |
| 15668 | | 07/21/23 | 1314 | | PARIS BLVD | | HT | RUD CUSTOM HOMES | SINGLE FAMILY RESIDENCE | R1 | 06-30-281-011 | 2,100 | 19 | \$ 450,000 | \$ 5,293 | 1 | | | | | | |
| 15669 | | 07/17/23 | 425 | | HOME ST | | | AQUA CITY PLUMBING | PLUMBING ALTERATION - SANITARY SEWER REPAIR/REPLACEMENT | R1 | 06-33-352-017 | | | \$ 7,000 | \$ 50 | | | | | | | |
| 15673 | | 07/21/23 | 309 | N | CALIFORNIA ST | | | KATHLEEN SARZYENSKI | GROUND | R3 | 06-32-204-018 | | | \$ 11,000 | \$ 135 | | | | | | | |
| 15673 | B | 07/21/23 | 309 | N | CALIFORNIA ST | | | KATHLEEN SARZYENSKI | FENCE | R3 | 06-32-204-018 | | | \$ 8,900 | \$ 25 | | | | | | | |
| 15675 | | 07/21/23 | 1784 | | C.L HUDSON ST | | | GEORGE FOLSOM | FENCE | R1 | 06-21-456-017 | | | \$ 10,850 | \$ 25 | | | | | | | |
| 15676 | | 07/21/23 | 235 | E | TURNER PLC | | | SHODEEN HOMES, LLC | FENCE | R1 | 09-05-226-019 | | | \$ 9,600 | \$ 25 | | | | | | | |
| 15677 | | 07/21/23 | 243 | E | TURNER PLC | | | SHODEEN HOMES, LLC | FENCE | R1 | 09-05-226-018 | | | \$ 7,000 | \$ 25 | | | | | | | |
| 15678 | | 07/21/23 | 325 | E | CLOVERLANE DR | | | SHODEEN HOMES, LLC | FENCE | R1 | 09-05-226-016 | | | \$ 2,600 | \$ 25 | | | | | | | |
| 15679 | | 07/21/23 | 317 | E | CLOVERLANE DR | | | SHODEEN HOMES, LLC | FENCE | R1 | 09-05-226-017 | | | \$ 2,600 | \$ 25 | | | | | | | |
| 15682 | | 07/21/23 | 208 | W | RECKITT ST | | | DELT'S ELECTRIC | ELECTRIC SERVICE - UPGRADE | R1 | 09-05-204-011 | | | \$ 2,500 | \$ 60 | | | | | | | |
| 15684 | | 07/25/23 | 150 | | SABIN ST | | | JOSHUA HOFFMAN | SWIMMING POOL - ABOVE GROUND | R1 | 06-33-156-002 | | | \$ 8,300 | \$ 135 | | | | | | | |
| 15690 | | 07/27/23 | 2231 | | LUTHER LOWELL LN | | | STEPHEN DALVALLE | FENCE | R1 | 06-21-179-017 | | | \$ 10,800 | \$ 25 | | | | | | | |
| 15698 | | 08/02/23 | 411 | E | STATE ST | | | JOSHUA HARGRAVE / POWERHOUSE RETAIL SERVICES, LLC | ALTERATION-COMMERCIAL | C2 | 06-33-154-012 | | | \$ 35,000 | \$ 285 | | | | | 1 | | |
| 15637 | | 07/11/23 | 2700 | | DEKALB AV | | | ERIC VOISE / HY-VEE / WAHLBURGERS | ALTERATION-COMMERCIAL | C3 | 08-12-277-032 | | | \$ 129,500 | \$ 793 | | | | | 1 | | |
| 15672 | | 7/25/2023 | 1203 | | COOLIDGE CT | | RP3 | SHODEEN HOMES, LLC | SINGLE FAMILY RESIDENCE | R1 | 09-05-276-015 | 1,866 | 226 | \$ 387,000 | \$ 5,253 | 1 | | | | | | |
| 15674 | | 7/25/2023 | 1030 | | GREENLEAF ST | | RP3 | SHODEEN HOMES, LLC | SINGLE FAMILY RESIDENCE | R1 | 09-04-105-014 | 1,613 | 236 | \$ 325,000 | \$ 5,215 | 1 | | | | | | |
| 15689 | | 8/1/2023 | 1821 | | LETHA WESTGATE DR | | HCE | IRON BORYLA | SINGLE FAMILY RESIDENCE | R1 | 06-20-376-013 | 2,150 | 42 | \$ 450,000 | \$ 5,311 | 1 | | | | | | |
| 15686 | | 7/31/2023 | 339 | E | BECKER PL | | | STATELINE SOLAR | SOLAR PV | R1 | 09-05-277-004 | | | \$ 23,200 | \$ 191 | | | | | | | |
| 15692 | | 7/28/2023 | 926 | | GREENLEAF ST | | | NICHOLAS STANFA | FENCE | R1 | 09-04-105-018 | | | \$ 5,300 | \$ 25 | | | | | | | |
| 15695 | | 7/31/2023 | 1870 | | PERRY CT | | | LUKE BUTLER IMPROVEMENTS | EGRESS WINDOW | R1 | 09-05-380-012 | | | \$ 4,500 | \$ 30 | | | | | | | |
| 15699 | | 8/2/2023 | 1315 | | ARNEITA ST | | | KALYN CONDON | FENCE | R1 | 06-28-183-008 | | | \$ 6,000 | \$ 25 | | | | | | | |
| 15693 | | 8/1/2023 | 205 | E | MAPLEWOOD DR | | | SUNRUN INSTALLATION SERVICES, INC. | SOLAR PV | R1 | 06-28-182-008 | | | \$ 21,546 | \$ 183 | | | | | | | |
| 15694 | | 8/1/2023 | 1134 | | SOMONAUK ST | | | SUNRUN INSTALLATION SERVICES, INC. | SOLAR PV | R1 | 09-05-251-007 | | | \$ 5,387 | \$ 105 | | | | | | | |
| 15701 | | 8/4/2023 | 711 | | FREED RD | | | SUNRUN INSTALLATION SERVICES, INC. | SOLAR PV | R1 | 06-29-104-003 | | | \$ 12,312 | \$ 137 | | | | | | | |
| 15621 | B | 8/9/2023 | 665 | | IVAN DR | | | FINNEY HOMES | BASEMENT-FINISH | R1 | 09-04-153-023 | | | \$ 14,000 | \$ 186 | | | | | | | |
| 15691 | | 7/31/2023 | 1814 | | LETHA WESTGATE DR | | | PRIMARY SERVICE ELECTRIC, INC. | GENERATOR | R1 | 06-20-328-007 | | | \$ 12,000 | \$ 80 | | | | | | | |
| 15704 | | 8/8/2023 | 2308 | | SURREY ST | | | PATRICK KLEIN | BASEMENT-FINISH | R1 | 06-21-203-009 | | | \$ 15,000 | \$ 180 | | | | | | | |
| 15683 | | 7/25/2023 | 1241 | | WILD ST | | | SUNRUN INSTALLATION SERVICES, INC. | SOLAR PV | R1 | 09-05-256-030 | | | \$ 17,699 | \$ 164 | | | | | | | |
| 15700 | | 8/4/2023 | 1020 | S | CROSS ST | | | BRYAN KUHN PLUMBING | PLUMBING ALTERATION - SANITARY SEWER REPAIR/REPLACEMENT | R2 | 06-32-375-013 | | | \$ 9,000 | \$ 50 | | | | | | | |
| 15685 | | 7/24/2023 | 1367 | | SANDCASTLE DR | | | BRIAN M. KUCHOY | SHED | R3 | 06-30-251-028 | | | \$ 7,500 | \$ 25 | | | | | | | |

CITY OF SYCAMORE
2023 BUILDING PERMITS YTD

| PERMIT NO | Pt | ISSUED | ADD # | DIR | ST NAME | UNIT | SUB | NAME | IMPROVEMENT INFO | ZONE CODE | PARCEL # | SQ FT | LOT NO | EST \$\$ | TOTAL PERMIT FEE PAID | SF Detached New Construction) R1 | SF Attached (2 units New Construction Duplex / Townhome) R2 | Multi-Family (New Construction - 3 units or more Condos/Rentals) R3 | SF Detached New Construction) R4 Rural Residential | Commercial (includes additions & remodeling) R5 R4 and INST/PUB USE | Industrial (includes additions & remodeling) M1, M2 & QRI - Office/Research Light Ind. | Lead Replacement Program Enacted 7/2021 |
|-----------|----|-----------|-------|-----|------------------|------|-----|---------------------------------|------------------|-----------|---------------|-------|--------|---------------|-----------------------|----------------------------------|---|---|--|---|--|---|
| 15696 | | 8/7/2023 | 2460 | W | GLEN CIR | | | EDWIN OCASIO | SHED | R3 | 08-01-417-001 | | | \$ 2,000 | \$ 25 | | | | | | | |
| | | 8/14/2023 | | | CITY OF SYCAMORE | | | STARTED BS&A PERMITTING PROGRAM | | | | | | | | | | | | | | |
| | | | | | | | | | | | | | | \$ 26,795,251 | \$ 18,263 | 26 | 0 | 0 | 0 | 2 | 0 | 0 |

Street Sweeping 2023

| Date | Operators | Sweeper # | Miles | Hours | Debris Collected | Fuel |
|------------|-----------|-----------|-------|-------|------------------|------|
| 1/3/2023 | GO | 60 | 21.8 | 5.5 | 12 | 16 |
| 1/11/2023 | GO | 60 | 18.7 | 6.3 | 8 | 17 |
| 1/18/2023 | GO | 60 | 28.9 | 6.7 | 15 | 18 |
| 4/3/2023 | GO | 60 | 16.6 | 4.7 | 6 | 24 |
| 4/4/2023 | GO | 60 | 28.3 | 7.3 | 6 | 17 |
| 4/6/2023 | GO | 60 | 21.9 | 6.8 | 6 | 17 |
| 4/12/2023 | GO | 60 | 15.8 | 6.6 | 4 | 14 |
| 4/14/2023 | GO | 60 | 21.7 | 7 | 6 | 14 |
| 4/21/2023 | GO | 60 | 23.8 | 7.3 | 6 | 22 |
| 5/12/2023 | GO | 60 | 24.1 | 6 | 6 | 20 |
| 6/6/2023 | TP | 60 | 60.1 | 9 | 7 | 27 |
| 6/7/2023 | TP | 60 | 52.5 | 9 | 8 | 32 |
| 6/8/2023 | TP | 60 | 41 | 6.4 | 5 | 20 |
| 7/24/2023 | TP | 60 | 49 | 9 | 6 | 28 |
| 7/25/2023 | TP | 60 | 47.1 | 8.7 | 6 | 25 |
| 7/26/2023 | TP | 60 | 25.1 | 4.7 | 3 | 17 |
| 8/4/2023 | TP | 60 | 35.3 | 7.1 | 4 | 22 |
| 9/12/2023 | JF | 60 | 35.3 | 7.1 | 6 | 19 |
| 9/13/2023 | JF | 60 | 55.8 | 6.5 | 6 | 20 |
| 9/15/2023 | JF | 60 | 35.5 | 7 | 6 | 25 |
| 9/18/2023 | JF | 60 | 30.2 | 4.8 | 4 | 14 |
| 9/20/2023 | JF | 60 | 46.4 | 5.7 | 6 | 22 |
| 9/21/2023 | JF | 60 | 41.2 | 6.6 | 6 | 24 |
| 9/22/2023 | JF | 60 | 42.4 | 6.8 | 6 | 26 |
| 9/25/2023 | JF | 60 | 31.7 | 6.9 | 6 | 21 |
| 9/28/2023 | JF | 60 | 35.3 | 6.9 | 8 | 24 |
| 9/29/2023 | JF | 60 | 43.3 | 7.2 | 10 | 24 |
| 10/2/2023 | JF | 60 | 45.2 | 6.6 | 8 | 21 |
| 10/3/2023 | JF | 60 | 41.5 | 6.3 | 8 | 22 |
| 10/9/2023 | JF | 60 | 56.2 | 7.8 | 8 | 25 |
| 10/11/2023 | JF | 60 | 44.2 | 6.1 | 8 | 27 |
| 10/16/2023 | JF | 60 | 21.4 | 3.5 | 6 | 12 |
| 10/17/2023 | JF | 60 | 47.6 | 6.7 | 8 | 25.5 |

| | | | | | | |
|------------|----|----|------|------|----|----|
| 10/18/2023 | JF | 60 | 48.4 | 6.4 | 8 | 24 |
| 10/19/2023 | JF | 60 | 42.9 | 6.1 | 8 | 22 |
| 10/23/2023 | JF | 60 | 39.8 | 10.3 | 10 | 21 |
| 10/24/2023 | JF | 60 | 42.6 | 2.7 | 10 | 21 |
| 10/30/2023 | GO | 60 | 32 | 7.4 | 25 | 24 |
| 10/31/2023 | GO | 60 | 8.3 | 2.3 | 9 | 8 |
| 11/1/2023 | GO | 60 | 7.6 | 3.5 | 9 | 8 |
| 2/28/2023 | GO | 61 | 16.7 | 6.2 | 8 | 12 |
| 4/3/2023 | KS | 61 | 27 | 7 | 9 | 18 |
| 4/4/2023 | KS | 61 | 26 | 6 | 9 | 14 |
| 4/5/2023 | KS | 61 | 34 | 7 | 9 | 21 |
| 4/6/2023 | KS | 61 | 26 | 6.75 | 9 | 18 |
| 4/10/2023 | SK | 61 | 19 | 4.7 | 7 | 24 |
| 4/11/2023 | KS | 61 | 51 | 12 | 16 | 28 |
| 4/28/2023 | SK | 61 | 10 | 4 | 9 | 21 |
| 5/5/2023 | SG | 61 | 33 | 6 | 6 | 12 |
| 5/19/2023 | SG | 61 | 20 | 4 | 6 | 6 |
| 5/26/2023 | TP | 61 | 40 | 7.5 | 9 | 16 |
| 6/2/2023 | SG | 61 | 32 | 7 | 9 | 10 |
| 6/6/2023 | SG | 61 | 32 | 7 | 18 | 6 |
| 6/7/2023 | SG | 61 | 53 | 9 | 18 | 12 |
| 6/8/2023 | SG | 61 | 22 | 5 | 15 | 5 |
| 6/16/2023 | SG | 61 | 17 | 4 | 6 | 9 |
| 6/23/2023 | SG | 61 | 27 | 7 | 6 | 10 |
| 6/30/2023 | SG | 61 | 31 | 7 | 9 | 10 |
| 7/7/2023 | SG | 61 | 20 | 5 | 3 | 9 |
| 7/14/2023 | SG | 61 | 22 | 5 | 6 | 8 |
| 7/21/2023 | SG | 61 | 41 | 8 | 6 | 8 |
| 7/24/2023 | SG | 61 | 57 | 9 | 9 | 2 |
| 7/25/2023 | SG | 61 | 41 | 9 | 9 | 0 |
| 7/26/2023 | SG | 61 | 28 | 4 | 3 | 0 |
| 7/30/2023 | SG | 61 | 20 | 3 | 3 | 0 |
| 7/31/2023 | SG | 61 | 20 | 3 | 3 | 12 |
| 8/18/2023 | SG | 61 | 30 | 6.5 | 6 | |
| 8/25/2023 | SG | 61 | 31 | 5 | 6 | 16 |
| 9/1/2023 | SG | 61 | 24 | 5 | 6 | |

| | | | | | | |
|------------|----|----|--------|--------|-----|--------|
| 9/8/2023 | SG | 61 | 25 | 5 | 3 | 16 |
| 10/6/2023 | SG | 61 | 24 | 6 | 12 | 16 |
| 10/27/2023 | SG | 61 | 20 | 4 | 18 | |
| 10/30/2023 | SG | 61 | 23 | 5 | 18 | |
| Totals | | | 2349.2 | 458.95 | 592 | 1168.5 |

2023 Storm Sewer Maintenance
Hours Worked

| Employee | Storm Sewer Cleaning | Storm Sewer Repair | TV Storm | CB/MH Repair | CB/MH Cleaning | Storm Total | Sweeping | Ditch Maintenance | Total |
|----------------|----------------------------|--------------------------|----------|-----------------|-------------------|----------------|----------|----------------------|-----------------|
| Fleetwood | 0.00 | 47.00 | 0.00 | 27.00 | 0.00 | 74.00 | 159.00 | 0.00 | 233.00 |
| Garrelts | 0.00 | 0.00 | 0.00 | 6.00 | 0.00 | 6.00 | 186.00 | 0.00 | 192.00 |
| Jennings | 0.00 | 8.00 | 0.00 | 0.00 | 0.00 | 8.00 | 0.00 | 0.00 | 8.00 |
| Kurth | 9.00 | 10.00 | 4.00 | 7.00 | 26.00 | 56.00 | 41.00 | 41.50 | 138.50 |
| Miller | 8.00 | 18.00 | 0.00 | 63.00 | 4.00 | 93.00 | 0.00 | 0.00 | 93.00 |
| Ormond G | 0.00 | 0.00 | 0.00 | 0.00 | 0.00 | 0.00 | 110.00 | 0.00 | 110.00 |
| Ormond V | 0.00 | 45.00 | 0.00 | 130.00 | 0.00 | 175.00 | 0.00 | 0.00 | 175.00 |
| Owens | 0.00 | 0.00 | 0.00 | 0.00 | 0.00 | 0.00 | 0.00 | 0.00 | 0.00 |
| Pumfrey | 2.00 | 12.00 | 0.00 | 151.00 | 0.00 | 165.00 | 82.00 | 0.00 | 247.00 |
| Sanderson | 2.00 | 4.00 | 0.00 | 4.00 | 0.00 | 10.00 | 48.00 | 58.00 | 116.00 |
| Schroeder | 0.00 | 6.00 | 2.00 | 122.00 | 7.00 | 137.00 | 0.00 | 0.00 | 137.00 |
| Siebrasse | 12.00 | 2.00 | 20.00 | 0.00 | 2.00 | 36.00 | 0.00 | 0.00 | 36.00 |
| | | | | | | | | | 0.00 |
| Division Total | 33.00 | 152.00 | 26.00 | 510.00 | 39.00 | 760.00 | 626.00 | 99.50 | 1,485.50 |